

# PASSPORT

## WINTER PARK

GUIDE TO SHOPPING, DINING, ARTS & MORE







**CLOCKWISE FROM ABOVE:** Axiom Collection, *Crooked Little Wisconsin*; Axiom Studio, *Valentine I & II*; Krista Berman, *Glitter Frenchie*, *Homage de Christo*, *Homage de Jackson Pollock*. All works available for purchase and on display at Axiom Gallery & Axiom Fine Art Consulting.



## AXIOM

FINE ART CONSULTING & GALLERY

Axiom Fine Art Gallery opened in March with an exhibition entitled “Certainty of the Tides,” which highlights local talent PJ Svejda and the prolific New York artist Madison Bloch. We hope that all attendees take away a feeling of inspiration after viewing these amazing works and visiting our new studio space. The show will run through June, and we plan to keep the space busy with different community outreach programs and partnerships with other cultural institutions. Axiom’s mission is to be culturally inclusive and provide opportunities for residents of and visitors to “The City Beautiful” to connect in engaging, educational and entertaining experiences.





# WELCOME TO VOL.11 OF PASSPORT WINTER PARK

“IF YOU BUILD IT, THEY WILL COME.” We built our first Home Design special section this issue with an amazing level of participation from Central Florida’s most esteemed builders, architects and designers, and it happens to coincide with the Parade of Homes next month. Each portrait in our series unveils the unique personalities behind the best in the business on and off the job, including our Designing Women, each with their own style that inspires color pops, furnishings, fabrics and more for your new interior design.

In our distinctive artistic approach, we introduce you to some of the most exquisite designs in chairs, from the *Fibonacci* and *Lathe IX* by renowned artist Sebastian Brajkovic to the *Lawless Chair* by acclaimed designer Evan Fay. Another big shout-out to Ginger Gregg Duggan for once again curating our cover artist,

and a special thank-you to Carpenters Workshop Gallery, which has showrooms in New York City, Paris and London.

Be sure to take a copy of **PASSPORT WINTER PARK** with you to shop, dine, design, explore and maybe even buy or build your next dream home!

**Denise Autorino**  
FOUNDER  
[Denise@PassportLuxuryGuides.com](mailto:Denise@PassportLuxuryGuides.com)



CONTRIBUTING  
PHOTOGRAPHER  
**Zach Stovall**



CONTRIBUTING  
PHOTOGRAPHER  
**Jon Whittle**



ACCOUNT  
EXECUTIVE  
**Nancy Rotatori**



DIRECTOR OF  
MARKETING  
**Lindsay Winter**

CREATIVE DIRECTION  
**Baseline Creative  
Group**

EDITOR/PRODUCTION  
MANAGER  
**Audrey St. Clair**



## WINTER PARK SCENIC BOAT TOUR

Discover Winter Park by water. Board a comfortable pontoon boat for a narrated tour of the city’s waterfront, cruising through scenic canals lush with local flora and fauna, and lakes graced by grand estates and historic landmarks such as Rollins College, Kraft Azalea Gardens and the Isle of Sicily. Boats depart each hour from 10 a.m. to 4 p.m. daily.



312 E Morse Blvd  
[scenicboattours.com](http://scenicboattours.com)  
407.644.4056





COVER ARTIST  
**SEBASTIAN  
 BRAJKOVIC**

Sebastian Brajkovic designed his Fibonacci chair — named after the Italian mathematician considered the Middle Ages’ most talented Western mathematician — with a keen interest in the discrepancy between art and design. Represented by Carpenters Workshop Gallery in New York City, London and Paris, Brajkovic studied at the Design Academy of Eindhoven in the Netherlands, where he developed a fascination for the point at which each medium begins to intersect with the other. In his work, he expresses a series of constant contradictions: between past and present, theory and practice, convention and innovation. His chairs involve woodcarving, bronze casting and embroidery as well as digital techniques. Brajkovic makes use of necessity as a tool in order to reveal the unnecessary in the collusion of design and art. [carpentersworkshopgallery.com](http://carpentersworkshopgallery.com)



*You can find a two-story home anywhere.  
 Here, you'll find a lifetime of stories.*

Enchanting family moments are part of everyday life at Golden Oak at Walt Disney World Resort. Right now, you can live in this luxurious private community with legendary Disney service featuring custom homes from \$2 million. Welcome home to where the magic is endless. **Golden Oak Realty | 407.939.5713 | [DisneyGoldenOak.com/Inspired](http://DisneyGoldenOak.com/Inspired)**

**GOLDEN OAK**  
 At Walt Disney World Resort

**AD** Obtain the Property Report required by Federal law and read it before signing anything. No Federal agency has judged the merits or value, if any, of this property. This does not constitute an offer to sell, or a solicitation to buy, real estate to Residents of any state or jurisdiction where prohibited by law, or where prior registration is required but has not yet been fulfilled. For NY Residents: THE COMPLETE OFFERING TERMS FOR THE SALE OF LOTS ARE IN THE CPS-12 APPLICATIONS AVAILABLE FROM OFFEROR, GOLDEN OAK DEVELOPMENT, LLC, FILE NOS. CP16-0107 (Phases 2 and 4) and CP16-0069 (Phase 3). For California Residents: WARNING: THE CALIFORNIA BUREAU OF REAL ESTATE HAS NOT INSPECTED, EXAMINED OR QUALIFIED THIS OFFERING. PA REGISTRATION No. OL001147. KY REGISTRATION No. R-176. OKLAHOMA OFFEREEES SHOULD OBTAIN AN OKLAHOMA PUBLIC OFFERING STATEMENT FROM THE DEVELOPER AND READ IT BEFORE SIGNING ANY DOCUMENTS. THE OKLAHOMA SECURITIES COMMISSION NEITHER RECOMMENDS THE PURCHASE OF THE PROPERTY NOR APPROVES THE MERITS OF THE OFFERING. Void where prohibited by law. Equal Housing Opportunity. Broker participation welcome. © Disney DGO\_18\_188174





Matina Williams, David and Janice Blumberg, Owners; Takai, Mascot

## BE ON PARK

FINE JEWELRY

Be On Park's philosophy is that jewelry should be loved, worn and enjoyed every day. Expecting the extraordinary, the discerning shopper will recognize exclusive collections such as Elizabeth Locke, JB Star, Penny Preville, Roberto Coin, John Hardy, Armenta, Todd Reed, Ippolita, Goshwara, Ray Griffiths, Jude Frances and Hermès watches. Throughout the store, you will find many one-of-a-kind, must-have treasures.



Elizabeth Locke Jewels



JB Star



152 Park Ave S  
beonpark.com  
thedefinitive.com  
407.644.1106





# THE ALFOND INN & HAMILTON'S KITCHEN

Named in honor of Hamilton Holt, president of Rollins College from 1925 to 1949, Hamilton's Kitchen embodies one man's pursuit of innovation, quality design and philanthropy. The iconic president was known for inviting too many people over for dinner gatherings, saying "If you can find a chair, you're welcome in my kitchen." Different styles of chairs pop up as homage to Holt throughout the restaurant, where Southern fare is served with a modern twist, where locally sourced ingredients fuse with the rustic, open-table charm of a bygone era. Located in The Alfond Inn, Hamilton's serves breakfast, lunch and dinner seven days a week.

  
THE ALFOND INN  
Rollins  
A WORK OF HEART

*hamilton's*  
KITCHEN

300 E New England Ave  
thealfondinn.com  
407.998.8089





**ABOVE:** Rosalyn Drexler, *The Misfits*, Acrylic and paper collage on canvas, 1961, 25 x 30 in., The Alford Collection of Contemporary Art, Cornell Fine Arts Museum, Rollins College. ©2017 Rosalyn Drexler/Artists Rights Society (ARS)

# CORNELL FINE ARTS MUSEUM

The Cornell Fine Arts Museum presents a brand-new installation of its permanent collection in *Ruptures and Remnants*, a thematic presentation juxtaposing 19th-century American and French paintings with 18th-century Indian and Chinese sculptures, 21st-century photographs and video, and ancient artifacts. No fewer than 15 of the 25 works displayed in the installation are recent acquisitions, on view for the very first time. Experiencing the permanent contemporary art collection continues, as always, at The Alford Inn at Rollins. Admission to the museum is free, courtesy of PNC Financial Services Group, and we are now open until 7 p.m. on Tuesdays.



**ABOVE:** Jean Charlot, *Great Builders II*, Lithograph on stone, 1930, 14 x 18 3/4 in., Gift of Charles and Julie Day Pinney. ©2018 The Jean Charlot Estate LLC/Member, Artists Rights Society (ARS), NY With permission.



Ena Heller, Ph.D.,  
Bruce A. Beal Director

**ROLLINS**  
CORNELL FINE ARTS  
MUSEUM

1000 Holt Ave  
(on Rollins campus)  
@cfamrollins  
407.646.2526





Marley Goldin,  
Assistant Manager;  
Milena Dumas,  
Store Manager

## SEE EYEWEAR

Voted “Best Eyewear” over 60 times in readers’ polls from coast to coast, SEE is a gouge-free environment for people who appreciate trendy luxury eyewear without the absurd price tag. SEE’s philosophy of producing incredibly small quantities (many times only one or two of a single frame in a specific color per city or per store) makes SEE the go-to locale for eyewear aficionados looking for the closest thing to custom frames.





SERVING  
WINTER PARK  
WITH PRIDE  
& GOOD  
FOOD SINCE  
1996

# HILLSTONE

**HILLSTONE**

215 S Orlando Ave  
hillstone.com  
407.740.4005

PASSPORT WINTER PARK







Anna Bond,  
Co-owner



558 W New England  
Ave, No 150  
(entrance on  
Pennsylvania Ave)  
407.622.7679  
@riflepapercop  
@riflepapercop



# RIFLE PAPER CO.

Rifle Paper Co. is an international stationery and lifestyle brand founded and owned by husband-and-wife team Anna and Nathan Bond. Their flagship store, based in Winter Park's Hannibal Square, offers an assortment of paper products — including greeting cards, gift wrap, prints, notepads, journals, calendars and more — most of which are printed locally and assembled by hand in their studio.







THE  
GLASS  
KNIFE.  
CAKES & CAFE

276 S Orlando Ave  
theglassknife.com  
407.500.CAKE

## THE GLASS KNIFE

The Glass Knife is Winter Park's go-to destination for decadent cakes, elegant desserts and specialty sweet treats. Come sit a spell. Any time of day, from kick-start to nightcap. Stop by for the perfect morning coffee or artisanal doughnut. Brunch till your heart's content. Enjoy your lunch break. Toast over dessert and champagne. Take home a cake for that special occasion. Something delicious awaits ... and we're here to share.



## SHOOOZ

The heart and soul of Shoooz is its unique presentation of modern comfort footwear mixed with good old-fashioned personal service. Our extensive hand-chosen collection spans the globe, from the funky styling of Fly London to the timeless elegance of Beautifeel. Shoooz invites you to stop in and experience the evolution of fine comfort footwear.

Shoooz

303 Park Ave N  
shoozonpark@yahoo.com  
407.647.0110







Chef Tony Krueger



## 310 PARK SOUTH BLU ON THE AVENUE

Established in 1999, 310 Park South makes you feel right at home with our cafe-style seating, great food, extensive wine list and full bar. Relax and enjoy our award-winning New American cuisine and our professional service with a personal touch. Inspired by locals and Orlando visitors, the Blu concept focuses on fresh seafood, sushi, prime steaks and classic cocktails. Dine alfresco or take a seat at the bar to enjoy a classic cocktail superbly mixed with fresh juices and specialty bitters. Enjoy fresh sushi rolls, smoked salmon fettucine or a slice of our delectable Italian cream cake.



**310**  
park south  
New American Cuisine

310 Park South  
407.647.7277

**blu**  
ON THE AVENUE

326 Park Ave South  
407.960.3778





**Jiha Moon: Double Welcome, Most Everyone's Mad Here (JUN 22 – AUG 12)**  
 Jiha Moon, *Most Everyone's Mad Here*, 2015, ink and acrylic on Hanji mounted on canvas

# THE MENNELLO MUSEUM OF AMERICAN ART

**Shannon Fitzgerald,**  
Executive Director



The Mennello Museum of American Art, owned and operated by the City of Orlando, is located on beautiful Lake Formosa in Loch Haven Cultural Park.



**When the Water Rises:**  
**Recent Paintings by**  
**Julie Heffernan**  
 (MAR 23 – JUN 10)  
 Julie Heffernan, *Standing My Ground*, 2016, oil on canvas. Courtesy of Catharine Clark Gallery.

Loch Haven Cultural Park  
 900 E Princeton St  
 407.246.4278



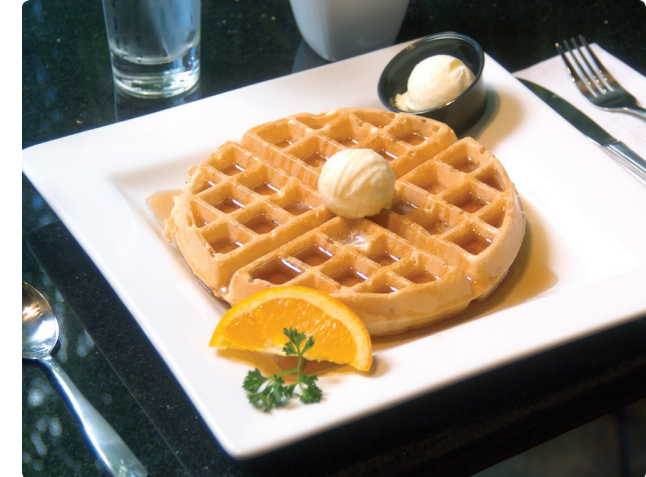
THE MENNELLO MUSEUM  
OF AMERICAN ART







Mindy, Maïse, Harry and Suzy



# PARK PLAZA HOTEL



The Park Plaza Hotel is an intimate boutique hotel built in 1922 and famous for its personal service and genuine hospitality. The hotel lobby oozes vintage elegance, and cozy, one-of-a-kind rooms offer views overlooking historic Park Avenue and the Central Park Rose Garden. Several guest rooms feature elegant balcony gardens where guests can enjoy a continental breakfast. The Lifetime Achievement in Historic Preservation Award was given to the family of the late proprietor John Spang, in memory of his work to help revitalize Park Avenue.

307 Park Ave S  
parkplazahotel.com  
407.647.1072



# KEKE'S BREAKFAST CAFE

It's like your hometown diner grew up and went to the city. Keke's is dedicated to providing an outstanding meal, where everything is handmade using the best ingredients available. Creating a memorable experience has been our goal from day one. We are committed to providing a breakfast where taste, quality and presentation are the foundation. From fluffy pancakes topped with fresh fruit to savory egg dishes and omelettes chock-full of hearty vegetables, there's something to suit everyone's cravings at Keke's.

345 W Fairbanks Ave  
kekes.com  
407.629.1400







# RIEKER SHOES

Rieker Shoes was founded in 1874 in Germany and is proud to open its first U.S. flagship retail boutique in beautiful Winter Park. Rieker, along with Remonte, provides style, quality and comfort right out of the box. We feature women's and men's shoes, boots, sandals, socks, and handbags for adults who want both fashion and comfort.



108 E Canton Ave  
407.539.0425



PASSPORT WINTER PARK





# FANNIE HILLMAN + ASSOCIATES

Founded in 1981 by Fannie Hillman, this independent, full-service residential real-estate agency has served the community with integrity and quality customer service for over 37 years. Awarded “Best Real Estate Agency” by the *Winter Park Observer* five years in a row, Fannie Hillman + Associates is a trusted neighbor whose staff of licensed brokers and sales associates are actively involved in the local community.



FROM LEFT:  
Sam Hillman;  
Fannie Hillman,  
Founder;  
Scott Hillman



205 W Fairbanks Ave  
fanniehillman.com  
407.644.1234



VERSATILITY, REINVENTED.  
An entirely new kind of crossover.



2018 XT5

STANDARD  
COLLECTION

ULTRA-LOW MILEAGE LEASES FOR WELL-QUALIFIED LESSEES

\$329 / 36 / \$3,979

PER MONTH<sup>1</sup>

MONTHS

DUE AT SIGNING  
AFTER ALL OFFERS

No security deposit required.  
Tax, title, license extra.  
Mileage charge of \$25 per  
mile over 30,000 miles.

<sup>1</sup> Payments are for a 2018 (XT5 Standard) with an MSRP of \$40,195.36 monthly payments total \$11,844. Option to purchase at lease end for an amount to be determined at lease signing. GM Financial must approve lease. Take delivery by 06/30/18. Mileage charge of \$.25/mile over 30,000 miles. Lessee pays for maintenance, excess wear and a disposition fee of \$595 or less at end of lease. Not available with some other offers.

STARLING CADILLAC

**LOCATION**

2800 S. Woodland Blvd.  
Deland, FL 32720

**SALES**

386.490-1614  
Mon-Fri 9am-8pm  
Sat 9am-8pm

**SERVICE**

386.490-8986  
Mon-Fri 7am-6pm  
Sat 9am-3pm





# HOME DESIGN

CHARLES CLAYTON CONSTRUCTION

Meet seven builders who are shaping our community. From modern marvels to traditional treasures, the renowned architects, builders and designers in the following Special Section will inspire your next dream home. Each of these visionaries brings a distinctive style to the drawing board along with professionalism and flawless attention to detail.



# CHARLES CLAYTON III

CHARLES CLAYTON CONSTRUCTION



## What projects are on the horizon?

We feel fortunate to have some great projects already on the books for 2018 and a good number of new projects planned for summer and fall 2018. 2019 looks very strong as well, with several repeat customers in Winter Park and coastal Volusia county.

**What are your clients' favorite building styles?** We are seeing a great number of Contemporaries, West Indies, and Coastal Contemporaries. We're also getting requests for the timeless Spanish Colonials again.

**What trends are you seeing in general, and even more specifically for Winter Park?** Some of our empty-nesters and semi-retired customers are looking to build homes with less square footage but with much greater focus on efficient space planning, outdoor living, green building and sustainability. Low maintenance and low operational costs are a must.

**What do you enjoy most about building homes?** The excitement and satisfaction of our customers as they see the home they have envisioned take shape from a dream, to paper, to reality, and turn out even better than ever imagined.



# PHIL KEAN

PHIL KEAN  
DESIGN GROUP

**What benefit does Phil Kean Design Group provide its clients by offering multiple services under one roof?** Our one-stop approach to architecture, interior design, kitchens, cabinetry, selections studio and construction makes the process of building a custom home seamless and holistic from start to finish.

**What inspired you to build the brownstones at Morse and Virginia?** I was inspired by the beauty of New York City's iconic brownstones. My goal was to incorporate my simplistic take on traditional design with this memorable and timeless architectural style. I feel that the project represents PKDG's uncompromising commitment to great design.

**What's the latest news at Phil Kean Design Group?** Our newest division, Phil Kean Kitchens, is revealing a luxury cabinetry line that I personally designed. We call it the Phil Kean Signature Collection.

AA26002050 / CRC1327855 / ID6290







# GREG HARDWICK

HARDWICK  
GENERAL  
CONTRACTING

**What style of homes do you build?** We build all types. With our experience in whole-house renovations and one-of-a-kind or “made- from-scratch” custom homes, we understand that in many ways the style and design of a home is up to the homeowner, while the building experience and quality are up to the builder. We don’t focus on one style, which enables us to specialize in all of them.

**How did you get started building homes?** Since I can remember, I have always wanted to be a builder. In college, I studied engineering and architecture and went on to achieve a master’s degree in engineering. My first job in 1992 was in the construction field for a Fortune 250 corporation, and in 2004, I decided to go out on my own to focus on a more personal approach to building. We are often hired for large, complex renovations and custom homes because of my engineering background.

**What do you like doing for fun?** Our family loves being together and therein lies the fun. We love the water and Florida and enjoy traveling together to our favorite places all over the state. We take advantage of many wonderful staycation spots throughout Central Florida on extended weekends but also love hanging out at home swimming, fishing, and keeping up with our two kids and two lively dogs.



# BRETT LUNDEQUAN

LUNDEV CUSTOM HOMES

**What projects do you have planned for 2018?** In 2018 we will be building a blend of custom and spec homes in Winter Park and New Smyrna Beach. We're very excited to be building for new and repeat clients this year and also bringing several new home projects to market. Check our website for details!

**What do you enjoy most about building homes?** I love the creative and transformational aspects of homebuilding. We are an "Infill" builder so we have the opportunity to improve every neighborhood we build in. We have a great team of people working at Lundev and really enjoy the relationships we develop with our clients.

**Do you have a favorite style you build?** We love many different styles, as long as they are timeless. We don't want to build a product that will feel dated in 10 or 20 years. We have been focusing on building homes with open informal floorplans and styles emulating the colonial West Indies.





A photograph of two men, Skip Gibson and Zoltan Kecskes, looking at architectural plans outdoors. Skip Gibson, on the left, is bald with a beard and is wearing a dark polo shirt. Zoltan Kecskes, on the right, has dark hair and is wearing a light blue polo shirt. They are both looking down at a large sheet of paper they are holding, which appears to be architectural plans. The background is a blurred outdoor setting with trees and sunlight filtering through the leaves. The title 'SKIP GIBSON & ZOLTAN KECSKES' is overlaid in large, bold, brown letters, with 'ZOLTAN HOMES' in smaller brown letters below it. The page number '44' is in the bottom left corner, and '45' is in the bottom right corner. The text 'PASSPORT WINTER PARK' is written vertically on the right edge of the page.

# SKIP GIBSON & ZOLTAN KECSKES

ZOLTAN HOMES

## **What projects can we expect from you in the near future?**

We have two projects in 2018 that we're very excited about. The first is a transitional design on Via Tuscany that ties in modern amenities with the warmth of home. The second, located on Forrest Road, features a unique transitional design on an oversize lot.

**Do you build specific types of homes?** We are passionate about design builds that you're not used to seeing in other custom homes. We personally

spend countless hours in unison with architectural engineers and designers on blending upscale design with functionality. Our projects typically favor a transitional design skewed to a slightly more modern, warm feel.

**What challenges do you face to stay competitive?** The challenge of making each home unique by using new materials, textures, features and technology. Quality and sustainability are of the utmost importance to us.



# DAVE CAHILL

DAVE CAHILL HOMES

**What projects do you have planned out for 2018 so far?** This is a strong year in Winter Park and Central Florida. We have a spec house on a waterfront lot and several lake lots coming soon. The renovation market continues to stay steady as clients love their homes and locations but want to update the style.

**Do you have a favorite style that you like to build?** I work closely with my architect and interior designer to build luxury homes that are timeless and pleasing to the eye.

**What do you enjoy most about building homes?** My greatest enjoyment is seeing the smiles on our clients' faces as their home comes to fruition. Customers want to be wowed the moment they enter the front door and again every time they turn the corner.







# KYLE KELLY & CARL JACOBS

ELEMENT  
HOME BUILDERS

**After building in the Windermere area for over 30 years, what brings you to Winter Park?** A great opportunity to build nine custom homes in a gated enclave. The Reserve at Interlachen is a one-of-a-kind community, so every home will have a distinctive design.

**Are you hands-on builders?** Yes, we sit down personally with each and every client, and we're on the job site every day making sure everything is done right.

**How does someone select a homebuilder?** The first step is meeting the person who is going to be physically working on your home and making sure you're in sync. Always look at their work in various stages of construction.

**What do you love about your business?** Watching the clients' excitement as their dreams come to life. There's nothing like that final walk-through.





Winter Park, Florida | [premiersir.com/id/O5557629](https://premiersir.com/id/O5557629) | 407.644.3295

The location, the style, the feeling you get when you walk through the door – every aspect of your home should be a reflection of who you are, where you’ve been and the life you aspire to live.

Your best life begins with a home that inspires you.

Call us today and let us find your inspiration.  
877.539.9865

North Orlando | 407.333.1900

Spruce Creek and The Beaches | 386.761.2172

Southeast Orlando | 407.480.5014

Southwest Orlando | 407.581.7888

Winter Park | 407.644.3295

Sotheby's International Realty® and the Sotheby's International Realty logo are registered service marks used with permission. Each office is independently owned and operated. Equal Housing Opportunity. Property information herein is derived from various sources including, but not limited to, county records and multiple listing services, and may include approximations. All information is deemed accurate.

Premier | **Sotheby's**  
INTERNATIONAL REALTY

[PremierSothebysRealty.com](https://PremierSothebysRealty.com)



# BEAU WILD

ARTIST

**What is abstract painting?**

Abstract painting is more about the emotion you feel than seeing specific details such as a landscape or portrait. It is about line, color, shape and texture.

**What is the inspiration behind your abstract paintings?** I have always been a people watcher. Intuitive in nature, both my non-objective and figurative abstract paintings express those behaviors.

**How do you select abstract art for the home?** It should produce a strong positive response. It makes you feel happy and excited or relaxed and content. Frequently the colors in the painting can be repeated in accent pieces of furniture and accessories unifying the space.

**What's the process for selecting a variety of your paintings?**

A private studio tour can be scheduled at your convenience. Here you can relax, preview and purchase a variety of paintings.







Kelly McFall, Showroom Manager

# ARTISAN

## KITCHEN AND BATH GALLERY

**What is artisan about Artisan Kitchen and Bath Gallery?** Believe it or not, plumbing fixtures are works of art! They set the mood in your kitchen and bathroom. They can be whimsical or stately. As a Kohler Premier showroom, we design your spaces to fit your personality. Crawl into one of our many tubs on display to give it a try!

**What makes this gallery different from other showrooms?** Our showroom features several working displays: six working air and whirlpool tubs, two steam units, sensor kitchen faucets, shower and rain heads, and body sprays. You can experience our products before purchasing.

**What do you enjoy most about working at Artisan?** The people. From our amazing staff to our clients, it's all about the people. There's nothing more rewarding than knowing you're part of making a client's dream become reality!





Cathy Sawruk,  
President/Broker, GRI

# SAWRUK REALTY

Generations rooted in Winter Park. Real Estate Professionals in  
Residential and Commercial Property, Investments and Consulting.

cathy@sawruk.com  
407.489.3921







Kitchen vignette by Thermador

# MONARK

PREMIUM APPLIANCE CO.

**WHAT EXPERIENCE TELLS US** — It's why builders count on us. It's why architects and designers consult us. And it's why remodelers turn to us first. Whether a luxury home developer or a highly discerning homeowner, every customer who enters a Monark showroom enjoys a distinctive, memorable experience. Offering an unrivaled selection of the finest home appliances, Monark meets the most exacting standards — the same standards we've held ourselves to from the very beginning.



500 Park Ave S  
monarkhome.com  
407.636.9725





# INTERIOR DESIGN

## 8 DESIGNING WOMEN

Great spaces don't happen by accident. Interior designers always look at a room based on the principles of design like scale, proportion and balance and on elements such as space, line, texture and light. The result is a jaw-dropping interior space, like those on the next 18 pages, designed by some of the best in the business.



Lathe IX, Sebastian Brajkovic; CarpentersWorkshopGallery.com



# ANNE RUE

## ANNE RUE INTERIORS

**Tell us about your design firm.** We are a full-service design firm with a team of 10 encompassing four areas of design: high-end residential, including new construction and major remodels, model merchandising, multi-family housing and senior housing. Every project we design is customized to match our clients' personality and to meet their needs functionally. We take on projects of all kinds, from mountain-side vacation homes to downtown high-rise condos.

**Do you work with builders?** We love partnering with builders on spec homes and client builds. For us, the support of a good builder is paramount, so we consider it our job to be one step ahead of any challenges that may arise.

**What do I need to create my dream home?** The perfect team for new design and/or remodel consists of an interior designer, an architect and an awesome builder. We love being the team's communication hub that makes everyone's process seamless and enjoyable.

**What do you enjoy most about designing?** ARI is extremely client-focused. We love helping a client create their vision and make it a reality. The end result of our work is someone's real home, so it is really fulfilling to bring someone into their new living space and see how happy they are.







# WOLFE-RIZOR INTERIORS



Abigail Rizor  
and Hattie  
Wolfe, Owners

Emphasizing interior spaces that are thoroughly researched, thoughtfully planned and flawlessly executed, Wolfe-Rizor Interiors is led by nationally recognized designers with over 24 years of experience. We specialize in new construction, remodeling and reimagining interior spaces. We create elegant, livable designs that strike the delicate balance between modern luxury and timeless beauty. Personal service is our trademark; excellence is our goal. Contact us to make your dream house a reality.

935 Orange Ave, Suite 100  
wolferizor.com  
407.647.5780



TOP LEFT & BOTTOM RIGHT: STEPHEN ALLEN PHOTOGRAPHY

PASSPORT WINTER PARK





# ANGELA NEEL INTERIORS

Angela began providing interior design services in the 1990s and has since established herself as one of Florida's premier interior designers. She is a graduate of the Ringling College of Art & Design and brings a truly artistic perspective to her projects. In 2000, she opened her design studio and furniture showroom in Winter Park, which offers the finest in custom upholstery and case goods, expertly selected and delivered with white-glove service. The studio and showroom offer a beautiful and unique setting in which Angela and her team provide an array of products and services for all types of residential interior design projects.



784 N Orange Ave, Suite 112  
angelaneel.com  
407.740.8989







# LAURI GODFREY INTERIOR DESIGN

Lauri Godfrey takes the reins of former Godfrey Design Consultants, which has over 40 years of experience serving Central Florida. Lauri continues to raise the industry bar with her consistent performance, leadership, and ability to innovate, as well as her commitment to design excellence and precise attention to detail. Clients include homeowners, homebuilders and architects throughout the U.S. and abroad. The firm's award-winning portfolio of residences, model homes, lobbies, and yachts is managed from concept to completion with exemplary service and creativity.

124 E Welbourne Ave, Suite 3  
godfreydesigninc.com  
407.539.2048  
239.267.8060

#IB00001310





# ORDERED CHAOS

EVAN FAY • LAWLESS CHAIR

Evan Fay is an American designer whose work takes ownership of truthful possessions, finds comfort in dystopia, and always embraces new expressions in design. His signature Lawless Chair is a celebration of irregularity within a system, pursuing a more artful form that responds to the chaotic landscape within our structured society. A punk aesthetic contextualizes a poetic moment to reflect an attitude toward our hectically evolving environments. Since 2016, Fay has exhibited work at Collective Design in New York City, SaloneSatellite in Milan and IDS in Toronto, and has been featured in publications including *Interior Design* magazine, *Azure* magazine, *Artravel* magazine, *Domus* and *Design Milk*. [evanfayfurniture.com](http://evanfayfurniture.com)







433 W New England Ave,  
Suite E  
designstudio15.com  
407.960.5943

# DESIGN STUDIO 15

WE TURN IDEAS INTO WORKS OF ART

At Design Studio 15, we utilize a team approach to every project whether commercial or residential. Each team member contributes their expertise, passion and creativity to produce a functional and aesthetically pleasing design that meets our clients' expectations and needs. We stay current on the latest trends in pop culture, fashion, music, jewelry and color palettes and incorporate these trends into our designs all while maintaining a balance with classic timeless design. We engage our clients to make the design process fun and participative, inspiring and creative and, above all, a fully collaborative effort with no surprises.





# SUZANNE NICHOLS

## DESIGN GROUP



Suzanne Nichols Design Group is a full-service interior design firm and showroom in Winter Park. Suzanne — an award-winning NCIDQ certified interior designer — and her team design luxury residential and commercial projects located nationally and internationally. Our mission is to transform and create beautiful environments while exceeding our clients' expectations. We specialize in creating extraordinary design and give each client a one-of-a-kind design experience.



SUZANNE NICHOLS  
Design Group

631 W Fairbanks Ave, Unit A  
suzannenichols.com  
407.678.9651

PASSPORT WINTER PARK





# CAMERON'S DESIGN

## HUNTER DOUGLAS SHOWROOM IN BALDWIN PARK

Whether your taste is modern or traditional, we can offer you a timeless look. Hunter Douglas features the most innovative PowerView technology. Schedule your consultation to view the latest products, including Alustra fabrics.



Betty Cameron, Owner



1467 Lake Baldwin Lane  
orlandowindowtreatments.com  
407.893.4999

HunterDouglas 

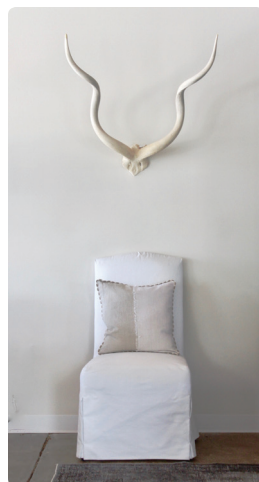
PASSPORT WINTER PARK





# CANVAS INTERIORS

Born from love of simple, clean lines and a laid-back California style, Jesper and Catherine Knudsen set out to create a lifestyle brand that is not only beautiful but also family-friendly. The design duo opened a third store location in January 2015 in Winter Park, where an industrial loft-like setting is layered with rich warm woods and textures. We believe if you start with a simple canvas you can create a life of style.



784 N Orange Ave  
 canvasinteriors.com  
 321.972.9173

canvas  
 INTERIORS





# WENDY WILLIAMS CRUMIT

INTEGRITY • KNOWLEDGE • EXPERIENCE

Wendy Williams Crumit is a dedicated real estate professional who has specialized in Winter Park, Maitland and the surrounding areas for more than 18 years. She has earned top accolades in her industry and ranks as one of Fannie Hillman's Top Producers. She understands how important buying or selling is to her customers and ensures each one has the best experience possible.



205 W Fairbanks Ave  
wendy@fanniehillman.com  
321.356.8590

*Artisan*  
KITCHEN AND BATH GALLERY

THE BOLD LOOK  
OF **KOHLER**

784 N Orange Ave  
artisankbgallery.com  
407.636.6716

Located on Designer's Row in the heart of enchanting Winter Park, our retail showroom features the best in kitchen and bath design. As a Kohler premier showroom, we offer the latest designs for both new construction and remodels while providing superior customer service. Artisan Kitchen and Bath features more working bath systems than any other local retailer, and our professional, experienced staff is ready to help you turn your kitchen and bath dreams into reality.



## ARTISAN KITCHEN AND BATH GALLERY







## DR. SCOTT ROTATORI

A NATURAL CHOICE



Meet Dr. Scott Rotatori, M.D., voted Best Cosmetic and Plastic Surgeon in Orlando. Dr. Rotatori, along with licensed esthetician Ashley Adams, and our entire professional team will help you turn back time without advanced surgery. We use a host of different fillers and injectables, as well as Cutera Laser Skin Treatments, to make you look and feel younger and more beautiful. Skin care is our specialty, and we offer the latest technology to provide amazing results in a short period of time.

800 W Morse Blvd #5  
scottrotatori.com  
407.628.5476

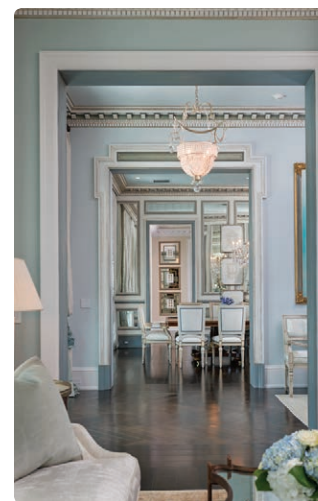


Charles Clayton Construction, Central Florida's premier custom homebuilder, specializes in one-of-a-kind new construction and home remodels while remaining committed to quality craftsmanship, community and family. A Winter Park resident, Charlie Clayton III and his family have been building homes throughout Central Florida for nearly 70 years. Please call us at 407.628.3334 today to schedule a complimentary review of your upcoming project.



## CHARLES CLAYTON

CONSTRUCTION



  
CHARLES CLAYTON  
CONSTRUCTION

2250 Lee Rd, Suite 120  
charlesclayton.com  
407.628.3334



# LUXURY REAL ESTATE

ANDREA SIDER, BROKER ASSOCIATE

Andrea is committed to providing professional real estate services with a personal touch that exceeds all expectations. Her best advertisement comes from client testimonials: "You were an advocate for your client 100% of the time." Andrea is a member of an exclusive and elite group of real estate consultants raising the bar for outstanding service and professional expertise in the luxury home market.



**kw HERITAGE**  
KELLERWILLIAMS. REALTY  
ourluxuryestate@gmail.com

**WINTER PARK**  
147 W Lyman Ave  
407.697.4204

**ALTAMONTE SPRINGS**  
1150 Douglas Ave, Suite 2020  
407.697.4204

KELLERWILLIAMS  
**Luxury**  
INTERNATIONAL

**CLHMS**  
MILLION DOLLAR  
GUILD



## ORCHID THAI

A Park Avenue mainstay, family-owned-and-operated Orchid Thai serves fresh, flavorful and traditional Thai dishes. The ambience is cozy and you will feel relaxed and comfortable upon arrival. Sue Manatad, chef and owner, takes great pride in creating exotic dishes for the seasoned and novice palate, including Mieng Kum lettuce wraps, Bangkok salmon and pad Thai. Open seven days a week for lunch and dinner; gluten-free and vegan options.



305 Park Ave N  
orchidthaiwinterpark.com  
407.331.1400







Enjoy specialty stores,  
delicious restaurants,  
luxurious salons,  
the latest movies,  
convenient grocery store,  
lifestyle apartment homes,  
or sit by a sparkling fountain  
and watch the world go by.  
It's a one-of-a-kind destination.



*shop, dine, unwind & live in style!*



ShopWinterParkVillage.net



407.571.2700



FROM TOP LEFT: UNEEK IMAGE (2); COURTESY TIMBERLAKE CABINETRY, COURTESY LAKE NONA REALTY



# PHIL KEAN DESIGN GROUP

2017 BEST CUSTOM HOME BUILDER  
— ORLANDO BUSINESS JOURNAL

Dedicated to service and excellence, our mission is to provide the complete solution for award-winning design and construction of architecturally distinctive spaces integrating the finest quality of products and services. Whether your tastes are modern or traditional, Phil Kean Design Group specializes in creating one-of-a-kind, luxury residences with extraordinary attention to design detail, sustainable construction, and seamless transitions of indoor and outdoor spaces.

**Architecture • Construction • Interior Design  
Kitchen & Bath • Real Estate**



Phil Kean

912 W Fairbanks Ave  
philkeandesigns.com  
407.599.3922



Architecture by Phil Kean, LLC AA26002050  
Phil Kean Designs, Inc. CRC1327855; PKD Studio, LLC ID6290





Steven Luppert, Realtor; Brian Rotenberger, Owner/Broker



## REEL FISH

### COASTAL KITCHEN + BAR

## ROTENBERGER

### LAND & REAL ESTATE

As a 35-year local resident with over 20 years of experience in the housing, construction and real estate industries, owner and broker Brian Rotenberger has built a successful business founded on the relentless pursuits of providing high-quality, honest and efficient services. “Our team takes a genuine interest in the needs and lives of those we work with,” says Rotenberger, “and it is our firm belief to always place service ahead of sales.”

**ROTENBERGER**  
LAND AND REAL ESTATE  
rotenbergerland.com  
407.948.8478



Brandy Ford, General Manager; Fred Thimm, Owner; Allen Roelofs, Chef

Reel Fish Coastal Kitchen + Bar is a contemporary take on the classic fish camp, serving fresh Florida seafood prepared in a Southern style and served in a casual, family-friendly atmosphere. Located almost directly between Florida’s Atlantic and Gulf coasts, we’re in the perfect place to receive daily shipments from the top sustainable seafood purveyors. Serving lunch and dinner and weekend brunch. Closed Mondays.

1234 N Orange Ave  
reelfishcoastal.com  
407.543.3474





# WOMEN IN BUSINESS

## AVA DOPPELT • ATTORNEY AT LAW

Ava Doppelt, a board-certified attorney specializing in intellectual property law, is a big believer in new businesses giving serious thought to their brand. “Your brand can be your most valuable business asset,” says Doppelt. For instance, the Apple brand is currently the most valuable in the world, assessed last year at \$170 billion. Doppelt shares a few branding tips:

1. Choose a distinctive logo that affords you a matching domain name;
2. File trademark applications in the U.S. Patent & Trademark Office;
3. Use your marks in a consistent style. If you allow others to use them, ensure that the goods or services they advertise under your mark meet your standards. Remember that your name represents the goodwill of your business, and consumers look for brands they recognize and trust. [allendyer.com](http://allendyer.com)



FROM LEFT TO RIGHT: Vincent Scarlatos, Karen Czachowski, Noelle LeBlanc, Brian Craib, Anke Read-Segerius, Suzy Masson Barnes and Erin Gwinn

# OLDE TOWN BROKERS

Through an understanding of the community, its citizens and values, Olde Town Brokers remains the number one choice for real estate services in the Central Florida area. Founded in 1994 by Phil Rampy, the company has succeeded in providing its clientele with outstanding service measured by superior performance. Recognized as one of the only true boutique brokerages in Central Florida, Olde Town Brokers provides a full range of real estate services including sales, leasing and property management of single-family homes, condominiums and investment properties, as well as commercial sales and leasing. The company has nearly 75 sales associates in two high-profile locations: Thornton Park and Winter Park. Let our years of experience and expertise work for you so that you can **GET BUSY LIVING!**



Phil Rampy, Broker/Owner, and Maria Rampy Blanchard, General Manager



206 Park Ave S, Suite B  
oldetownbrokers.com  
407.622.7878



# ORLANDO MUSEUM OF ART

Indulge your curiosity at the Orlando Museum of Art.  
Only minutes from Park Avenue and Downtown Orlando.

## EXHIBITIONS

**State of Excellence:  
Treasures from Florida  
Private Collections**  
JAN 26 - APR 29, 2018

**Enduring Beauty:  
Seminole Art  
and Culture**  
MAR 22 - JUL 8, 2018

**2018 Florida Prize in  
Contemporary Art**  
JUNE 1 - AUG 26, 2018

**Opening Preview Party**  
JUNE 1, 2018



**RIGHT:** *Micanopy*, 1826, colored lithograph 8 x 5 in. Printed, colored and published by J.T. Bowne, of Philadelphia. Collection of I.S.K. Reeves V & Sara W. Reeves. Photography by Beverly Brosius.



Frans Francken the Younger, *The Worship of the Golden Calf*, n.d. oil on copper, 26 1/2 x 33 1/4 in. Gilbert Collection. Image courtesy of Ray Bassett.



Florida Prize in Contemporary Art Opening Preview Party, 2017. Photography by Nicholas Travaglini.



Sergio Vega, Installation shot of *The Lost Steps (after Steichen, Oiticica, Derrida)*, 2015, inkjet archival prints on canvas and adhesive vinyl, mounted on sintra and plywood panels, Variable dimensions. Courtesy of the artist. © Sergio Vega. Image courtesy of Raymond Martinot.

2416 N Mills Ave  
omart.org  
407.896.4231

ORLANDO MUSEUM OF ART





**NASRALLAH**  
ARCHITECTURAL GROUP, INC.  
3920 Edgewater Dr, #101  
Orlando  
nasrallah.com  
407.647.0938  
  
#AA26001471



# NASRALLAH

## ARCHITECTURAL GROUP, INC.

For 36 years, Nasrallah Architectural Group has been designing award-winning architecture. By striving to produce designs that possess propriety, timelessness and beauty, each project boasts a commitment to design excellence. Through a disciplined approach, the design team at Nasrallah takes into account everything from the project's program to the physical and cultural setting of the building. By transcending form and function, each unique project creates a lasting space in the world.



# LUNDEV

## CUSTOM HOMES • COMMERCIAL

Experienced in every aspect of the development process, from site selection and acquisition through construction and warranty, LunDev possesses unique knowledge to effectively envision and create your new custom home or commercial space. Founder Brett Lundequam is adept at meeting clients' budgets and project goals without sacrificing quality or delivery. As residents of Winter Park, the LunDev team values their customers as neighbors but also friends.



1201 Louisiana Ave, Suite C  
lundev.com  
407.622.1600  
f lundevcustomhomes  
i lundevhomes



Brett  
Lundequam,  
Founder







## LOVE WHERE YOU LIVE

CINDY KUYKENDALL

As a Winter Park Wildcat and Central Florida native, Cindy knows Orlando. With over 15 years of real estate experience, Cindy consistently ranks as a top producer because of clients' trust in her intimate understanding of the area's neighborhoods and schools. Whether you're looking for your dream home or selling your current property, Cindy delivers the dedication, integrity and local know-how you need to *love where you live*.



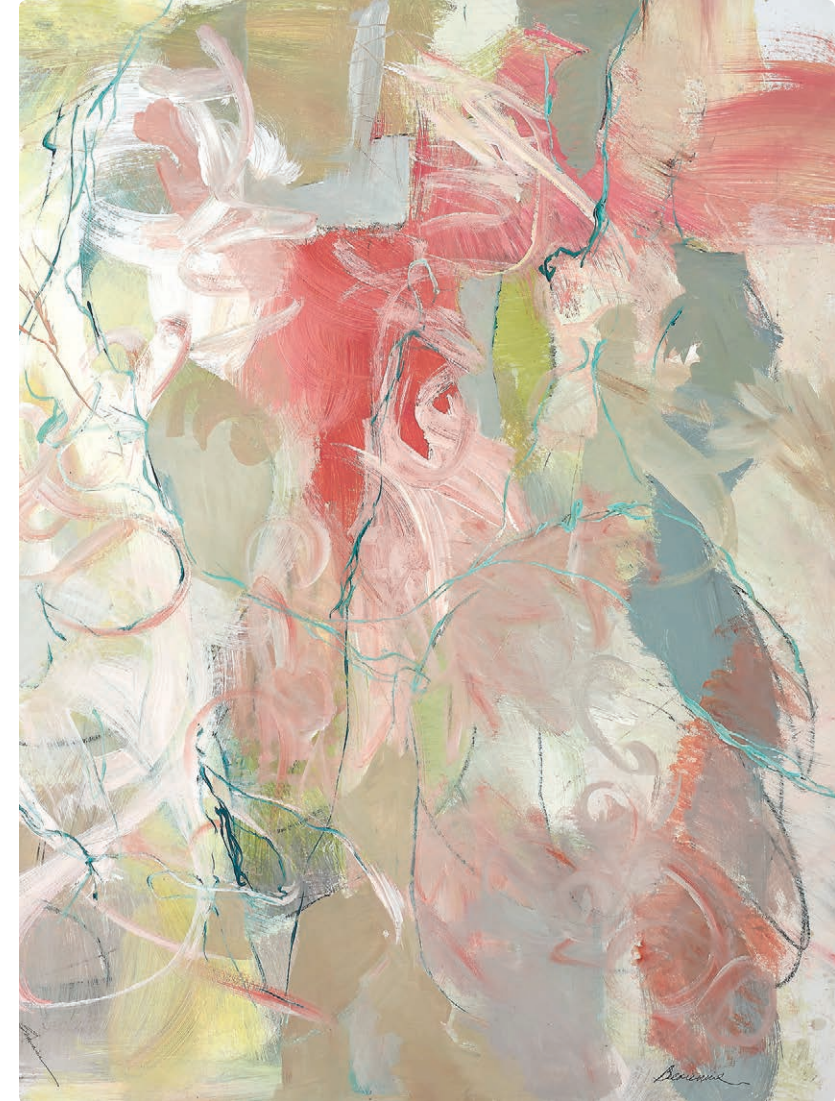
205 W Fairbanks Ave  
cindy@fanniehillman.com  
407.718.3235



## BEAU WILD

HIDDEN BAY STUDIO

A native Floridian, Beau Wild paints daily in her studio along Rose Bay in Port Orange, focusing on abstract and figurative painting. For 30 years she has explored the bond between painter and subject, the subject alone or in groups and her relationship with herself. Questions about people's behavior and what motivates their actions and reactions propel Wild's creativity, whether it's an elderly woman's feeling of isolation, an outsider's anxiety when courting a new friend or the unforgotten lives of those who have passed. Even though Wild always assumes the objective position of the observer, these glimpses open a small window through which she evaluates her own life through painting.



5960 Riverside Dr  
Port Orange  
beauwild.com  
386.322.4249



# WE'VE GOT FUN DOWN TO A SCIENCE!

Exploration and Discovery for All Ages



Enjoy interactive exhibits, live science shows, 3D and giant-screen educational films, hands-on workshops, and so much more!

[www.osc.org](http://www.osc.org)

FROM TOP LEFT: STEPHEN ALLEN; MATUZAK PHOTOGRAPHY (2); STEPHEN ALLEN



## HARDWICK GENERAL CONTRACTING

Family owned and operated, Hardwick GC is a nationally recognized award-winning luxury custom home and renovation company. Its mission is to provide an extraordinary personalized building experience by delivering exceptional home quality, unparalleled customer service, and personal involvement throughout design and construction. Greg Hardwick and family are proud to live in the Maitland/Winter Park area. Recently, Greg was honored as the Master Custom Builder Council's Builder of the Year and as the Greater Orlando Builders Association's Remodeler of the Year.



Greg and Donna  
Hardwick, Owners

[hardwickgc.com](http://hardwickgc.com)  
407.702.6531  
License: CGC1507856





ONE OF A KIND COMMUNITY  
COMING SOON TO WINTER PARK



Nestled within Winter Park and neighboring Interlachen Country Club, The Reserve at Interlachen, a gated one of a kind community, offers idyllic views and serene privacy. Situated on only nine unique home sites each custom home offers an effortless lifestyle.

Contact Premier Realty Partners for more information 321-236-5118  
RESERVEWP.COM

Headquartered in Downtown Winter Park, Anthros Inc. is a human resources firm with local, national and international clients. Our clients are leaders in their industries. Chef-owners nominated for James Beard Awards. Law firms known for winning landmark cases. Health-care facilities that set the standard for care while operating across multiple states. Our vision is to empower our clients to become the best in their industry and build a legacy by serving as their long-term partner in human resources.



Anurag Dandiya, Founder

**ANTHROS INC.**



400 W Morse Blvd, #203  
anthrosinc.com  
407.502.0200





**Z**  
ZOLTAN  
HOMES  
www.zoltan.homes  
407.741.3081



## ZOLTAN HOMES

DESIGNED AND BUILT AS IF THEY WERE OUR OWN



**PREVIEW** our Parade of Homes, May 5-6 and May 12-13, 431 Balmoral Road, Winter Park

Unique. Progressive. Exclusive. Zoltan Homes applies these elements to every project. We specialize in building custom homes designed with the highest standards and materials, with superior attention to detail. Our mission is to build timeless luxury homes, always keeping sustainability and future usability in mind. Contact us to learn more about our available homes and to schedule a private review of your future custom home plans.

Skip Gibson and Zoltan Kecskes, Founders



595 W Fairbanks Ave  
swineandsons.com  
f swineandsons  
@swineandsons  
407.636.7601

## SWINE & SONS

Swine & Sons is a chef-driven sandwich shop, caterer and private event space located on the corner of Fairbanks and Pennsylvania in Winter Park. We specialize in sandwiches featuring our made-from-scratch meats, off-site catering, and private events for groups up to 40 in our unique and intimate space.





# DREAM HOMES

GREG VAZZANA  
& ROSA BACHRACH

Dream homes don't grow on trees. They are built amongst them in Winter Park. Whether the home is traditional, transitional, modern, luxurious or a fixer-upper, we can make your dream reality. Our combined 40 years of experience will give you the peace of mind on your next real estate transaction.



BERKSHIRE HATHAWAY  
HomeServices  
Florida Realty

LUXURY  
COLLECTION

515 W Morse Blvd  
ilovewinterpark.com  
321.947.7218  
407.721.7622



Lamont and Lynda Garber

# GARBER CAPITAL

COMMITMENT TO THE COMMUNITY  
THROUGH SOCIAL INTERACTION  
AND GREEN DEVELOPMENT





# DAVE CAHILL HOMES



Our slogan is "Details make the difference," and adherence to that principle is immediately apparent in every home we build. Even before conducting initial client meetings, Dave has already begun construction plans for customers' dream homes. He presents several model layouts from a broad range of styles, including French European, Santa Barbara and traditional, with a process that begins with a team of talented designers with years of experience and a passion for what they do.

925 S Denning Dr, Suite 4  
 davecahillcompany.com  
 407.309.9009



PASSPORT WINTER PA

# THE PARTRIDGE TREE GIFT SHOP

For over 16 years on Park Avenue, The Partridge Tree Gift Shop is the perfect place to find a great gift for a friend, family member or yourself! We carry a large selection of greeting cards for any occasion.



The Partridge Tree Gift Shop  
 316 Park Ave S  
 407.645.4788



Edward Bosch, Manager;  
 JoAnne McMahon, Owner







**KELLY PRICE**  
& COMPANY

243 W Park Ave  
kellypriceand  
company.com  
407.415.0338

## THE ART OF REAL ESTATE

LOU SUPOWITZ

Living in Winter Park for over 25 years, Lou Supowitz has a distinguished record of public service to Central Florida through his involvement with philanthropic foundations and commitment to arts and culture. Orlando Mayor Glenda Hood honored him as the recipient of the Vision Award for Innovation. Lou's experience on both sides of real estate transactions makes the process seamless for all parties, while his unwavering work ethic and previous career in television and marketing set him apart.



## ANNE RUE INTERIORS

Anne Rue Interiors is Central Florida's premier luxury interior design firm. Led by principal designer Anne Rue from HGTV's *Design Star* and Travel Channel's *Hotel Impossible*, ARI was named one of the top 3 interior design firms in Orlando. The full-service design firm specializes in luxury residential, model merchandising, multi-family housing and senior living. Anne Rue Interiors creates beautiful and functional spaces from coast to coast by building and maintaining strong partnerships with industry experts, builders and architects to exceed client expectations with every detail.



  
anne rue  
INTERIORS

4260 Church Street,  
#1300, Sanford  
annerue.com  
407.322.6742

PASSPORT WINTER PARK



# OLIVER'S CLASSIC CARS

Located in the heart of Winter Park, our 9,000-square-foot showroom features \$1 million worth of classic cars and memorabilia. Our event venue is perfect for corporate events, cocktail parties, client receptions and charity galas, and our classic cars are available to rent. When walking through our showroom, you're greeted by wall-mounted NASCAR race cars, a 40-foot bar with teak columns dating to the 1800s, comfy leather couches, and an outdoor garden terrace space. One step inside, and you'll be ready to start planning your event with our experienced staff.

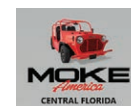


1116 Solana Ave  
oliversclassiccars.com  
407.708.9733



Maria Vimmerstedt, Local Dealer

# CENTRAL FLORIDA MOKE



1116 Solana Ave  
centralfloridamoke.com  
407.636.5104

What is a Moke? What began as a military invention for the British army in the late 1950s became a cultural touch point with celebrity fans like Brigitte Bardot and The Beach Boys. Our electric car — a symbol of fun in the sun — is versatile, carbon-free and efficient. The upgraded version for the 21st century has more leg room, expanded trunk space, a kickin' sound system and lots of sex appeal. At 2,300 pounds, it is the heaviest Moke ever built. The Moke stays true to its roots while keeping its headlights on the future, ushering in a whole new generation of drivers.



# THE MAYFLOWER RETIREMENT COMMUNITY

*Because there's  
nothing "old" about  
**HAVING FUN  
WITH YOUR BFFs***



Gracious hospitality. Fine dining. Elegant amenities. And a community of friendly, fascinating people to share good times with.

This is The Mayflower. And living here is like being on a permanent vacation at a luxury retirement resort – with one very big perk: the guarantee of onsite quality long-term care.

Call today to learn more. And bring a friend!



**THE MAYFLOWER**

Winter Park's Distinctive Retirement Community



1620 MAYFLOWER COURT | WINTER PARK, FL 32792  
407.672.1620 | [THEMAYFLOWER.COM](http://THEMAYFLOWER.COM)

88141 PRAD PWP 2/2018





Julien and Natalie  
Emmanuel, Owners

## KILWINS CHOCOLATE FUDGE ICE CREAM



Since 1947, Kilwins® has earned a reputation for its quality products and excellent service. Using only the finest and freshest ingredients, our products are a pleasure to sell, and we delight in seeing our customers enjoy them. Enjoy the experience of watching our Hand-Crafted Fudge being paddled to perfection. Kilwins® Chocolates, Fudge, and Ice Cream are the best confections you will ever enjoy!

122 Park Ave N  
kilwins.com  
407.622.6292



## THE WINTER PARK PLAYHOUSE



**The Winter Park  
playhouse**

711 N Orange Ave, #C  
winterparkplayhouse.org  
407.645.0145



Just blocks from Park Avenue, the Winter Park Playhouse is a professional musical theater dedicated to producing Broadway and Off-Broadway musicals as well as premier cabarets. The intimacy of the 123-seat theater engages patrons with an up-close-and-personal experience. The Playhouse maintains the highest standard of artistic integrity and is proudly affiliated with the Actors' Equity Association and the National Alliance for Musical Theatre.

# PARK MAITLAND SCHOOL

WITH WONDER-FILLED LEARNING,  
ACHIEVEMENT RISES TO THE LEVEL OF AWE

When learning begins in wonder, students are inspired and awestruck, not stressed and pressured. They excel beyond ordinary and ahead of grade-level expectations as a natural expression of curiosity and confidence. Park Maitland students become out-of-the-box thinkers, innovative leaders, compassionate citizens and lifelong learners. Schedule a tour today and discover just how awesome learning can be.



**PARK MAITLAND  
SCHOOL**

*Excellence Begins in Wonder*

1450 S Orlando Ave  
parkmaitland.org  
407.647.3038

PASSPORT WINTER PARK





# Millenia Café

## Featuring a Drive-Thru!



Together,  
we have donated  
**\$125 Million**  
to our local communities.

THANK YOU  
CUSTOMERS FOR  
**20**  
YEARS

4054 Conroy Road, Orlando, Florida 32839  
Phone: (407) 248-0811 • [www.PaneraBread.com](http://www.PaneraBread.com)

- Apparel**
- 14 Arabella 407-636-8343
  - 12 Bebe's/Liz's Fashion Experience 407-628-1680
  - 2 Charyll 407-455-1983
  - 9 Cottonways 321-203-4733
  - 6 Current 407-628-1087
  - 1 Evelyn and Arthur 407-740-0030
  - 13 Forena Boutique 407-790-4987
  - 15 The Impeccable Pig 407-636-4043
  - 2 J. McLaughlin 407-960-3965
  - 7 John Craig Clothier 407-629-7944
  - 6 Lilly Pulitzer 407-539-2324
  - 19 Lucky Brand Jeans 407-628-1222
  - 4 Maestro Cucina Napoletana 407-335-4548
  - 4 Max and Marley 407-636-6204
  - 16 Siegel's Winter Park 407-645-3100
  - 4 Synergy 407-647-7241
  - TADotstyle 321-209-1096
  - 12 The Grove 407-740-0022
  - 20 tugboat and the bird 407-647-5437
  - 17 Tunl 407-628-1609
- Dining**
- 1 310 Park South 407-647-7277
  - 19 Barnie's Coffee/Kitchen 407-629-0042
  - 19 BolBras! Churrascaria 407-636-7366
  - 2 Blu on the Avenue 407-960-3778
  - 2 Bosphorus Turkish Cuisine 407-644-8609
  - 3 Cocina 214 407-790-7997
  - 3 Garp and Fuss 585-766-9886
  - 6 Laurel Latin Cuisine 407-671-4424
  - 1 Luma on Park 407-599-4111
  - 5 Maestro Cucina Napoletana 407-335-4548
  - mon petit chéri cafe 407-647-7520
  - 12 New General 321-972-2819
  - 4 Panera Bread 407-645-3939
  - 2 Pannullo's Italian Restaurant 407-629-7270
  - 1 Park Avenue Smoothie Cafe 407-335-4914
  - 6 The Parkview 407-381-4432
  - 7 Power House Cafe 407-636-3616
  - 2 Prato 407-262-0050
  - 4 Rome's Flavours 407-951-8039
  - 7 UMI Japanese Restaurant 407-960-3993
  - 3 The Wine Room on Park Ave 407-696-9463
- Financial Services**
- 5 Bank of America 407-646-3600
  - 21 F4 Wealth Advisors 407-960-4769
  - 28 Florida Community Bank 407-622-5000
  - 5 The Kozlowski CPA Firm LLC 407-381-4432
  - 8 Moss, Krusick and Associates 407-644-5811
- Health & Beauty**
- 23 Advanced Park Dental 407-628-0200
  - 9 Clean Beauty Bar 407-960-3783
  - 12 Eyes & Optics 407-644-5156
  - 6 Kendall & Kendall, Hair Color Studio 407-629-2299
  - 17 One Aesthetics 407-720-4242
  - 15 See Eyewear 407-599-5455
- Hotels**
- 8 The Alford Inn 407-998-8090
  - 9 Park Plaza Hotel 407-647-1072
- Interior Design**
- 3 California Closets 800-633-0213
  - 11 Ethan Allen 407-622-1987
  - 10 Monark Premium Appliance 407-636-9725
  - 9 The Shade Store 321-422-1010
- Jewelry**
- 11 Alex and Ani 321-422-0841
  - 5 Be On Park 407-644-1106
  - 2 International Diamond Center 407-629-5531
  - 15 Jewelers on the Park 407-622-0222
  - 3 Orlando Watch Company 407-975-9137
  - 3 Reynolds & Co. Jewelers 407-645-2278
- Law Firms**
- 8 Small Business Counsel 407-621-4200
- Museums & Cultural Attractions**
- 5 Albin Polasek Museum & Sculpture Gardens 407-647-6294
  - 2 Bach Festival Society of Winter Park 407-646-2182
  - 2 Casa Feliz 407-628-8200
  - 3 Cornell Fine Arts Museum 407-646-2526
  - 1 Morse Museum of American Art 407-645-5311
  - 3 Scenic Boat Tour 407-644-4056
  - The Winter Park Playhouse 407-645-0145
  - 10 Winter Park History Museum 407-647-2330
- Real Estate Services**
- 7 Beyond Commercial 407-641-2221
  - 5 Brandywine Square 407-657-5555
  - Fannie Hillman + Associates 407-644-1234
  - Great American Land Management, Inc. 407-645-4131
  - 24 Keewin Real Property Company 407-645-4400
  - 10 Kelly Price & Company 407-645-4321
  - 9 Leading Edge Title 407-636-9866
  - 11 Olde Town Brokers 407-622-7878
  - 5 Premier Sotheby's International Realty 407-644-3295
  - 8 Re/Max Town Centre 407-367-2000
  - 11 Winter Park Land Company 407-644-2900
  - 3 Winter Park Magazine 407-647-0225
- Shoes**
- 25 Rieker Shoes 407-539-0425
  - 17 Shooz On Park Avenue 407-647-0110
- Specialty Shops**
- 2 Fig and Julep 321-972-1899
  - 5 The Ancient Olive 321-972-1899
  - 14 Brandywine Books 407-644-1711
  - 7 Christian Science Reading Room 407-647-1559
  - 15 Frank 407-629-8818
  - 13 Maureen H. Hall Stationery & Invitations 407-629-6999
  - 3 New General 321-972-2819
  - 13 Partridge Tree Gift Shop 407-645-4788
  - 20 Rifle Paper Co. 407-622-7679
  - 18 The Spice and Tea Exchange 407-647-7423
  - 19 Ten Thousand Villages 407-644-8464
  - 6 Witter's Book Bookstore 407-592-1498
- Sweets**
- 1 Ben and Jerry's 407-325-5163
  - 1 Kilwins Chocolates & Ice Cream 407-622-6292
  - 14 Peterbrooke Chocolatier 407-644-3200
- Travel Services**
- 10 Luxury Trips 407-622-8747
  - 18 Winter Park Welcome Center 407-644-8281
- Weddings**
- 1 The Collection Bridal 407-740-6003
  - 3 Winter Park Wedding Co. 321-274-6618
- \* = Not on Map





# INDEX

## SHOPPING

Axiom Fine Art/Consulting	01
Be On Park Fine Jewelry	06
Beau Wild, Artist	50, 95
Central Florida Moke	109
Ocean Blue Galleries	Back Cover
Oliver's Classic Cars	108
Rieker Shoes	26
Rifle Paper Co.	16
SEE Eyewear	12
Shoooz	19
Starling Cadillac	30
The Partridge Tree Gift Shop	105
Winter Park Village	84

## DINING & DESSERTS

310 Park South	20
blu on the Avenue	21
Hamilton's Kitchen	08
Hillstone	14
Keke's Breakfast Cafe	25
Kilwins Chocolate	112
Orchid Thai	83
Panera Bread	114
Reel Fish Coastal Kitchen + Bar	87
Swine & Sons	100
The Glass Knife	18
Winter Park Village	84

## MUSEUMS & THINGS TO DO

Axiom Fine Art/Consulting	01
Cornell Fine Arts Museum	10
Orlando Museum of Art	90

The Mennello Museum of American Art	22
Orlando Science Center	96
Winter Park Playhouse	112
Winter Park Scenic Boat Tour	03

## REAL ESTATE

Andrea Sider	82
Berkshire Hathaway	117
Cathy Sawruck Realty	54
Cindy Kuykendall	94
Fannie Hillman & Associates	28
Golden Oak Club	05
Greg Vazzana & Rosa Bachrach	102
Lou Supowitz	106
Olde Town Brokers	88
Premier Realty Partners	98
Rotenberger Land & Real Estate	86
Sotheby's International Realty	48
Wendy Williams Crumit	78

## HOTELS

Park Plaza Hotel	24
The Alford Inn	08

## MISC.

Anthros Human Resources	99
Ava Doppelt	89
Dr. Scott Rotatori	80
Garber Capital	103
Park Maitland School	113
The Mayflower	110

## HOME: ARCHITECTURE, DEVELOPERS & DESIGN

Angela Neel Interiors	64
Anne Rue Interiors	60, 107
Artisan Kitchen and Bath Gallery	52, 79
Beau Wild, Artist	50, 95
Cameron's Design	74
Canvas Interiors	76
Charles Clayton Construction	34, 81
Dave Cahill Homes	44, 104
Design Studio 15	70
Element Builders	46
Evan Fay	68
Golden Oak Club	05
Hardwick General Contracting	38, 97
Lauri Godfrey Interior Design	66
Lundev Homes	40, 93
Monark Premium Appliance Co.	56
Nasrallah Architectural Group	92
Phil Kean Design Group	36, 85
Suzanne Nichols Design Group	72
Wolfe-Rizor Interiors	62
Zoltan Homes	42, 101



"I would want to be associated with somebody where the financial strength was unquestioned and where the name stood for integrity. What other quality would you want that Berkshire Hathaway HomeServices does not have; and I don't think you could find one."

- Warren Buffett  
Chairman and CEO Berkshire Hathaway Inc.



**BERKSHIRE HATHAWAY**  
HomeServices  
Florida Realty

**LUXURY**  
COLLECTION™

Visit our Winter Park location at  
515 W. Morse Blvd. | Winter Park, FL 32789 | 407.406.5300

42 locations throughout Florida | [www.BHHSFloridaRealty.com](http://www.BHHSFloridaRealty.com)

☑ A member of the franchise system of BHH Affiliates, LLC





Clockwise from top: *Heaven's Harmony*, Steve Barton; *Turquoise Tsunami*, David Wight; *City of Love*, Alexei Butirskiy



202 Park Ave S • [www.oceanblue.gallery](http://www.oceanblue.gallery) • 321.295.7317