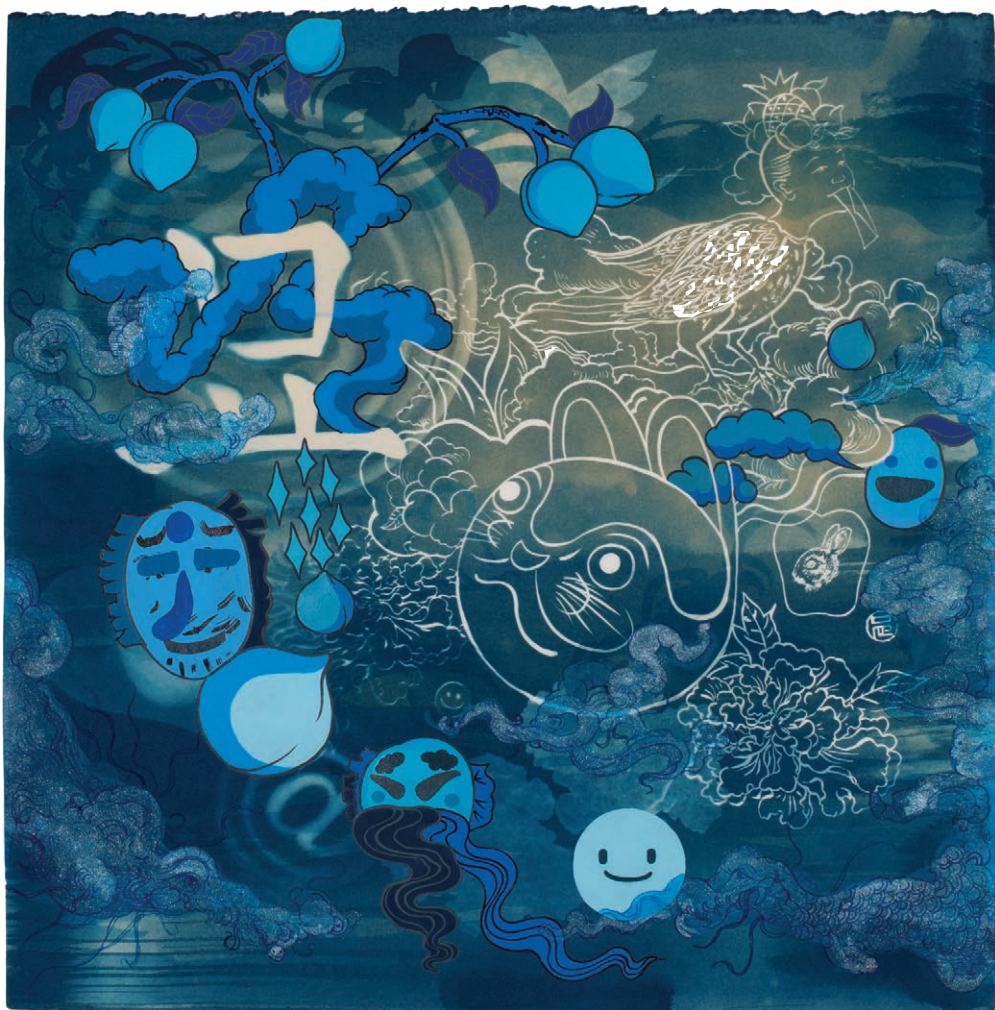


• FIFTH ANNIVERSARY ISSUE •

# PASSPORT

## WINTER PARK

SHOPPING • DINING • ARTS • HOME DESIGN







# THE ALFOND INN & HAMILTON'S KITCHEN

Just a short stroll from Park Avenue, The Alfond Inn is Winter Park's premier boutique hotel, blending warm hospitality with local flair. Owned by Rollins College, the hotel donates all net operating income to the school's premier scholarship program. Holidays invite you to cozy up with a Park Ave Pearl cocktail by the fireplace amid the growing Alfond Collection of Contemporary Art, enjoy seasonal events like Get Your Jazz On, and indulge in Hamilton Kitchen's unique spin on the Thanksgiving feast with favorites like Chef Stephen's turkey roulade with Irish stuffing and warm cranberry bread pudding. Elegant guestrooms and superior service round out the one-of-a-kind guest experience.

  
THE ALFOND INN  
Rollins  
A WORK OF HEART

*Hamilton's*  
KITCHEN

300 E New England Ave  
thealfondinn.com  
407.998.8089





Matina Williams, David and Janice Blumberg, Owners; Takai, Mascot

# BE ON PARK

FINE JEWELRY

Be On Park's philosophy is that jewelry should be loved, worn and enjoyed every day. Expecting the extraordinary, the discerning shopper will recognize exclusive collections such as Elizabeth Locke, JB Star, Penny Preville, Roberto Coin, John Hardy, Armenta, Todd Reed, Ippolita, Goshwara, Ray Griffiths, Jude Frances and Hermès watches. Throughout the store, you will find many one-of-a-kind, must-have treasures.



Be On Park Custom Design and Penny Preville Bridal

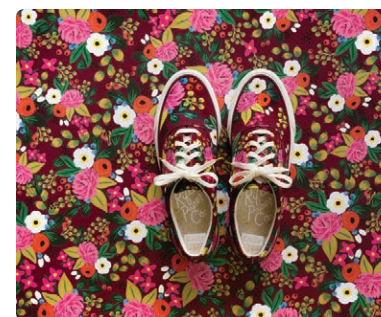


Elizabeth Locke Jewels



152 Park Ave S  
beonpark.com  
thedefinitive.com  
407.644.1106





# RIFLE REVEALED

Husband-and-wife team Anna and Nathan Bond — the masterminds behind the internationally acclaimed Rifle Paper Co. — share the story of their success, challenges they've met along the way, and what's in store for the future.

**In less than a decade, you've built a \$22 million company. What do you attribute your success to?**

Our success began with a unique aesthetic that seemed to resonate with a wide range of people. Our goal was to make something playful, happy, feminine, timeless and unique. We then worked very hard to take that initial excitement and turn it into a product range. There has been a lot of determination, long nights, tears,

problem solving, and working together as a company to cultivate that vision.

**Clearly print isn't dead, and you've been on the forefront of proving that. What about Rifle makes it resonate so widely?**

There will always be a place for paper goods, whether it's writing a card for encouragement, journaling your thoughts or writing to-do lists on a notepad. We like to think that we create products that brighten people's everyday lives.

**What do you enjoy most? What has been the biggest challenge?**

I enjoy being part of the entire process of bringing a product to life from the initial idea to seeing it sitting on a store shelf.

Part of that process is manufacturing, and we would probably say that is often the most challenging. It takes a lot of work to find great partners who can produce to our quality standards.

**What was your inspiration for Rifle?**

At the time, I was just trying to find something that worked. I was freelancing all different types of work when I began posting online new wedding invitations I had done. The response was much greater than anything else up to that point. Nathan and I kept talking about how we could expand and decided that instead of trying to design wedding invitations, we could take that look people loved and apply it to a wider range of stationery.

**Why is Winter Park the right home for the business?**

We started Rifle here because it is truly our home, but it has also been great from a business perspective. It's quiet, beautiful, we have talented locals to hire, and the cost of doing business is much more reasonable than a larger city. Hannibal Square will always be our home base, but we also have our warehouse operations in Maitland and a small studio in New York City.

**What's next for Rifle?**

We're very excited to get into more home and lifestyle products and will be launching a rug and pillow collection in October 2018. We also hope to expand our local retail store.



FALL 2018 • VOL.12

# FIFTH ANNIVERSARY ISSUE

Fall is for hiking mountain trails and leaves changing color ... and that is how **PASSPORT TO PARK AVENUE** was born: on Smuggler Trail in Aspen, Colorado. A quick call to artistic visionary Michael Bessire led to sitting down at Panera Bread on Park Avenue, where we created our first prototype. We both had spent 25-plus years at national magazines, knew the web was taking over, and saw an opportunity to fill a niche by designing a luxury guide to Winter Park and its newest hotel, The Alford Inn.

Fast-forward five years to what is now **PASSPORT WINTER PARK**, and we have expanded our real estate participation to custom home builders, interior design firms and renowned architects. We have broadened distribution to luxury hotels from Disney to downtown Orlando and have become a go-to resource for locals and visitors alike.

Armed with backgrounds in the national magazine industry, the talented team you see here are the best in the business, proving that **PRINT IS ALIVE WHEN DONE RIGHT**. Continuing with our polished aesthetic, portable size, and expert design and photography, we're looking forward to the next five years with anticipation. Thank **YOU** for all your support, and keep your eyes peeled for what's next. Spring is coming ...

## Denise Autorino

FOUNDER

[Denise@PassportLuxuryGuides.com](mailto:Denise@PassportLuxuryGuides.com)

## WHO WE ARE

A cadre of creatives bringing decades of national-brand experience to the pages of Passport Winter Park.

### Denise Autorino

FOUNDER/PUBLISHER

Passionate about creativity in business and artistic expression.

### Michael Bessire

CREATIVE DIRECTOR

Passionate about visual storytelling and typography.

### Audrey St. Clair

EDITOR

Passionate about stories, the craft of language, and correcting comma splices.

### Zach Stovall

STAFF PHOTOGRAPHER

Passionate about portraiture, food and beverage, and architectural interiors.

### Julio Ballesteros

DIGITAL ART DIRECTOR

Passionate about pixels and user behavior.

### Nancy Rotatori

ACCOUNT EXECUTIVE

Passionate about art, shopping and philanthropy.



FROM LEFT: Zach Stovall, Audrey St. Clair, Julio Ballesteros, Denise Autorino, Michael Bessire





Jean Claude Gustin, Social Media Manager/Clothing Consultant; Joshua McNeeley, Store Manager



Blair DeLongy, VP of Retail Operations; Craig DeLongy, Owner

## CURRENT

Current reshapes the typical shopping experience by creating a true lifestyle boutique that is simultaneously exciting and comfortable for our visitors. The store contains a varied selection of innovative fashion presented in a laid-back setting. Current's devotion to fashion coexists within a selection of luxury men's designer collections; we strive to carry well-constructed fashions from the most prominent and latest designers to give our clients individuality. We provide our clients the highest level of service in style assessment, alterations, personal shopping, and special ordering.

current  
BY JOHN CRAIG

128 Park Ave S  
currentmen.com  
407.628.1087

JOHN  CRAIG

132 Park Ave S  
johncraigclothier.com  
407.629.7944

## JOHN CRAIG

In 1996, the first John Craig retail location opened on Park Avenue with the goal of offering the best selection of high-end men's clothing, accessories and footwear. Our mission is to provide exceptional, timeless menswear for the sophisticated man along with individualized and unparalleled customer service. The Winter Park store continues to achieve industry-wide recognition on The Esquire Retail 100, a prestigious list recognizing America's finest menswear specialty stores. Men come to John Craig for the clothes, and they keep coming back for the experience.



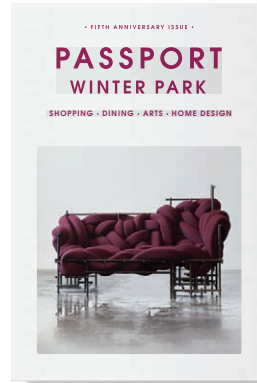
# VISUAL STORYTELLING

To celebrate our five-year anniversary, we've chosen five different yet equally powerful covers that feature fashion, food, arts and culture, design, and architecture. We reveal global superstar artists who expand our minds and introduce new ways to see a topic. Jiha Moon takes a fresh spin on pop culture, and Evan Fay celebrates irregularity in a system. Carmon Colangelo plays with art as part of the space-time continuum, while Holly Coulis experiments with still lifes and Kelly Reemtsen challenges gender roles.



## JIHA MOON

*Myo II (night)*, 2014, cyanotype, ink and acrylic on paper, 16 x 16 inches. Courtesy of the artist, Image credit: Collection of Amy Moorfield.



## EVAN FAY

*The Lawless Sofa*, 2018, burgundy Knoll Textile Stretch Appeal upholstery, steel, jointed by brass brazing, finished with heat patina, 66 x 40 inches.



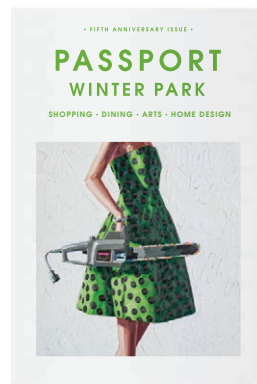
## CARMON COLANGELO

*Time Space #11*, 2018, ink on canvas, 61 x 44 inches, part of "Happy Planet" series. The painting fuses images created by hand-drawing, print and digital manipulations.



## HOLLY COULIS

*Two Tables, Oranges, Cherry Cola*, 2017, oil on linen. The Alfond Collection of Contemporary Art, Cornell Fine Arts Museum, Rollins College, 2017.6.55. Image courtesy of the artist.



## KELLY REEMTSEN

*First Impression*, 2018, oil on panel, 44 x 44 inches. Depicting the role of the modern-day woman, the artwork was just featured at a solo exhibition in Copenhagen, Denmark.



# EILEEN FISHER

Eileen Fisher often explains the inspiration for her business by saying, "I was an uncomfortable person, so I wanted comfortable clothes." For more than 30 years, her company has created simple, timeless clothes that have the power to change the way a woman moves and feels. At the heart of the brand is the System, eight simple pieces, each with a purpose. System pieces are scrutinized and perfected so they work with pretty much everything. Eileen Fisher is a leader in advocating for sustainability, human rights and the empowerment of women. Winter Park is its only retail store in Central Florida.



EILEEN FISHER

112 Park Ave N  
eileenfisher.com  
407.628.9260






Milena Dumas,  
Store Manager;  
Marley Goldin,  
Assistant Manager

## SEE EYEWEAR

Voted “Best Eyewear” over 65 times in readers’ polls from coast to coast, SEE is a gouge-free environment for people who appreciate trendy luxury eyewear without the absurd price tag. SEE’s philosophy of producing incredibly small quantities (many times only one or two of a single frame in a specific color per city or per store) makes SEE the go-to locale for eyewear aficionados looking for the closest thing to custom frames.







Sushi rice wrapped in nori with katsu lionfish seared with foie gras crab toro tartar and caviar lemon creme. Topped with Thai basil and 24-karat gold flakes.

FROM COLOR AND TEXTURE TO SHAPE AND balance, many elements converge to create an artful food presentation. In 2018, the art of plating has shifted from a more natural, random style to razor-sharp precision, structure, and focus. Chefs around the world have turned to effects such as scaling, molding and fanning. Food Network's World Extreme Chef Terry French — the new executive chef at UMI whose masterful creation is pictured here — traces his love of plating to his passion for art as a child. "I had always thought of what it would be like to be an assistant to Michelangelo and mix the paints that made his visions come alive," says French. As it turns out, French has become an artist in his own right, creating not only mesmerizing but delicious works of art.

# THE ART OF PLATING

PG. 14-45





World Extreme Chef  
Terry French

## UMI JAPANESE CUISINE & SUSHI BAR

Experience Winter Park's exciting new flavors as legacy Japanese cuisine melds with international culinary influences. Traditional favorites include Robatayaki grilled meats, seafood and vegetables, and masterly crafted sushi rolls. Japanese fusion cuisine adds an intriguing twist to the dining experience, with innovative originals such as Tuna Tataki, Lemon Citrus Lobster, Hamachi Kama and Matcha Green Tea Panna Cotta. Tapas-style plating allows patrons to share and sample while enjoying fine wines and one of the region's most extensive collections of premium Japanese beer and sake.



525 Park Ave S  
umiwinterpark.com  
407.960.3993





Chef Stephen Doyle

# HAMILTON'S KITCHEN



Named for Hamilton Holt, president of Rollins College from 1925 to 1949, Hamilton's Kitchen embodies one man's pursuit of innovation. The iconic president was known for inviting too many people over for dinner, saying "If you can find a chair, you're welcome in my kitchen." Different styles of chairs pop up as homage to Holt throughout the restaurant, where locally sourced ingredients fuse with the rustic charm of a bygone era. Located in The Alford Inn, Hamilton's serves breakfast, lunch and dinner seven days a week.

300 E New England Ave  
thealfondinn.com  
407.998.8089

*Hamilton's*  
KITCHEN





# THE GLASS KNIFE

Life is better shared — and we're serving the moments you've been waiting for. With coffee and cuisine from classic to casual, stop in for breakfast or lunch, even a romantic nightcap for two. And don't forget decadent cakes and elegant desserts that make the perfect addition to every festive holiday table.



276 S Orlando Ave  
theglassknife.com  
407.500.CAKE

THE  
GLASS  
KNIFE  
CAKES & CAFE

PASSPORT WINTER PARK





# THE RAVENOUS PIG



565 W Fairbanks Ave  
theravenouspig.com  
407.628.2333

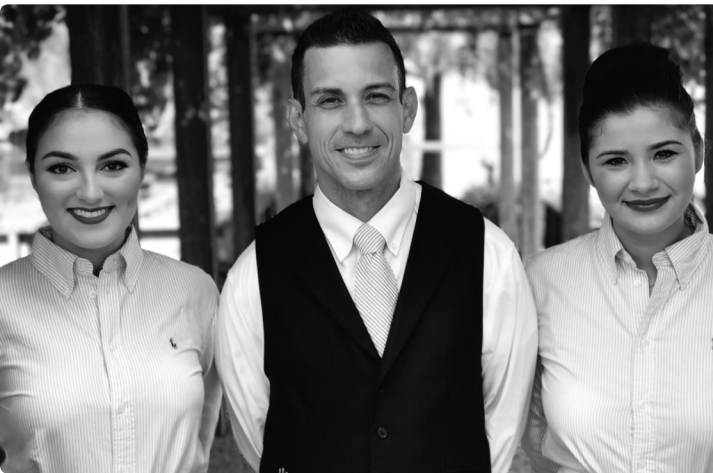
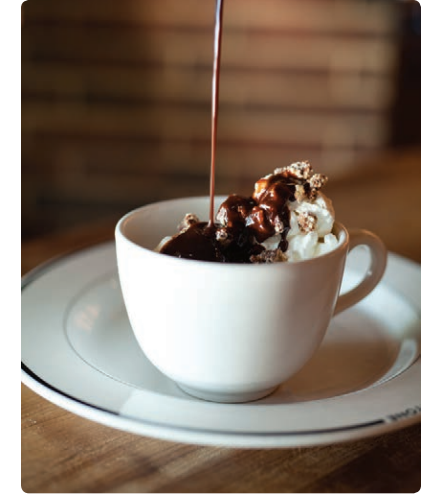
James Beard-nominated chef duo James and Julie Petrakis are at the helm of this critically acclaimed restaurant, serving sustainable food created with passion and prepared using ingredients sourced in Florida. The Ravenous Pig offers an extensive menu ranging from traditional pub fare to house-made pastas, creative salads and fresh seafood, in addition to seasonal cocktails, an extensive wine list and Cask & Larder craft beer brewed on site. Dinner 7 days a week, Lunch Wednesday–Saturday, and Sunday Brunch.





# HILLSTONE

SERVING WINTER PARK WITH PRIDE  
AND GOOD FOOD SINCE 1996



215 S Orlando Ave  
hillstone.com  
407.740.4005

HILLSTONE





310  
park south  
New American Cuisine

310 Park South  
407.647.7277

blu  
on the avenue

326 Park Ave S  
407.960.3778



# 310 PARK SOUTH BLU ON THE AVENUE

Established in 1999, 310 Park South makes you feel right at home with our cafe-style seating, great food, extensive wine list and full bar. Relax and enjoy our award-winning New American cuisine and our professional service with a personal touch. Inspired by locals and Orlando visitors, the Blu concept focuses on fresh seafood, sushi, prime steaks and classic cocktails. Dine alfresco or take a seat at the bar to enjoy a classic cocktail superbly mixed with fresh juices and specialty bitters. Enjoy fresh sushi rolls, smoked salmon fettucine or a slice of our delectable Italian cream cake.







Chef Camilo Velasco and Chef Norman Van Aken

# 1921 BY NORMAN VAN AKEN

Multiple James Beard award winner Norman Van Aken's rustic-refined restaurant in Mount Dora is a celebration of modern artisans fused with respect for craftsmanship, community and culinary diversity. With artwork that marries form and function and Modern Florida Cuisine like yellow-edge grouper with Kaffir lime, 1921 and its partner, the adjacent Modernism Museum, set the stage for a destination that nourishes the body and soul.



142 E Fourth Ave  
1921nva.com  
352.385.1921





## PLATING WITH NORMAN VAN AKEN

### **What is your approach to plating a dish before it is served?**

The time before one plates a dish is one of the most crucial factors in the final outcome. The colors of the food, the textures intended, the time between when the food is plated and when the guest receives it, the shape of the best dish to select are all at hand when these moments are in play.

### **What tools should a home cook have to take it up a notch?**

I advise on keeping things simple and without artifice. And I mean that whether it's from our professional kitchens or yours at home. Often when folks try to doll things up too much, there are unintended consequences. Clean, classic lines worked in fashion for Cary Grant, and they work in cuisine too.

### **What are your favorite ways to plate for holiday dinners?**

Elegance is the first thing that comes to mind. I don't go for snowmen and manger scenes when it comes to cuisine. We've been blessed by receiving heirloom china, silver and glassware handed down through the generations. Tablecloths and linen napkins are used. Candles are lit. Chafing dishes that are usually too over the top are divinely celebratory this time of year.

### **How much is too much when finishing a plate?**

It's like that house-of-cards game. If you get anywhere near a concern that things will topple over, you have gone too far.

### **What is your favorite garnish to use?**

White space.







# THE SPICE & TEA EXCHANGE



Linda Files, Owner

More than 45 of the finest loose-leaf teas from around the world.  
 Hundreds of spices and herbs.  
 85 custom spice blends, made daily.  
 Healthy corporate and holiday gift sets.



309 Park Ave N  
 spiceandtea.com  
 407.647.7423

# THE ANCIENT OLIVE

GOURMET FOODS  
 SERVING/CUTTING BOARDS  
 CHEESE/CHARCUTERIE  
 LUXURY CANDIES



Jeffrey Schrader and  
 Bryan Behling, Proprietors



324 Park Ave N  
 (in the Hidden Garden)  
 theancientolive.com  
 321.972.1899





Chef Bob Aungst



# THE LOST ART OF ENTERTAINING

Chef Bob Aungst is reviving the lost art of entertaining with handcrafted events and mid-century modern foods with cutting-edge twists. Chef Bob pioneered "The Lost Art of Entertaining" early in his career, building on his passion for the details and the impact of subtlety. For almost 30 years, Chef Bob has been crafting memorable experiences for VIP guests, celebrities, corporate clients, athletes and four U.S. presidents.



rockssticksandhell.com  
919.605.6033





# PUBLIX APRONS COOKING SCHOOL



Publix Aprons Cooking Schools are designed to give our customers a kitchen to learn, practice and have fun in. Our classes are meant to entertain, amuse and inspire you, giving you confidence no matter what you're cooking up. Our classes cover a world of cuisines and trendy topics, a baker's dozen of techniques, special seasonal topics, and even guest appearances by celebrity chefs — TV stars, cookbook authors and local restaurateurs. You can even schedule private, customized classes for special occasions, from showers to birthdays to company team-building events.



Matt Wall and Chef Jerry Craft

PUBLIX  
*Aprons*

COOKING SCHOOL

*Learning to have fun in the kitchen.*

Publix at Winter Park Village  
440 N Orlando Ave  
publix.com  
407.622.2264





## THE BRIARPATCH



252 Park Ave N  
thebriarpatchrestaurant.com  
407.628.8651

For nearly 40 years, The Briarpatch has called Park Avenue home, delivering every day on its reputation as one of Winter Park's most iconic restaurants. We serve from-scratch contemporary American cuisine in a rustic-chic atmosphere, inviting diners to go beyond the usual, to explore a mélange of flavors in new and creative ways — from our Nutella waffle with fresh strawberries and mascarpone to our hand-ground California burger to our famous desserts. Our daily specials rotate with the season and always feature the freshest ingredients we can source.



## KILWINS

CHOCOLATE • FUDGE • ICE CREAM



Since 1947, Kilwins® has earned a reputation for its quality products and excellent service. Using only the finest and freshest ingredients, our products are a pleasure to sell, and we delight in seeing our customers enjoy them. Enjoy the experience of watching our Hand-Crafted Fudge being paddled to perfection. Kilwins® Chocolates, Fudge, and Ice Cream are the best confections you will ever enjoy!

122 Park Ave N  
kilwins.com  
407.622.6292







ORLANDO  
SCIENCE  
CENTER

777 E Princeton St  
osc.org  
407.514.2000



## ORLANDO SCIENCE CENTER EVENTS

With a variety of indoor and outdoor settings, Orlando Science Center is sure to be the perfect backdrop for your special day. Breathtaking, romantic settings abound as you say "I do" while the Florida sun sets over downtown Orlando or by the picturesque lakefront. Your closest friends and family will never forget a celebration shared with dinosaurs and stargazing ... and neither will you. To learn more or request pricing information, visit [osc.org/weddings](http://osc.org/weddings).



## FRANCESCO'S RISTORANTE • PIZZERIA

In authentic Italian tradition, we select our simple, whole ingredients and combine them by hand with heart, using the time-honored method of open-flame cooking. From our handmade mozzarella to artisanal pizzas, pastas and salads, we have a passion for quality and pride in our product that we know you'll appreciate. Reservations suggested.



400 S Orlando Ave, #104  
Maitland  
[francescos-rist.com](http://francescos-rist.com)  
407.960.5533







# ARTHUR'S CATERING



Arthur's Creative Events & Catering is now in its third decade of bringing sensational catered events to life. Arthur's has a proven ability to infuse deliciously innovative cuisine and unmatched service into every type of event you can imagine. Whether you're planning an intimate dinner party or an elegant wedding, you can depend on Arthur's to make it spectacular. Contact us today to plan your next celebration!



860 Sunshine Ln  
Altamonte Springs  
arthurscatering.com  
407.331.1193

At Bernie's, coffee is so much more than a morning routine.

It's a ritual, a meditation, a daily celebration over a cup of perfectly roasted beans. It's a journey through layer upon layer of rich flavor, sourced from the best coffee crops around the world. At Bernie's CoffeeKitchen, our cafe on Park Avenue, we perfect our micro-roasts, push the limits of coffee artistry, and create exciting menu items like our savory BCK Benedict. Bernie's doesn't just get you going; it gives you grounds for adventure.



# BARNIE'S COFFEEKITCHEN



118 Park Ave S  
barniescoffee.com  
407.629.0042

**BARNIE'S**  
COFFEE TEA CO.





# MONARK PREMIUM APPLIANCE CO.

IN THE KITCHEN WITH  
EXTREME CHEF TERRY FRENCH

**WHAT EXPERIENCE TELLS US** — It's why builders count on us. It's why architects and designers consult us. And it's why remodelers turn to us first. Whether a luxury home developer or a highly discerning homeowner, every customer who enters a Monark showroom enjoys a distinctive, memorable experience. Offering an unrivaled selection of the finest home appliances, Monark meets the most exacting standards — the same standards we've held ourselves to from the very beginning.



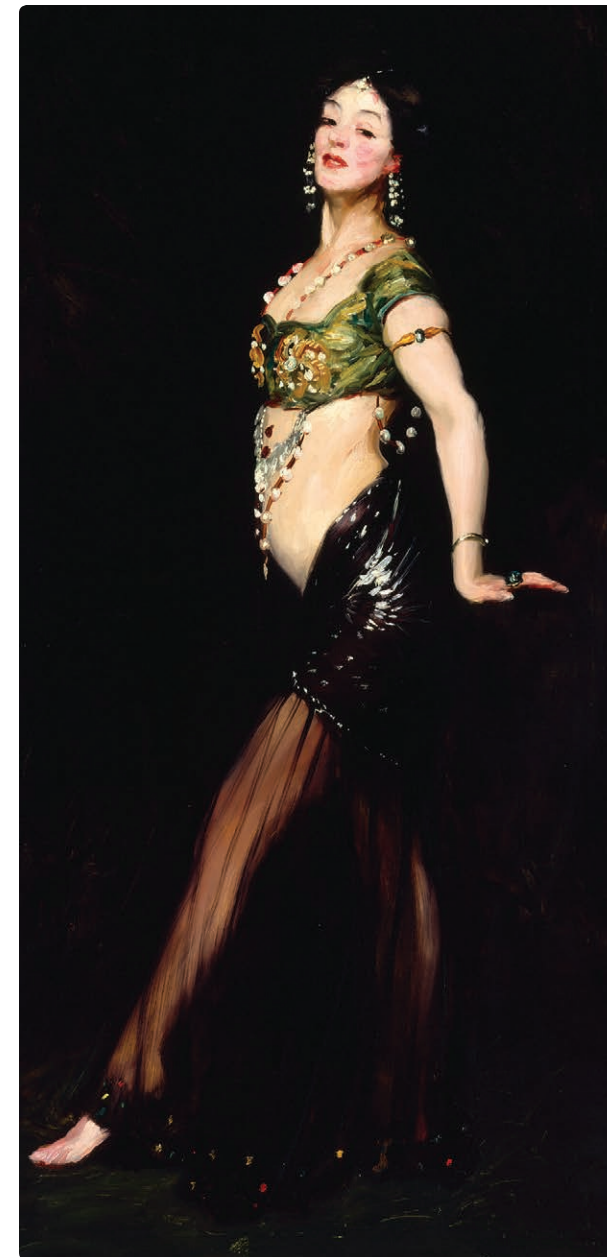
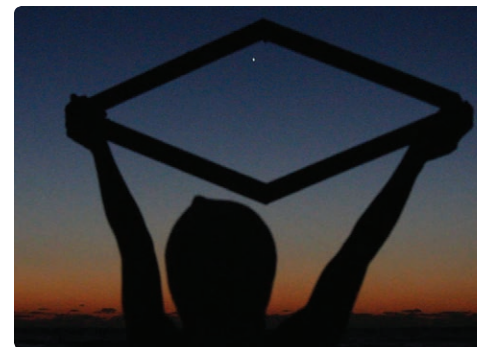
500 Park Ave S  
monarkhome.com  
407.636.9725

**CHEF COLLECTION**



# CORNELL FINE ARTS MUSEUM

What do European Baroque paintings, Central Florida history, contemporary artists, the news (fake or otherwise), and 21st-century feminism have in common? The answer: Three thought-provoking new exhibitions on view this fall at the Cornell Fine Arts Museum. Enjoy them for free (courtesy of PNC Financial Services Group). As always, during the summer new acquisitions have joined our contemporary collection on view at The Alford Inn at Rollins. Join us for weekly tours at both locations.



**OPPOSITE:** Pietro da Cortona, (Italian, 1596–1699), *Hagar and the Angels*, Oil on canvas, ca. 1643, Courtesy of the John and Mable Ringling Museum of Art, Bequest of John Ringling, SN 132. **TOP LEFT:** Jamilah Sabur (b. 1987), *Untitled* (rhombus: cradling Mars west of the Sargasso Sea), 2017, Video Still, Courtesy of the artist and Nina Johnson Gallery. **ABOVE LEFT:** Fred Tomaselli, *Jan 26, 2013*, Gouache printed on printed watercolor paper, 2013, The Alford Collection of Contemporary Art, Cornell Fine Arts Museum, Rollins College © Fred Tomaselli. Image courtesy of the artist and James Cohan Gallery, New York/Shanghai. **ABOVE RIGHT:** Robert Henri, (American, 1865–1929), *Salome*, Oil on canvas, 1909, Museum purchase 1974, SN 937 Courtesy of the John and Mable Ringling Museum of Art.

**Rollins**  
CORNELL FINE ARTS  
MUSEUM  
1000 Holt Ave  
(on Rollins campus)  
@cfamrollins  
407.646.2526





Anna Bond,  
co-owner



558 W New England  
Ave, No 150  
(entrance on  
Pennsylvania Ave)  
407.622.7679  
@riflepaperco  
@riflepaperco



# RIFLE PAPER CO.

Rifle Paper Co. is an international stationery and lifestyle brand founded and owned by husband-and-wife team Anna and Nathan Bond. At their flagship store in Winter Park's Hannibal Square, you'll find an assortment of products — greeting cards, gifts, phone cases, prints, planners, calendars — most of which are printed locally and assembled by hand.





# SHOOOZ



303 Park Ave N  
shoozonpark@yahoo.com  
407.647.0110

The heart and soul of Shoooz is its unique presentation of modern comfort footwear mixed with good old-fashioned personal service. Our extensive hand-chosen collection spans the globe, from the funky styling of Fly London to the timeless elegance of Beautifeel. Shoooz invites you to stop in and experience the evolution of fine comfort footwear.







## ATOMIC BARBER CO.

CLASSIC CUTS & CLEAN SHAVES



Trevor Brown, Owner;  
Jordan Nogle, Manager

With a voodoo-lounge-meets-speakeasy kind of vibe, Atomic Barber Co. isn't your usual barbershop. Trevor Brown has turned his love of haircuts — and community — into a one-of-a-kind business that's all about the customer experience. Here it's about reveling in the camaraderie and tradition and savoring the sights and smells that invite you to spend time on yourself. Don't even think about turning on your cell phone, though. When you're in the chair, it's time to unplug. Prices range from \$35 to \$65.

400 W New England Ave, #8  
atomicbarber.co  
407.636.7685



## MY URBAN LODGE



444 W New England Ave, Ste 118  
myurbanlodge.com  
407.960.7503



Emily Kennedy,  
Owner

A native Central Floridian and lover of all things décor, Emily Kennedy brings 15 years of experience in the L.A. fashion industry to her newly opened home and garden store, My Urban Lodge, right off Park Avenue. Spruce up your space at this unique boutique, where East Coast meets West Coast and everything from home furnishings and accessories to tableware and succulents is sure to suit every lifestyle and budget.

MY  
URBAN  
lodge





Dr. Mitesh Jivan received a Master's of Public Health and a Doctorate of Dental Medicine from Nova Southeastern University. Dr. Jivan maintains a private boutique practice with a focus on family dentistry, Invisalign, veneers and rehabilitation of the orofacial complex. He has completed extensive training in cosmetics, implants, craniofacial pain, sleep medicine, Botox and dermal fillers. Our friendly and compassionate staff helps patients through modern dentistry, technological advances and ease of accessibility, customizing care to suit individual needs.

# ADVANCED PARK DENTAL



Arti Patel, Nirali Jivan,  
Dr. Mitesh Jivan, Linda DiDea, RDH

329 N Park Ave, #360  
(Above Panera Bread)  
advancedparkdental.com  
407.628.0200



*You can find a two-story home anywhere.  
Here, you'll find a lifetime of stories.*

Enchanting family moments are part of everyday life at Golden Oak at Walt Disney World Resort. Right now, you can live in this luxurious private community with legendary Disney service featuring custom homes from \$2 million. Welcome home to where the magic is endless. Golden Oak Realty | 407.939.5713 | DisneyGoldenOak.com/Inspired



**DISCLOSURE** Obtain the Property Report required by Federal law and read it before signing anything. No Federal agency has judged the merits or value, if any, of this property. This does not constitute an offer to sell, or a solicitation to buy, real estate to Residents of any state or jurisdiction where prohibited by law, or where prior registration is required but has not yet been fulfilled. For NY Residents: THE COMPLETE OFFERING TERMS FOR THE SALE OF LOTS ARE IN THE CPS-12 APPLICATIONS AVAILABLE FROM OFFEROR, GOLDEN OAK DEVELOPMENT, LLC. FILE NOS. CP16-0107 (Phases 2 and 4) and CP16-0069 (Phase 3). For California Residents: WARNING: THE CALIFORNIA BUREAU OF REAL ESTATE HAS NOT INSPECTED, EXAMINED OR QUALIFIED THIS OFFERING. PA REGISTRATION No. OL001147. KY REGISTRATION No. R-176. OKLAHOMA OFFEREEES SHOULD OBTAIN AN OKLAHOMA PUBLIC OFFERING STATEMENT FROM THE DEVELOPER AND READ IT BEFORE SIGNING ANY DOCUMENTS. THE OKLAHOMA SECURITIES COMMISSION NETHER RECOMMENDS THE PURCHASE OF THE PROPERTY NOR APPROVES THE MERITS OF THE OFFERING. Void where prohibited by law. Equal Housing Opportunity. Broker participation welcome. © Disney DGO\_18\_188174



# RUTH HILL YEILDING, MD

Ruth Hill Yeilding, MD, is a double board certified Facial Plastic Surgeon super specialized in eye and face. Dr. Yeilding focuses exclusively on facial rejuvenation, offering services from medical-grade skin care, chemical peels, BOTOX and fillers to laser resurfacing and surgery. Her surgical specialties are facelifts and her signature laser eyelid lift. Dr. Yeilding is known for her natural results with an extraordinary caring manner, creating a highly positive patient experience.



328 W Morse Blvd  
yeildingmd.com  
1.855.YMD.FACE  
407.960.1000





# OCEAN BLUE GALLERIES

CELEBRATING ONE YEAR ON PARK AVENUE

With over 48 years of experience in the art world, the owners/operators of Ocean Blue Galleries bring world-renowned artists to Winter Park with a mission to enhance your life and beautify your home or office. A big one-year anniversary weekend celebration will take place Nov. 2-3 from 6 to 10 p.m., showcasing artist Michael Cheval, a contemporary artist specializing in Absurdist paintings, drawings and portraits. Ocean Blue Galleries is delighted to be part of the Winter Park community. Plan to visit the gallery this fall through spring when you will meet our artists and see them painting live and interacting with visitors. [www.oceanblue.gallery](http://www.oceanblue.gallery)



From left: Owners Guy Vincent, Jay Shaffer and Bobby Gray



## JANE MCLEAN

THE ART OF EVENT PLANNING

Every day, Jane McLean brings her 20 years of experience in hospitality and events to work in her role as director of catering at The Alford Inn. McLean attended New York's Culinary Institute of America with the intent of becoming a chef, but then fell in love with bringing people's milestones and celebrations to life. McLean credits collaboration as one of the most important elements of creating a successful event, and her talented team at the Alford works tirelessly to exceed clients' expectations. Unlike other larger hotels, events at The Alford Inn — the proceeds of which support the premier scholarship fund at Rollins College — take place one at a time, allowing the staff to flawlessly execute each detail. McLean's dad was right when he said she'd always be working when everyone else was having fun, but it turns out it's fun for her too every time she's able to make her clients' dreams a reality. [thealfordinn.com](http://thealfordinn.com)



# ORLANDO MUSEUM OF ART

Indulge your curiosity at the Orlando Museum of Art.  
Only minutes from Park Avenue and Downtown Orlando.



ABOVE: Purvis Young, *Renaissance Angel*, mid-1980s, paint on skid, 41 x 29 x 5 in. Gift of Daniel Aubry. © Purvis Young. Image courtesy of the Orlando Museum of Art.

## EXHIBITIONS

**Nick Cave: Feat.  
+ Purvis Young  
and His Angels  
Dual Exhibition  
Opening Reception**  
SEP 14, 2018  
6:30-8 P.M.

**Nick Cave: Feat.**  
SEP 14-DEC 30, 2018

**Purvis Young  
and His Angels**  
SEP 14-MAR 3, 2019

## SPECIAL EVENT

**New Year's  
Eve Party**  
DEC 31, 2018  
9:30 P.M.-1:30 A.M.

ORLANDO  
MUSEUM OF ART

2416 N Mills Ave  
omart.org  
407.896.4231



TOP: Nick Cave, *Architectural Forest*, 2011, bamboo, wood, wire, plastic beads, acrylic paint, screws, fluorescent lights, color filter gels, and vinyl, 136 x 372 x 192 in. Courtesy of the artist and Jack Shainman Gallery, New York, in collaboration with the Fabric Workshop Museum, Philadelphia. © Nick Cave. LEFT: Nick Cave, *Soundsuit*, 2013, mixed media, including vintage bunny, safety pin craft baskets, hot pads, fabric, metal, and mannequin, 111 x 36 x 36 in. Courtesy of the artist and Jack Shainman Gallery, New York. © Nick Cave. MIDDLE: Nick Cave, *Rescue*, 2014, mixed media, including ceramic birds, metal flowers, ceramic basset hound, and vintage settee, 70 x 50 x 40 in. Courtesy of the artist and Jack Shainman Gallery, New York. © Nick Cave. RIGHT: Nick Cave, *Soundsuit*, 2016, mixed media, including a mask with horns, various toys, globes, wire, metal, and mannequin, 85 x 45 x 40 in. Courtesy of the artist and Jack Shainman Gallery, New York.

NICK CAVE PHOTOS: JAMES PRINZ PHOTOGRAPHY

PASSPORT WINTER PARK



# HOME DESIGN

PG. 62-75

The following 12 pages reveal some of the area's most sought-after designers, home builders, architects and artists, each bringing their own distinctive style and flair to every space they create. These talented visionaries are always ahead of the trends and pride themselves on delivering a design tailored to each individual client at every turn and with every detail.





Charlie Clayton III,  
Owner



# CHARLES CLAYTON CONSTRUCTION



CHARLES CLAYTON  
CONSTRUCTION

2250 Lee Rd, Suite 120  
charlesclayton.com  
407.628.3334

Charles Clayton Construction, Central Florida's premier custom homebuilder, specializes in one-of-a-kind new construction and home remodels while remaining committed to quality craftsmanship, community and family. A Winter Park resident, Charlie Clayton III and his family have been building homes throughout Central Florida for nearly 70 years. Please call us at 407.628.3334 today to schedule a complimentary review of your upcoming project.



AVAILABLE 2019

PASSPORT WINTER PARK





FROM TOP LEFT: UNEEK IMAGE (2); COURTESY TIMBERLAKE CABINETRY, COURTESY LAKE NONA REALTY



Phil Kean



# PHIL KEAN DESIGN GROUP

2017 BEST CUSTOM HOME BUILDER  
— ORLANDO BUSINESS JOURNAL



912 W Fairbanks Ave  
philkeandesigns.com  
407.599.3922

Architecture by Phil Kean, LLC AA26002050  
Phil Kean Designs, Inc. CRC1327855; PKD Studio, LLC ID6290

Dedicated to service and excellence, our mission is to provide the complete solution for award-winning design and construction of architecturally distinctive spaces integrating the finest quality of products and services. Whether your tastes are modern or traditional, Phil Kean Design Group specializes in creating one-of-a-kind, luxury residences with extraordinary attention to design detail, sustainable construction, and seamless transitions of indoor and outdoor spaces.

**Architecture • Construction • Interior Design  
Kitchen and Bath • Real Estate**





Audrey Morrone, Owner

# MORRONE INTERIORS

Morrone Interiors has won several awards, including the Design Specialty award in the 2018 Parade of Homes, making Audrey Morrone's firm one of Central Florida's most coveted design boutiques. Morrone Interiors believes that building client relationships through exceptional service is as important as the designs they create. Whether constructing a modern or traditional space, our philosophy remains the same: to create comfortable, livable and sophisticated rooms with an innovative edge.

MORRONE  
INTERIORS  
516 E Jackson St  
morroneinteriors.com  
407.648.9090





## NASRALLAH ARCHITECTURAL GROUP, INC.

For 36 years, Mark Nasrallah and his team of talented designers have been designing award-winning architecture by producing designs that possess propriety, timelessness and beauty. Their latest project was originally the site of a maintenance building in Winter Park's Alabama condo complex. Nestled on an oak-lined street, this 1980s-site-of-disrepair-turned-townhome now serves as the home away from home for the Douglas family, featuring an outdoor living area perfect for entertaining or relaxing.



anne rue  
INTERIORS

4260 Church Street,  
#1300, Sanford  
annerue.com  
407.322.6742



## ANNE RUE INTERIORS

Anne Rue Interiors is Central Florida's premier luxury interior design firm. Lead by principal designer Anne Rue from HGTV's *Design Star* and Travel Channel's *Hotel Impossible*, ARI was named one of the top 3 interior design firms in Orlando. The full-service design firm specializes in luxury residential, model merchandising, multi-family housing and senior living. Anne Rue Interiors creates beautiful and functional spaces from coast to coast by building and maintaining strong partnerships with industry experts, builders and architects to exceed client expectations with every detail.



NASRALLAH  
ARCHITECTURAL GROUP, INC.

3920 Edgewater Dr, #101  
Orlando  
nasrallah.com  
407.647.0938

#AA26001471



# MARK PULLIAM ARTIST

807 S Orange Ave, Ste N  
markpulliam.com  
407.636.9286

A passionate, creative thinker who pushes boundaries with color and texture, Mark Pulliam creates polished paintings with an edge. He collaborates with designers and collectors to produce art that entices the viewer to find their own story within. His years of experience honing his craft and listening to clients define his creative process, enabling him to deliver superior products on time and on budget. While each piece has its own inspiration, the end result always contains a polished edge that's uniquely Mark Pulliam.



Mark Pulliam and  
Judy St. Peter

## THE ART OF MAKING HOME



SPECIAL SAVINGS GOING ON NOW

# ETHAN ALLEN®

— EVERY DETAIL MATTERS —

**WINTER PARK DESIGN STUDIO**

329 N. PARK AVENUE SUITE 101B 407.622.1987

Sale going on for a limited time. Exclusions apply. Ask a designer or visit [ethanallen.com](http://ethanallen.com) for details.  
©2018 Ethan Allen Global, Inc.



# BEAU WILD

## HIDDEN BAY STUDIO

A native Floridian, Beau Wild paints daily in her studio along Rose Bay in Port Orange, focusing on abstract and figurative painting. For 30 years she has explored the bond between painter and subject, the subject alone or in groups and her relationship with herself. Questions about people's behavior and what motivates their actions and reactions propel Wild's creativity, whether it's an elderly woman's feeling of isolation, an outsider's anxiety when courting a new friend or the forgotten lives of those who have passed. Even though Wild always assumes the objective position of the observer, these glimpses open a small window through which she evaluates her own life through painting.





# THE REALTORS OF WINTER PARK

PG. 76-95

UNIQUELY, MOST OF THE REAL estate professionals in the following pages are longtime residents of Winter Park and are passionate about the community in which they live and work. They have long-standing relationships with their clients and are ready to make your next dream home a reality. Each of these realtors and mortgage specialists brings extensive market knowledge to the negotiating table along with an eye on the ever-changing trends.

Prospective homebuyers will be excited to learn that the rocketing rise in prices seen over the past several years has stabilized as of summer 2018 in the healthy single digits. In Orlando for the past three months, the year-over-year median price has increased between 6 and 7 percent.

“There has been an uptrend in urban living here in Winter Park — the closer to downtown Winter Park, the better. Many of the buyers looking for walking distance to retail and restaurants are downsizing, and many of these buyers are multiple homeowners wanting the convenience of lock and leave.”

DEBBIE TASSELL  
Realtor, Phil Kean Real Estate

SOURCE: ORLANDO REGIONAL REALTOR ASSOCIATION



## LOVE WHERE YOU LIVE

CINDY KUYKENDALL

As a Winter Park Wildcat and Central Florida native, Cindy knows Orlando. With over 15 years of real estate experience, Cindy consistently ranks as a top producer because of clients' trust in her intimate understanding of the area's neighborhoods and schools. Whether you're looking for your dream home or selling your current property, Cindy delivers the dedication, integrity and local know-how you need to *love where you live*.



205 W Fairbanks Ave  
cindy@fanniehillman.com  
407.718.3235

PASSPORT WINTER PARK





# PHIL KEAN REAL ESTATE

The addition of the real estate division to the Phil Kean Design Group puts all our services under one roof — from selling a client's existing home to procuring land for new construction to buying a remodel. Broker Brad Grosberg and his team of seasoned realtors work with PKDG's clients and other homeowners throughout Central Florida, brokering everything from mid-century bungalows and luxury townhomes to lakefront estates and resale condo units.



906 W Fairbanks Ave  
philkeanrealestate.com  
407.982.2265





*WELCOME*  
**home**

*Founded in 1981* by Fannie Hillman, this independent, full-service residential real estate agency has served the community with integrity and quality customer service for over 37 years. **Fannie Hillman + Associates** is a trusted neighbor whose staff of licensed brokers and sales associates are actively involved in the local community.

**Fannie Hillman + Associates**

205 West Fairbanks Avenue • Winter Park, FL 32789  
407.644.1234 • [www.fanniehillman.com](http://www.fanniehillman.com)

**Hillman**  
**Fannie Hillman**  
**Hillman**  
ASSOCIATES



# REAL ESTATE ROOTS



Sam Hillman,  
Fannie Hillman,  
Founder;  
Scott Hillman

Fannie Hillman + Associates was founded in 1981 by Fannie Hillman, a single mother of three and former school teacher. This independent, full-service residential real-estate agency now boasts more than 60 real-estate agents. “I believe a home is at the heart of a family,” says Hillman. “And we take our role seriously in helping people find their special, individual home — their own cornerstone for stability, security and well-being. It truly is humbling to be in the position to impact the day-to-day lives of thousands of Central Floridians.” [fanniehillman.com](http://fanniehillman.com)



Integrity. Competence. Results. These three words have become synonymous with The Bagby Team. The Bagby Team has been the highest producer at Fannie Hillman + Associates for 31 consecutive years. In 2017 they had their best year yet, selling more than \$52 million in real estate. As a team, they have 70 years of combined real estate experience and more than \$720 million in lifetime real estate sales. The Bagby Team specializes in Winter Park, Maitland, College Park, Baldwin Park and surrounding areas. Contact them today for a confidential consultation.



Nancy Bagby – 407.376.2100  
SueAnn Rand – 407.718.2847  
Julie Bagby Williams – 407.620.8868  
205 W Fairbanks Ave  
[fanniehillman.com](http://fanniehillman.com)

# THE BAGBY TEAM



SueAnn Rand,  
Nancy Bagby and  
Julie Bagby Williams





Tuni & Paige,  
Owners



# TUNI

Celebrating its 33rd year of trendy and chic style, Tuni, on the corner of Park Avenue and New England, has been enhancing the hearts and closets of the fashion-forward since 1986. Owned by mother-daughter duo, Tuni and Paige Blackwelder, this beloved boutique showcases a veritable collection of well-known and up-and-coming designers. Personal styling, closet consults and private shopping parties complete the experience that makes Tuni a unique yet iconic pillar of the Winter Park style community.



301 Park Ave S  
shoptuni.com  
407.628.1609  
tuniwinterpark



Carol Wittman, Realtor; Karen Knox,  
Office Manager; Pamela Stewart, Broker

# WINTER PARK LAND CO.

Since 1904, the Winter Park Land Co. has provided a full range of real estate services, both residential and commercial, to Winter Park and Central Florida. Serving as an integral part of the development of the community and earning a reputation for honest, ethical business practices, our company continues its tradition of professional service. Whether you are new to the market or an experienced investor, we have the expertise, proven track record and resources to help you achieve your real estate goals.



122 Park Ave S  
winterparklandco.com  
407.644.2900







## KELLY PRICE & COMPANY

243 W Park Ave  
kellypriceand  
company.com  
407.415.0338

# THE ART OF REAL ESTATE

LOU SUPOWITZ

Living in Winter Park for over 25 years, Lou Supowitz has a distinguished record of public service to Central Florida through his involvement with philanthropic foundations and commitment to arts and culture. Orlando Mayor Glenda Hood honored him as the recipient of the Vision Award for Innovation. Lou's experience on both sides of real estate transactions makes the process seamless for all parties, while his unwavering work ethic and previous career in television and marketing set him apart.

# CUSTOM HOME BUILDERS

THIS YEAR, PASSPORT WINTER PARK became a member of the Greater Orlando Builders Association, the authority, educator and promoter of the housing and building industry serving more than 700 members. To get firsthand insights into the current home-building trends, we reached out to two of their most prominent members. These builders are also members of the Master Custom Builder Council, a group whose goal is to maintain the highest professional standards in the home-building industry.

## CHARLIE CLAYTON III

**Owner, Charles Clayton Construction**

"We see many opportunities in remodels but much more so in knock-down properties with walkability to Winter Park's Park Avenue. Empty-nester downsize properties are in high demand with less footage, more quality, and more thoughtfulness in design, function and sustainability."

## GREG HARDWICK

**President, Hardwick General Contracting; Vice President of the MCBC**

"When looking for a builder, we recommend one that meets the criteria of the Master Custom Builder Council (MCBC). We're seeing our business is about half remodels and half new-home projects, as people are finding they have equity in their homes again and are willing to put significant investments into improving their homes. Environmentally clean is big, and getting certified green is still very popular."







# PARK MAITLAND SCHOOL

CELEBRATING 50 YEARS  
OF WONDER-FILLED LEARNING

When learning begins in wonder, there's no end to excellence. For 50 years, Park Maitland students have excelled beyond ordinary in a wonder-filled environment. Where innovation is a tradition and inspired teaching has passed the test of time, it's no wonder students become out-of-the-box thinkers, lifelong learners and compassionate leaders. At Park Maitland, curiosity sparks creativity, confidence is cultivated and achievement rises to the level of awesome!



1450 S Orlando Ave  
parkmaitland.org  
407.647.3038

# WENDY WILLIAMS CRUMIT

INTEGRITY • KNOWLEDGE • EXPERIENCE

Wendy Williams Crumit is a dedicated real estate professional who has specialized in Winter Park, Maitland and the surrounding areas for more than 18 years. She has earned top accolades in her industry and ranks as one of Fannie Hillman's Top Producers. She understands how important buying or selling is to her customers and ensures each one has the best experience possible.



205 W Fairbanks Ave  
wendy@fanniehillman.com  
321.356.8590





Enjoy specialty stores,  
delicious restaurants,  
luxurious salons,  
the latest movies,  
convenient grocery store,  
lifestyle apartment homes,  
or sit by a sparkling fountain  
and watch the world go by.  
It's a one-of-a-kind destination.

*shop, dine, unwind & live in style!*



ShopWinterParkVillage.net  
407.571.2700



Nicole Howell, Realtor; Leslie Heimer, Senior Lending Partner

## HOWELL & HEIMER

REALTOR AND LENDER



Nicole Howell – 321.217.7918  
Leslie Heimer – 407.494.9833  
205 W Fairbanks Ave  
fanniehillman.com  
alморlando.com  
NMLS #1462

Nicole Howell and Leslie Heimer were recently recognized for closed transaction volume among real estate and lending partners in Central Florida. Howell's clients say that her drive and keen negotiating skills ensure her listings receive top dollar. When representing buyers, her attention to detail exceeds expectations, and she knows the niche markets like only a local could. Howell attributes smooth closings and more qualified buyers to Leslie Heimer, whose creativity and experience in residential financing goes back three generations. This powerhouse team represents the best in real estate for Central Florida's finest families.



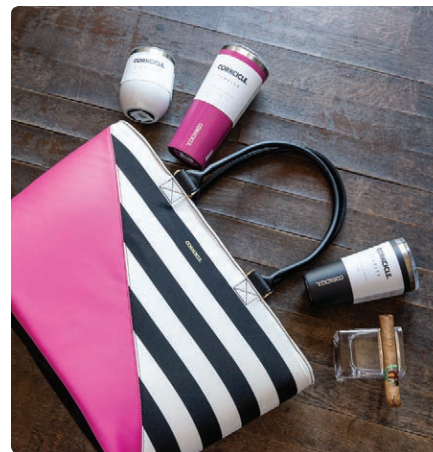
# THE PARTRIDGE TREE

## GIFT SHOP



Edward Bosch, Manager; JoAnne McMahon, Owner

For over 16 years on Park Avenue, The Partridge Tree Gift Shop is the perfect place to find a great gift for a friend, family member or yourself! We carry a large selection of greeting cards for any occasion.



The Partridge Tree Gift Shop

316 Park Ave S  
407.645.4788



Steve Healey, Chocky Burks  
and Matt Tomaszewski

# PREMIER

# REALTY PARTNERS

## SPECIALISTS IN LUXURY REAL ESTATE

Premier Realty Partners, the exclusive sales agent for The Reserve at Interlachen, is one of Central Florida's most accomplished luxury real estate teams. With 25-plus years of experience, broker/president Chocky Burks is consistently ranked among Central Florida's top 1 percent of realtors, and co-founders Steve Healy and Matt Tomaszewski bring decades of experience and professional accolades to the table. All three are involved in charitable causes related to the arts, health care and children's issues. Delighted clients report exemplary service, personal attention and peerless professionalism.

PREMIER  
REALTY PARTNERS

7958 Via Dellagio Way  
prpfl.com  
407.965.1155





## PAT COLLADO TEAM

COLLADO REAL ESTATE



### FOR SALE: Oceanfront home in New Smyrna Beach

This North Beach Craftsman compound sprawls over 1.15 acres of natural beauty alongside the glistening Atlantic Ocean. The main home includes four bedrooms, three full baths, a chef's kitchen, expansive terraces, as well as a pool, spa, library-media room and extensive owners' retreat. The spacious oceanside guest cottage overlooks stonework terraces, with attention to detail at every turn. An outdoor kitchen complements the symbiotic transition from inside to out in this one-of-a-kind oceanfront retreat. **\$3,500,000**

402 Flagler Ave  
colladorealestate.com  
pat@colladorealestate.com  
386.427.0002

Pat Collado Team  
Collado Real Estate

## CERTIFIED MORTGAGE PLANNERS

SALLY VANCE



380 Flagler Ave  
New Smyrna Beach  
teamsally@cmpfl.com  
407.915.0788

NMLS#858054  
CMP NSB: NMLS#1575196

Team Wonder Women, led by Sally Vance, senior mortgage consultant, focuses on creating lifelong clients by providing a first-class mortgage experience for buyers and their realtor professionals. With 17 years of lending experience, Sally has broad-spectrum knowledge of every type of loan program inside and outside the box; as brokers, we have a wide array of loan options and lenders, so we can customize for each scenario. We truly improve the lives we touch!



GiGi Bonifacio, Pipeline Coordinator; Logan Roche, Transaction Coordinator; Sally Vance Kaizer, Branch Manager/Senior Loan Officer; Atticus, Wonder Dog; Samantha Ambroziak, Relationship Manager/Processor; Kristin Vance, Team Loan Officer; Billie Vance, Events & Marketing Coordinator





# GALLERY ONE TWENTY



Terry Jane England, Owner



Gallery One Twenty is an intimate gallery space featuring an eclectic mix of styles and media, such as one-of-a-kind jewelry pieces by owner Terry Jane England and monumental bronze sculptures by Copper Tritscheller. Also represented is James Havard and Cleve Gray, both of whom have permanent pieces on display at the Guggenheim and Smithsonian. Plans for expansion of Gallery One Twenty are in the works, including an adjoining sculpture park/working studios, art classes and a second gallery.

GALLERY  
ONE  
TWENTY

120 Canal Street  
New Smyrna Beach  
galleryonetwenty.com  
386.410.4106





## MAITLAND CITY CENTRE

Maitland City Centre is near everything, including perfection. Our vibrant, walkable community is unlike any other, inviting you to immerse yourself in an amenity-rich environment complete with on-site restaurants and high-end retail offerings, a rooftop pool and lounge, and unrivaled common spaces. Our luxuriously modern one- and two-bedroom apartment homes are the perfect respite from the ordinary. With private offices and co-working spaces, we provide a true live/work/play environment not previously found in Central Florida.

190 Independence Ln  
residencesatmaitland.com  
407.599.6600



Randy Pritchard,  
President

**PROforma**  
Results Group  
PROMOTIONS  
PRINTING  
DIRECT MAIL  
VIDEO  
DESIGN  
111 N Orange Ave  
Ste 800  
855.957.3785

## PROFORMA RESULTS GROUP

Proforma Results Group provides the latest trends in promotional products, commercial printing and direct mail. Randy Pritchard — along with his team, Carol Mills, Deb McConnell, and Georgia Lee Stuart — have worked together for more than 20 years and have built one of the most experienced group of professionals in the industry. Creating fresh ideas that break through today's digital clutter is what makes Proforma stand out in the marketplace.







108 E Canton Ave  
407.539.0425



## RIEKER SHOES

Rieker Shoes was founded in 1874 in Germany and is proud to open its first U.S. flagship retail boutique in beautiful Winter Park. Rieker, along with Remonte, provides style, quality and comfort right out of the box. We feature women's and men's shoes, boots, sandals, socks, and handbags for adults who want both fashion and comfort.







## EXHIBITION

### Shifting Gaze: A Reconstruction of The Black & Hispanic Body in Contemporary Art from the Collection of Dr. Robert B. Feldman

OCT 19, 2018–JAN 13, 2019

The 25 internationally renowned artists gathered in this exhibition have all drawn upon art history, American history, and popular culture to create powerful works that, independently and collectively, present a broad range of concepts about identity, beauty, belonging, and poignant issues of race.

The Mennello Museum of American Art, owned and operated by the City of Orlando, is located on beautiful Lake Formosa in Loch Haven Cultural Park.

# THE MENNELLO MUSEUM OF AMERICAN ART

**TOP:** Vaughn Spann, *Slip and Slide* (McKinney Pool Palette), 2018. Courtesy of the artist and Fredericks & Freiser, New York. Collection of Dr. Robert B. Feldman. **RIGHT:** Mickalene Thomas, *I'm not the Woman You Think I am*, 2010 © Mickalene Thomas. Courtesy of the artist and Susanne Vielmetter Los Angeles Projects. Collection of Dr. Robert B. Feldman. Photo by Robert Wedemeyer. **OPPOSITE:** Ebony G. Patterson, *... He*, 2016. Courtesy the artist and Monique Meloche Gallery, Chicago. Collection of Dr. Robert B. Feldman.



Loch Haven Cultural Park  
900 E Princeton St  
407.246.4278

  
THE MENNELLO MUSEUM  
OF AMERICAN ART  
 CITY OF  
ORLANDO





# STARLING CADILLAC



## SERVICE VALET

We pick up and deliver customer vehicles for service anywhere in the Central Florida area.

[starlingcadillac.com](http://starlingcadillac.com)

## 386.490.8932

2800 S Woodland Blvd  
DeLand, FL 32720

## SALES

Mon-Fri 9am-8pm  
Sat 9am-7pm

## SERVICE

Mon-Fri 7am-6pm  
Sat 8am-3pm

©2016 General Motors. All Rights Reserved. Cadillac®





# DR. SCOTT ROTATORI

A NATURAL CHOICE

800 W Morse Blvd #5  
scottrotatori.com  
407.628.5476

Meet the team at the office of Dr. Scott Rotatori, M.D., voted Best Cosmetic and Plastic Surgeon in Orlando. Dr. Rotatori and our entire world-class team of professionals will help you turn back time without advanced surgery. We use a host of different fillers and injectables, as well as Cutera Laser Skin Treatments, to make you look and feel younger and more beautiful. Skin care is our specialty, and we offer the latest technology to provide amazing results in a short period of time.







## WINTER PARK SCENIC BOAT TOUR

Discover Winter Park by water. Board a comfortable pontoon boat for a narrated tour of the city's waterfront, cruising through scenic canals lush with local flora and fauna, and lakes graced by grand estates and historic landmarks such as Rollins College, Kraft Azalea Gardens and the Isle of Sicily. Boats depart each hour from 10 a.m. to 4 p.m. daily.



312 E Morse Blvd  
scenicboattours.com  
407.644.4056

## ANTHROS INC.

Headquartered in Downtown Winter Park, Anthros Inc. is a human resources firm with local, national and international clients.

Our clients are leaders in their industries. Chef-owners nominated for James Beard Awards. Law firms known for winning landmark cases.

Health-care facilities that set the standard for care while operating across multiple states. Our vision is to empower our clients to become the best in their industry and build a legacy by serving as their long-term partner in human resources.



Anurag Dandiya, Founder



400 W Morse Blvd, #203  
anthrosinc.com  
407.502.0200



# THE MAYFLOWER RETIREMENT COMMUNITY

LOCATION.  
LOCATION.  
*Perfection!*



Gracious hospitality. Fine dining. Elegant amenities. And a community of friendly, fascinating people to share good times with.

This is The Mayflower. And living here is like being on a permanent vacation at a luxury retirement resort – with one very big perk: the guarantee of onsite quality long-term care.

Call today to learn more. And bring a friend!



**THE MAYFLOWER**  
Winter Park's Distinctive Retirement Community



1620 MAYFLOWER COURT | WINTER PARK, FL 32792  
407.672.1620 | [THEMAYFLOWER.COM](http://THEMAYFLOWER.COM)

88141 PRAD PWP 9/2018



# INDEX

## SHOPPING & THINGS TO DO

Be On Park Fine Jewelry	2	Francesco's	41	Golden Oak Club	55
Current	8	Hamilton's Kitchen	1, 18	Lou Supowitz	86
Eileen Fisher	11	Hillstone	24	Maitland City Centre	98
Gallery One Twenty	96	Kilwins Chocolate	39	Monark Home Kitchen Appliance	44
John Craig	9	Publix Aprons Cooking School	36	Morrone Interiors	68
Monark Home Kitchen Appliance	44	The Briarpatch	38	Nasrallah Architectural Group	70
My Urban Lodge	53	The Glass Knife	20	Nicole Howell & Leslie Heimer	91
Ocean Blue Galleries	BACK COVER	The Ravenous Pig	22	Pat Collado	94
Orlando Science Center	40	UMI	16	Phil Kean Design Group	66
Rieker Shoes	100	Winter Park Village	90	Phil Kean Real Estate	78
Rifle Paper Co.	48			Premier Realty Partners	93
SEE Eyewear	12			The Bagby Team	83
Shooz	50			Wendy Williams Crumit	89
Starling Cadillac	104			Winter Park Land Co.	85
The Ancient Olive	33				
The Partridge Tree Gift Shop	92				
The Spice & Tea Exchange	32				
TUNI	84				
Winter Park Scenic Boat Tour	108				
Winter Park Village	90				

## ART & MUSEUMS

Beau Wild, Artist	74		
Cornell Fine Arts Museum	46		
Gallery One Twenty	96		
Mark Pulliam, Artist	72		
Orlando Museum of Art	60		
The Mennello Museum of American Art	102		

## HOME & REAL ESTATE SERVICES

Anne Rue Interiors	71		
Berkshire Hathaway	113		
Certified Mortgage Planners	95		
Charles Clayton Construction	64		
Cindy Kuykendall	77		
Ethan Allen	73		
Fannie Hillman + Associates	80		

## DINING & DESSERTS

310 Park South	26		
1921 by Norman Van Aken	28		
Arthur's Catering	42		
Barnie's CoffeeKitchen	43		
blu on the Avenue	26		
Chef Bob Aungst	34		

## HOTELS

The Alford Inn	1, 18
----------------	-------

## HEALTH, SPA & BEAUTY

Advanced Park Dental	54
Atomic Barber	52
Dr. Scott Rotatori	106
Dr. Ruth Yeilding	56

## PROFESSIONAL SERVICES

Anthros Human Resources	109
Park Maitland School	88
Proforma Results Group	99
The Mayflower	110



"I would want to be associated with somebody where the financial strength was unquestioned and where the name stood for integrity. What other quality would you want that Berkshire Hathaway HomeServices does not have; and I don't think you could find one."

- Warren Buffett  
Chairman and CEO Berkshire Hathaway Inc.



**BERKSHIRE HATHAWAY**  
HomeServices  
Florida Realty

**LUXURY**  
COLLECTION™

Visit our Winter Park location at  
515 W. Morse Blvd. | Winter Park, FL 32789 | 407.406.5300

42 locations throughout Florida | [www.BHHSFloridaRealty.com](http://www.BHHSFloridaRealty.com)

Ⓜ A member of the franchise system of BHH Affiliates, LLC





ABOVE

**Top Left:** Oryan **Top Right:** Alexei Butirskiy  
**Bottom Left:** Michael Cheval **Bottom Right:** Stephen Harlan



202 Park Ave S • [www.oceanblue.gallery](http://www.oceanblue.gallery) • 321.295.7317