

SHOPPING • DINING • ARTS • HOME DESIGN

PASSPORT

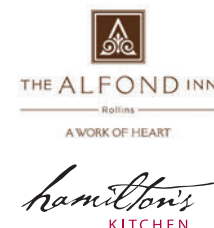
WINTER PARK





THE ALFOND INN & HAMILTON'S KITCHEN

Just a short stroll from Park Avenue, The Alfond Inn is Winter Park's premier boutique hotel, blending warm hospitality with local flair. Your furry friends will feel right at home too, as the inn's Very Important Pup (VIP) program welcomes dogs of all sizes. Owned by Rollins College, the hotel donates all net operating income to the school's premier scholarship program. Hamilton's Kitchen delivers Southern fare with a modern twist, fusing locally sourced ingredients with the open-table charm of a bygone era. Elegant guestrooms and superior service round out the one-of-a-kind guest experience.



TheAlfondInn.com
300 E New England Ave
(407) 998-8089



Above: The Be On Park Team

BE ON PARK

FINE JEWELRY

Be On Park's philosophy is that jewelry should be loved, worn and enjoyed every day. Expecting the extraordinary, the discerning shopper will recognize exclusive collections such as Elizabeth Locke, JB Star, Penny Preville, Roberto Coin, Gurhan, Jane Taylor, Todd Reed, Ippolita, Goshwara, Ray Griffiths, Monica Rich Kosann and Hermès watches. Throughout the store, you will find many one-of-a-kind, must-have treasures.



BeOnPark.com
TheDefinitive.com
152 Park Ave S
(407) 644-1106



JB Star



Elizabeth Locke Jewels



Mike



Jenn



Lori



Audrey



Zach



Jon

Betsy



SPRING/SUMMER 2021 • VOL.17

PASSPORT WINTER PARK

As we celebrate seven years of publishing our luxury guide, so much has changed. From restaurants and boutiques to museums and galleries, small businesses have met unthinkable challenges and are starting to thrive again. The real estate market is booming locally and across the state, including new home constructions and renovations as we continue to make our homes our sanctuaries now and for the foreseeable future. This is creating exciting opportunities for updated décor, refreshed interiors, and new art for your walls. Our second gallery — Park Avenue Contemporary Art — is opening in May, showcasing acclaimed artists like Winter Park icon Barbara Sorensen whose *Ripples Installation* adorns this issue's back cover. With deep roots in the community, Passport understands the ebbs and flows of success in an area driven so much by walking traffic. A new day is dawning as we come together to meet this moment and work to keep Winter Park strong and poised for growth.



Denise Autorino
Founder/Publisher

Julio Ballesteros
DIGITAL ART DIRECTOR

Lori Barbely
PHOTO EDITOR

Michael Bessire
CREATIVE DIRECTOR

Betsy Hansen
STAFF PHOTOGRAPHER

Jennifer Pileggi
ASSOCIATE ART DIRECTOR

Audrey St. Clair
EDITOR

Zach Stovall
STAFF PHOTOGRAPHER

Jon Whittle
STAFF PHOTOGRAPHER

PassportLuxuryGuides.com

COVER ARTIST MARC FISH



Marc Fish has long been fascinated with the natural world. Whether by conceiving new materials or rewriting old methods, he is uniquely fueled by the ambition to bend a material to his will to achieve his ultimate vision. His signature use of the best timbers and veneers combined with his understanding of metal fabrication and attention to detail set him apart from the standard craftsman. Fish's sublime, sumptuous works possess a timelessness that enables them to sit comfortably in the most contemporary of settings alongside the more traditional. While embracing curvilinear forms reminiscent of Art Nouveau, he simultaneously pushes the boundaries of 21st-century art and design. In Fish's *Ethereal* series (pictured above and gracing our cover), he uses a revolutionary material that allows light to pass through frosted resin, creating the mesmerizing effect of a constantly shifting, illuminated surface. ToddMerrillStudio.com • COVER PHOTO: NATHAN PERKEL



COCINA 214

Cocina 214 is an award-winning contemporary Mexican and Tex-Mex restaurant featuring authentic, fresh, high-quality fare. The menu combines bold flavors with the freshest local ingredients to create exceptional Tex-Mex served in a vibrant, elegant setting.

Cocina214.com
151 E Welbourne Ave
(407) 790-7997

COCINA 214
Mexican Kitchen & Bar

IN THIS ISSUE

Epic Eats 06-28

Things To Do 30-37

The Arts 38-49

Home Design 50-81



EPIC EATS

A DINING TOUR
OF WINTER PARK

Throughout the past decade, Winter Park has grown into a foodie destination lauded for its superstar chefs who are dishing up some of the country's most innovative cuisine. The following seven pages reveal a sampling of their culinary creations, from artfully handcrafted sushi rolls to from-scratch brunch classics with a new twist. Carnivores, vegans, seafood fanatics, and sweet tooths alike will discover an epicurean experience in Winter Park that will leave them longing for more.



LEFT Managing partner Tim Noelke and executive chef/partner Brandon McGlamery are at the helm of Park Lights Hospitality, the powerhouse group behind two of Winter Park's most popular restaurants, Prato and Luke's Kitchen and Bar. **RIGHT** Delicately prepared fish, fresh salads, and refreshing cocktails are among the top draws at Luke's.





ABOVE Only fresh, sustainably sourced fish is on the menu at The Ravenous Pig, the flagship restaurant of James Beard-nominated duo James and Julie Petrakis. **BELOW FROM LEFT** Jumbo shrimp and mussels tossed with handmade fettuccine at Francesco's Ristorante; Hillstone's signature grilled heirloom artichokes, served with housemade remoulade, are grown from root stock passed down by Italian immigrants.

ABOVE BoVine Steakhouse's signature 22-ounce bone-in ribeye pairs well with a glass of Sequoia Grove cabernet sauvignon from Napa Valley. **BELOW** Tuna tartare layered with avocado and topped with ginger vinaigrette at Financier Bistro & Bar à Vin, where sous chef Téo Lemaire and executive chef Théo Goupil also create French classics like croque monsieur and to-die-for eclairs.



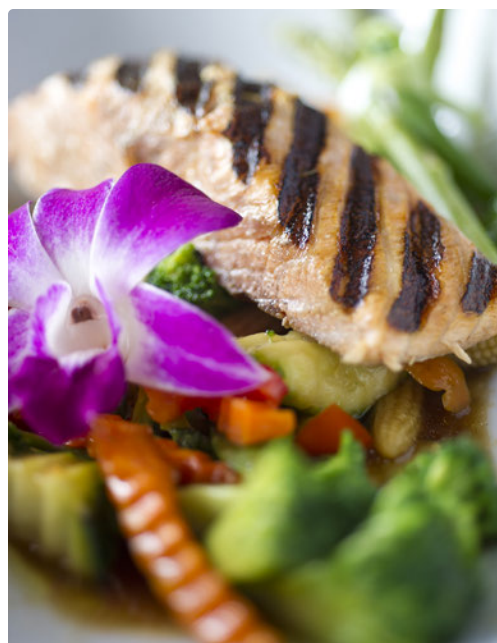


OPPOSITE FROM TOP LEFT Veggie pizza made from homemade dough at Rome's Flavours; Umi's spicy tuna roll dressed with kobachi sauce; blu on the Avenue's house-smoked Norwegian salmon chips; Belgian waffle topped with vanilla mascarpone, Nutella, and fresh strawberries at the Briarpatch. **FROM RIGHT** Signature Sprinkle buttermilk brioche donuts from The Glass Knife; restaurateur JoAnne McMahon and executive chef Tony Krueger of 310 Park South; blu's lobster cobb salad wrapped in prosciutto di parma.





ABOVE Wesley DeSouza, food and beverage manager, and executive chef Stephen Doyle oversee operations at The Alford Inn's Hamilton's Kitchen, where surf 'n' turf is served with Creekstone prime filet mignon.
BELOW FROM LEFT Orchid Thai's salmon ginger salad with cashews, topped with crisp eggplant and drizzled with homemade ginger dressing; handcrafted triple-scoop gelato from Peterbrooke Chocolatier.



FRANCESCO'S

RISTORANTE • PIZZERIA

We are in this together and committed to serving our customers safely during these challenging times. In authentic Italian tradition, we select our simple, whole ingredients and combine them by hand with heart, using the time-honored method of open-flame cooking. From handmade mozzarella to artisanal pizzas, pastas and salads, we have a passion for quality and pride in our product that we know you'll appreciate. Reservations suggested.



Francescos-Rist.com
 400 S Orlando Ave, #104
 (407) 960-5533

BEER GARDEN VIBES



Q This has been the hardest year for the restaurant industry in modern history. How did you adapt?

A On top of maintaining a safe and clean environment for our staff and guests, we've made a huge effort to stay connected within our community. We've made ordering more accessible by adding our online store and curbside pickup.

Q What was your inspiration for the new beer garden? What stands out about your concept?

A We like to visit beer gardens when we're in Asheville and wanted to bring something similar here. We imagined a large outdoor area focused on our beers in an environment that reflected our characteristic laid-back, casual style. We also wanted a space where we could host fun events like trivia, live music, and movie nights.

Q What's involved in your brewing process?

A To brew a great beer, we start with reverse-osmosis filtered water, the best malts we can find, and very strict standards for our signature process that we've developed over the years. And there are a few extra bells and whistles in our new 15-barrel system.

Q What are some good food and beer pairings?

A Beer can go places other beverages can't. IPA is the most popular of all craft styles, and we



always have two on tap — a more traditional West Coast style and a hazy New England hops. IPA really brings out the bleu cheese on our pub burger and goes great with our teriyaki wings. Our Belgian Saison du Cochon is a home run with our housemade charcuterie board, and the Lone Palm Golden Ale is awesome with all things seafood. What's cool is that our beer and food menus are always changing, so there's always an opportunity for a new pairing.

Q What are the benefits of small-batch production?

A Beer is made to be drank fresh. It's a living, unpasteurized beverage. Commercial breweries are consistent, but they just can't deliver the experience smaller breweries can. It's like the difference between buying a loaf of bread at the grocery store versus an artisan bakery.

Q What's on tap right now?

A Some of our year-round brews include the Laid Up Lager, Foxtail Coffee Blonde, Trucks & Trains American pale ale, and Working Man Porter. Limited-release seasonal beers like the Lardermelon are perfect for spring and summer.

Q What's your favorite thing about the beer garden?

A Our basic philosophy is making delicious, clean beers. It takes hard work and integrity not to chase fads. You don't have to wait in line for our beers. We want friends and families to relax and really enjoy themselves.



THE RAVENOUS PIG

James Beard-nominated chef duo James and Julie Petrakis are at the helm of this critically acclaimed restaurant, serving inspired, sustainable food prepared using ingredients sourced in Florida. The Ravenous Pig offers an extensive menu ranging from traditional pub fare to house-made pastas, fresh seafood and creative desserts. In addition to seasonal cocktails and a sommelier wine list, the Ravenous Pig Brewing Co. craft beer is brewed on-site and poured in the newly minted outdoor Beer Garden. Lunch, brunch and dinner available for dine-in and takeout.



TheRavenousPig.com
565 W Fairbanks Ave
(407) 628-2333





FINANCIER BISTRO & BAR À VIN

Park Avenue or Paris? Financier Bistro & Bar à Vin takes you on a unique voyage to France right here in Winter Park. Named the maker of NYC's best croissant, executive chef Théo Goupil and his team bring the finest in French cuisine to the avenue — from delicate bites to multi-course feasts both savory and sweet. Come for lunch, brunch, or dinner ... and stay for dessert, a glass of wine, or one of our signature wine-based cocktails. This chef-driven bistro has one secret ingredient: love. And you can taste it in every bite.

•FINANCIER•

FinancierBistroBar.com

212 Park Ave N
(321) 972-2284



Téo Lemaire, Sous Chef; Théo Goupil, Executive Chef/General Manager

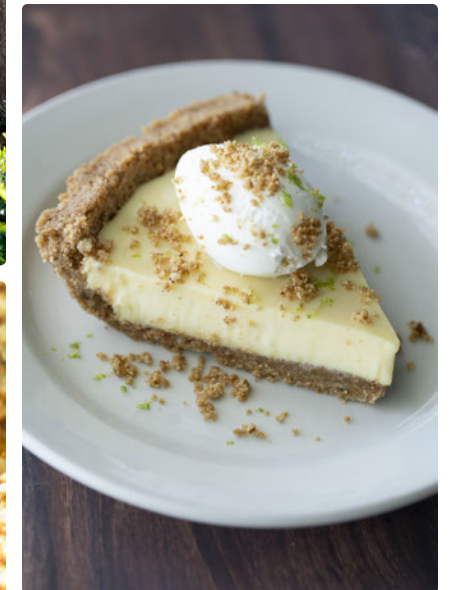


Théo Goupil, Executive Chef/General Manager; Danielle Goupil, Manager



HILLSTONE

SERVING
WINTER PARK
WITH PRIDE
AND GOOD FOOD
SINCE 1996



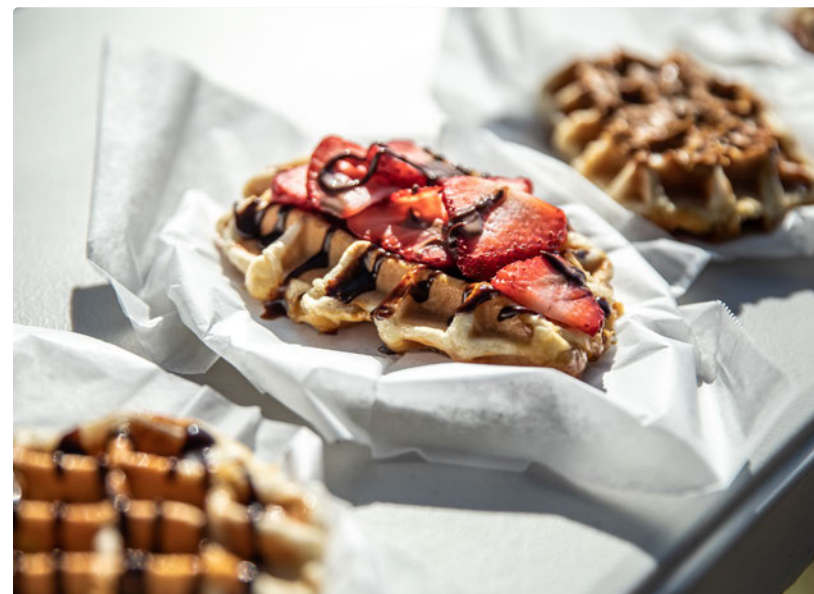
HILLSTONE

Hillstone.com
215 S Orlando Ave
(407) 740-4005

FARM FRESH

WINTER PARK FARMERS MARKET • EVERY SATURDAY

Fresh-pressed lemonade. Exotic produce and artisan bagels. Jars of raw local honey in enticing flavors like cinnamon and key lime. These are just a few of the unique offerings on tap at the Winter Park Farmers Market, where dozens of local vendors showcase their goods and wares every Saturday from 7 a.m. to 1 p.m. For decades, locals and visitors alike have flocked to the market on New England Avenue to grab everything from just-cut wildflowers and fresh-made crepes to vegan baked goods and heirloom veggies. Don't forget to grab a bag of irresistible kettle corn to munch on as you stroll through the stands. CityofWinterPark.com





THE GLASS KNIFE



Whether you seek sweet or savory, we're serving the moments you love. With coffee and cuisine from classic to casual, stop in for breakfast, lunch or weekend brunch — even a romantic nightcap for two. And don't forget decadent cakes, elegant desserts and specialty sweet treats that are perfect for any occasion.

TheGlassKnife.com
276 S Orlando Ave
(407) 500-CAKE



LUKE'S KITCHEN AND BAR



Luke's Kitchen and Bar is the third concept of Park Lights Hospitality Group, led by visionary chef Brandon McGlamery and operations maven Tim Noelke. We are a neighborhood restaurant delivering culturally and community-inspired dishes driven by our unique take on American cuisine. Our trusted team delivers carefully curated oysters, a raw bar, an array of soups and sandwiches, and entrees cooked over an open-fire grill and rotisserie.

LUKE'S
KITCHEN AND BAR

EatAtLukes.com
640 S Orlando Ave, Maitland
(407) 674-2400



PRATO

Celebrating cuisine from Italy's rich culinary landscape, Prato seamlessly blends Italian classics with modern techniques and seasonal ingredients. The warm space welcomes guests with its rustic-chic elements, including a long bar, which encourages a vibrant, communal atmosphere. With its window-paned doors and year-round patio seating, Prato emphasizes the "park" of Park Avenue.

Prato-WP.com
124 Park Ave N
(407) 262-0050



THE ANCIENT OLIVE

Gourmet Foods
Serving/Cutting Boards
Cheese/Charcuterie
Luxury Candies



TheAncientOlive.com
324 Park Ave N
(321) 972-1899



THE SPICE & TEA EXCHANGE

Over 55 of the world's finest loose-leaf teas. Hundreds of spices and herbs. 85-plus custom spice blends made in-store.



SpiceandTea.com
309 Park Ave N
(407) 647-7423



Linda Files, Owner

THE 62nd WINTER PARK SIDEWALK ART FESTIVAL

Join us in downtown Winter Park, May 14-16, 2021
For more info or to become a patron, visit our website at wpsaf.org

POSTER BY VICTOR BOKAS



THE WINTER PARK
SIDEWALK ART FESTIVAL
MAY 14-15-16-2021

62nd



WINTER PARK SCENIC BOAT TOUR

Discover Winter Park by water. Board a comfortable pontoon boat for a narrated tour of the city's waterfront, cruising through scenic canals lush with local flora and fauna and lakes graced by grand estates and historic landmarks such as Rollins College, Kraft Azalea Gardens, and the Isle of Sicily. Boats depart each hour from 10 a.m. to 4 p.m. daily.



ScenicBoatTours.com
312 E Morse Blvd
(407) 644-4056



RIEKER SHOES

Rieker Shoes was founded in 1874 in Germany and is proud to open its first U.S. flagship retail boutique in beautiful Winter Park. Rieker, along with Remonte, provides style, quality and comfort right out of the box. We feature women's and men's shoes, boots, sandals, socks, and handbags for those who want both fashion and comfort.

108 E Canton Ave
(407) 539-0425





Joshua McNeeley, Store Manager,
and Tate Fox, Social Media
Manager/Clothing Consultant



H. Craig DeLongy,
Founder; Blair DeLongy,
VP of Retail Operations



Cheryl Arbutine, Manager; Denise Tellis, Store Manager; Debbie
Mitchell, Clothing Consultant; Alan Chambers, Director of Operations

CURRENT

Current reshapes the typical shopping experience by creating a true lifestyle boutique that is simultaneously exciting and comfortable for our visitors. The store contains a varied selection of innovative fashion presented in a laid-back setting. Current's devotion to fashion coexists within a selection of luxury men's designer collections; we strive to carry well-constructed fashions from the most prominent and latest designers to give our clients individuality. We provide our clients the highest level of service in style assessment, alterations, personal shopping, and special ordering.

current
BY JOHN CRAIG

CurrentMen.com
128 Park Ave S
(407) 628-1087



JohnCraigClothier.com
132 Park Ave S
(407) 629-7944

JOHN CRAIG

In 1996, the first John Craig retail location opened on Park Avenue with the goal of offering the best selection of high-end men's clothing, accessories, and footwear. Our mission is to provide exceptional, timeless menswear for the sophisticated man along with individualized and unparalleled customer service. The Winter Park store continues to achieve industry-wide recognition on The Esquire Retail 100, a prestigious list recognizing America's finest menswear specialty stores. Men come to John Craig for the clothes, and they keep coming back for the experience.



PARK PLAZA HOTEL

The Park Plaza Hotel is an intimate boutique hotel built in 1922 and famous for its romantic atmosphere, personal service, and genuine hospitality. The hotel lobby oozes vintage elegance, and cozy, one-of-a-kind rooms offer views overlooking historic Park Avenue and the Central Park Rose Garden. Many of the rooms feature elegant balcony gardens where guests can enjoy their complimentary continental breakfast. Whether you're visiting for a few days or settling in for a longer stay, our full-service hotel promises you a friendly and relaxing home away from home.



ParkPlazaHotel.com
307 Park Ave S
(407) 647-1072



dear jane
FOR YOU AND YOURS

DearJaneWinterPark.com
329 Park Ave N, #105
(407) 951-8890



DEAR JANE BOUTIQUE



Winter Park's *dear jane* is here to bring you the ultimate shopping experience. Located on the north end of Park Avenue, this trendy boutique offers the ultimate in feel-good shopping, from high-end exclusives to everyday collections of apparel, jewelry, gifts, loungewear, and bath splurges for you and yours. *dear jane* is more than just a store — it's an unforgettable experience in a chic and trendy space.

MARTHA JO MAHONEY

ARTIST

Martha Jo grew up in Orlando and then returned after studying fine arts at the University of Florida. She is now finally living her dream of creating art at her studio, McRae Art Studios, where she has been painting for many years. Her works have been placed into many significant national and international collections. She is currently represented by Be On Park in Winter Park, and studio visits are available by appointment.

MarthaJoMahoney.com
(407) 718-9888



ABOVE Louis Freund, *House on One-Way Street (St. Augustine)*, no date, oil on board
RIGHT William Wofford, *Bill and Julie's*, 1995, watercolor on paper, 22¼ x 35¼ in.



MUSEUM OF ART DELAND

Celebrating our 70th anniversary, the Museum of Art DeLand enriches the community through its dedication to the collection, preservation, exhibition, and study of the fine arts.



MoArtDeLand.org
100 & 600 N Woodland Blvd
DeLand
(386) 734-4371



MOKE AMERICA ORLANDO

Fun, easy, electric! What began as a military invention for the British army in the late 1950s quickly became an open-air must-have for the easy, breezy island lifestyle of celebs like Brigitte Bardot. Today's modern Moke is an eco-friendly, electric, street-legal vehicle perfect for whisking to the farmers market or "moking" around your favorite beach town. Reaching a top speed of 25 mph, the fully customizable Moke comes in 12 vibrant colors, plugs into any outlet, and can run up to 40 miles on a single charge.



MokeAmericaOrlando.com
4225 Millenia Blvd
(407) 283-3117

CORNELL FINE ARTS MUSEUM

The area's premier teaching museum features rotating exhibitions, ongoing programs, and an extensive permanent collection with works also on view at The Alford Inn at Rollins. Free admission for 2021 courtesy of PNC Financial Services Group.



EXHIBITIONS

**Art Encounters:
Community or Chaos**
ONGOING

**2021 Senior Student
Exhibition**
APR 10 – MAY 9, 2021

2021 Faculty Exhibition
APR 10 – SEPT 5, 2021

**Multiple Voices/
Multiple Stories**
MAY 20 – SEPT 5, 2021

**Path to Paradise: The
Artistic Legacy of
Dante's Divine Comedy**
MAY 20 – SEPT 5, 2021

**Uptown/Downtown:
Richard Lindner's Fun City**
MAY 20 – SEPT 5, 2021

Rollins
Cornell Fine Arts
Museum

Art Bridges

PNC

CULTURE
BUILDS
FLORIDA
FLORIDA DEPARTMENT OF STATE
HONORARY CHAIRMAN: GUY CARLTON

Arts & Cultural
Affairs
FLORIDA DEPARTMENT OF STATE
HONORARY CHAIRMAN: GUY CARLTON

@cfamrollins
1000 Holt Ave
(on Rollins campus)
(407) 646-2526



TOP Richard Lindner (American, b. Germany, 1901-1978), *Uptown* (from *Fun City*), 1971, Lithograph and collotype, 25½ x 19½ in. Gift of Mr. and Mrs. Robert L. Gardner. 1983.32.7 © Richard Lindner/Artists Rights Society (ARS), New York **ABOVE RIGHT** Kim Dingle (American, b. 1951), *Tomato bisque - Restaurant Mandala*, 2012/2020, Oil on canvas, Diptych: 90¼ x 60½ in. The Alford Collection of Contemporary Art at Rollins College, Gift of Barbara '68 and Theodore '68 Alford. 2020.1.26 © Kim Dingle **ABOVE LEFT** Math Bass (American, b. 1981), *Newz!*, 2019, Gouache on canvas, 84 x 42 in. The Alford Collection of Contemporary Art at Rollins College, Gift of Barbara '68 and Theodore '68 Alford. 2017.6.52 Image courtesy of the artist and Tanya Leighton, Berlin **OPPOSITE LEFT** Yinka Shonibare (British, b. 1962) *Athena* (after Myron), 2019, Fiberglass sculpture, handpainting with Batik pattern and steel base plate, 82¾ x 35¾ x 27¾ in. The Alford Collection of Contemporary Art at Rollins College, Gift of Barbara '68 and Theodore '68 Alford. 2019.2.17 © Yinka Shonibare/Artists Rights Society (ARS), New York **OPPOSITE TOP RIGHT** After Frans Pourbus the Younger (Flemish, 1569-1622), *Portrait of Marguerite de Valois*, ca. 1610, Oil on panel, 13¾ x 11 in. Gift of Mr. and Mrs. Everett M. Myers in memory of John C. Myers, Sr. 1962.4 **OPPOSITE BOTTOM RIGHT** Tom Peterson (American, 1930-2018), *The Divine Comedy*, 2001, Oil on canvas, 77 x 82 in. Donated by the family of Tom Peterson. 2019.5.



ARTS ON DOUGLAS



**Atlantic Center for
the Arts Downtown**
123 Douglas St, New Smyrna Beach
(386) 428-1133
Gallery Hours: T-F 10-5, SAT 10-4

Arts on Douglas, now celebrating its 25th anniversary, promotes the work and careers of professional Florida artists. Since 1996, the gallery has worked with hundreds of artists, opened over 350 exhibitions, and placed thousands of works of art in private and corporate settings across Florida and the U.S. The ongoing exhibition program features a broad spectrum of styles, media, and temperaments, including experimental genres in its alt_space gallery. New exhibitions open the first Saturday of every month. Artwork can be previewed and purchased online at artsondouglas.net.

EXHIBITIONS

Riitta Klint: Intangible
APR 3 - 24, 2021
Opening reception: Saturday,
April 3, 4-7 PM; ACA Downtown,
Arts on Douglas, feature gallery

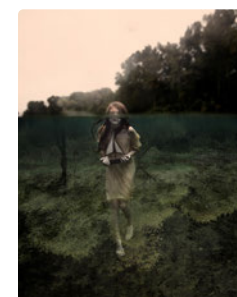
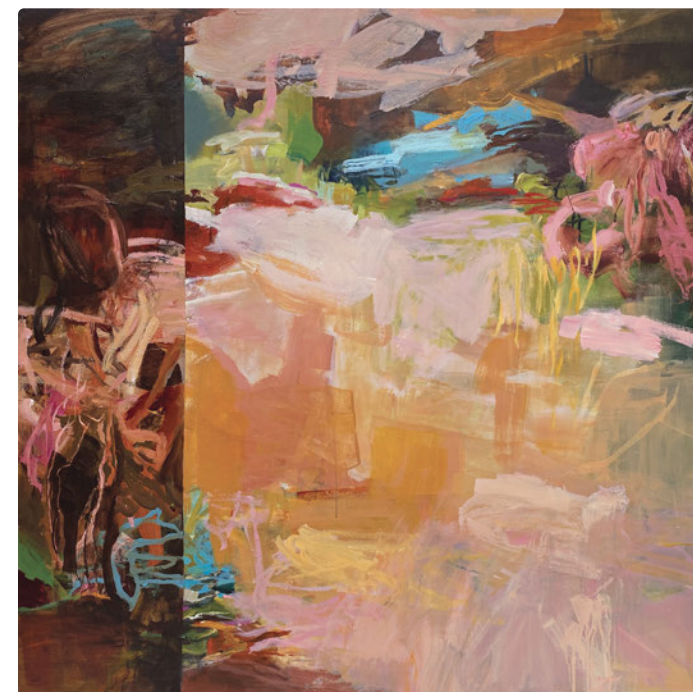
**Audrey Phillips:
Impermanence**
MAY 1 - 29, 2021
Opening Reception:
Saturday, May 1, 4-7 PM
Artists Talk: Friday, May 28,
11 AM; ACA Downtown, Arts
on Douglas, feature gallery

**Erika Masterson:
Mystery of Water**
MAY 1 - JUN 12, 2021
Opening Reception:
Saturday, May 1, 4-7 PM
Artists Talk: May 7, 11 AM;
ACA Downtown, Arts on
Douglas, alt_space gallery

**Past Perfect
Exhibition + Sale**
JUN 5 - JUL 24, 2021
Opening Reception: Saturday,
June 5, 4-7 PM; ACA Downtown,
Arts on Douglas, feature gallery

**Lenny Foster:
Where We Stand**
JUL 3 - AUG 14, 2021
Opening Reception:
Saturday, July 3, 4-7 PM
Artists Talk: Friday, July 16, 11
AM; ACA Downtown, Arts on
Douglas, alt_space gallery

**Endless Summer:
A Group Exhibition**
AUG 7 - 28, 2021
Opening Reception:
Saturday, August 7, 4-7 PM
ACA Downtown, Arts on
Douglas, feature gallery



TOP Audrey Phillips,
Almost Forgotten,
acrylic on canvas, 48 x
48 in. **ABOVE LEFT** Erika
Masterson, *Life Boat*,
photograph, 20 x 24 in.
ABOVE RIGHT Lenny
Foster, *The First School*,
photograph, 17 x 26 in.
LEFT Gallery view featuring
artwork by Christine
Peloquin, 2016 **OPPOSITE**
alt_space exhibition by
Jan Tomlinson Master,
Natural Philosophy, 2018.



EXHIBITIONS

**The Grand Portraits
of Eddy Mumma**
APR 23 – AUG 1, 2021

**Floating Beauty: Women
in the Art of Ukiyo-e**
AUG 13 – NOV 7, 2021

**Marilyn L. Mennello
Sculpture Garden**

**Alice Aycock:
Twisted Vortex &
Waltzing Matilda**
ONGOING

LEFT Mr. Eddy Mumma
(American, 1908-1986), *Untitled*
(Statue of Liberty after Van
Gogh's Sunflowers), n.d. Acrylic
on canvas board. Collection
of the Mennello Museum of
American Art, Gift of Josh
Feldstein, 2015-001-002.

BELOW Mr. Eddy Mumma
(American, 1908-1986), *Untitled*
(The Afghan Girl, National
Geographic 1985), n.d. Acrylic
on canvas board. Collection
of Mennello Museum of
American Art, Gift of Josh
Feldstein, 2015-001-001a,b.

MENNELLO MUSEUM OF AMERICAN ART

Mennello Museum of American Art celebrates large-scale sculpture on Lake Formosa year-round. This spring the museum presents *The Grand Portraits of Eddy Mumma*, an iconic folk artist from our permanent collection. Opening in August is *Floating Beauty: Women in the Art of Ukiyo-e*, a stunning collection of Japanese prints from the Reading Public Museum in Reading, Pennsylvania.



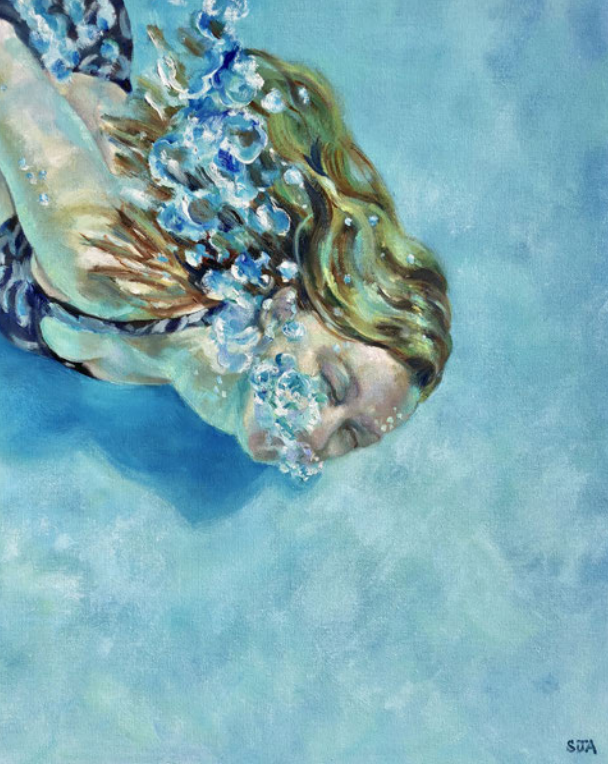
ABOVE Katsushika Hokusai
(Japanese, 1760-1849), *The
Great Wave off the Coast
of Kanagawa*, 1830-1831, ink
on paper, 10 x 14½ inches,
Museum Purchase, 1930.388.1.
Reading Public Museum,
Reading, Pennsylvania.
LEFT Kitagawa Utamaro
(Japanese, 1753-1806),
*Courtesan Hanaogi in Ogiya
with Attendant*, 18th century,
ink on paper, 14¾ x 10¼ inches,
Museum Purchase, 1928.30.1.
Reading Public Museum,
Reading, Pennsylvania.



MENNELLO MUSEUM
OF AMERICAN ART



Loch Haven Cultural Park
900 E Princeton St
(407) 246-4278



PASSPORT FINE ART GALLERY

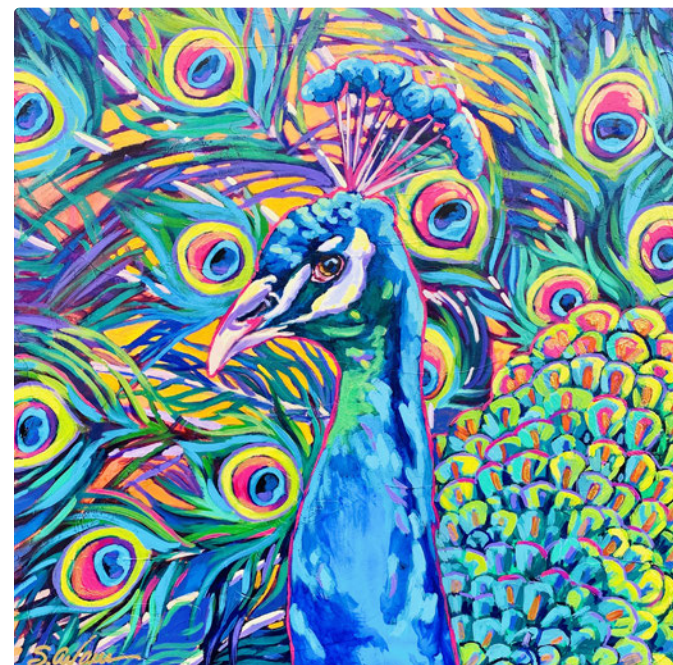
ICONIC WINTER PARK



Located adjacent to the historic Park Plaza Hotel, our boutique art gallery features some of the best painters in Central Florida such as Tom Sadler, Sally C. Evans, Susan Anderson, Stacy Barter, and Orit Reuben. From peacocks to Park Avenue, these acclaimed artists capture the heart of our beloved city. Our gallery has become a favorite stop on your shopping tour and the perfect place to find your very own piece of Winter Park to take home with you.

PASSPORT
FINE ART GALLERY

PassportFineArt.com
307 Park Ave S
(407) 233-7305



OPPOSITE FROM TOP
LEFT *Underwater*,
Susan Anderson;
Wading, Orit Rueben;
Peacock Fountain,
Stacy Barter FROM
TOP *Wekiva Jungle*,
Tom Sadler; *Royal
Blue*, Sally C. Evans



PARK AVENUE CONTEMPORARY ART



Step into the world of contemporary art to start building your collection. Opening May 2021, the brand-new Park Avenue Contemporary Art (PACA) gallery features award-winning artists such as Barbara Sorensen, Ericka Sobrack, Rock Demarco, John Dumas, The Collazo Collection, Marlene London, and Nicholas Kalemba, to name a few. In addition to art sales, PACA will offer consulting services on how to start an art collection and execute a professional installation.

ParkAvenueContemporaryArt.com
348 Park Ave S
(407) 233-7305



OPPOSITE CLOCKWISE FROM TOP LEFT *Blue Nirvana*, John Dumas; *Spring Break*, Marlene London; *Pure Love X*, The Collazo Collection CLOCKWISE FROM TOP *Ripples in White*, Barbara Sorensen; *Poodle Sundae*, Victor Bokas; *Departure*, Ericka Sobrack.



THE ART OF FURNITURE SCULPTURE

For more than 20 years, artist Marc Fish has been crafting one-of-a-kind pieces of furniture that continue to push the boundaries of 21st-century design and transcend the standards of art, furniture, and sculpture. His sublime, sumptuous works possess an almost hypnotic fluidity because of the innovative materials and techniques he has created and mastered. Fish employs practices in micro stack-lamination using only the finest veneers and natural finishes — from gold to squid ink — making him a craftsman for the ages whose sublime designs are at once contemporary and traditional.



FROM LEFT *Ethereal Series Lounge Chair*, UK, 2019, sycamore, acrylic, 28 x 26 x 34 in.; *Ethereal Bar and Drinks Cabinet*, UK, 2020, sycamore, acrylic; *Ethereal Small Low Table*, UK, 2020, sycamore, acrylic, 14½ x 51 x 23½ in.



ETHEREAL SERIES

In Fish's Ethereal Series, he mimics the delicacy of leaf structures with their complex system of midribs and veins. In an exploration to develop innovative techniques for combining resin with his signature wood laminations, Fish created a revolutionary material that allows light to pass through frosted resin in varying levels of light and dark. Reflected off the paper-thin wood veneers, the light takes on different shades as it's manipulated by the fluctuating spaces between the laminations. The resulting effect is that of a constantly shifting, illuminated surface that appears to float effortlessly through space.



STRATUM SERIES

Fish's *Stratum Resin Cabinet* takes inspiration from the layers of sedimentary rock, or strata, that form the Earth's surface. He colors and carves translucent cast resin to mimic the parallel layers of strata. Made entirely of resin, the design reflects Fish's desire to embrace a broader pallet of materials.

FROM TOP *Stratum Resin Cabinet*, UK, 2020, resin, 27½ x 67 x 16 in.; Marc Fish employs signature techniques in resin frosting and tinting, which produces mesmerizing visual effects such as sunlight passing through water currents or tree canopies. OPPOSITE FROM TOP *One Piece Low Table*, UK, 2017, walnut, aluminum, squid-ink ceruse finish, 19 x 62 x 40 in.; *Copper One Piece Console*, UK, 2020, resin, bleached and sandblasted oak with copper, 38 x 63 x 16 in.

ONE PIECE SERIES

Invention rather than inspiration is the genesis of the One Piece Series, where Fish draws on extraordinary techniques to explore the positive and negative space occupied by a single piece of wood. Each of the works begins as one board of wood that is shaved into hundreds of thin laminations. By stack-laminating the pieces together, Fish creates the primary shape of the artwork. It is then bent without heat, steam, or water to preserve the integrity of the wood before hand-sculpting it into its final form.





MIZNER TILE STUDIO

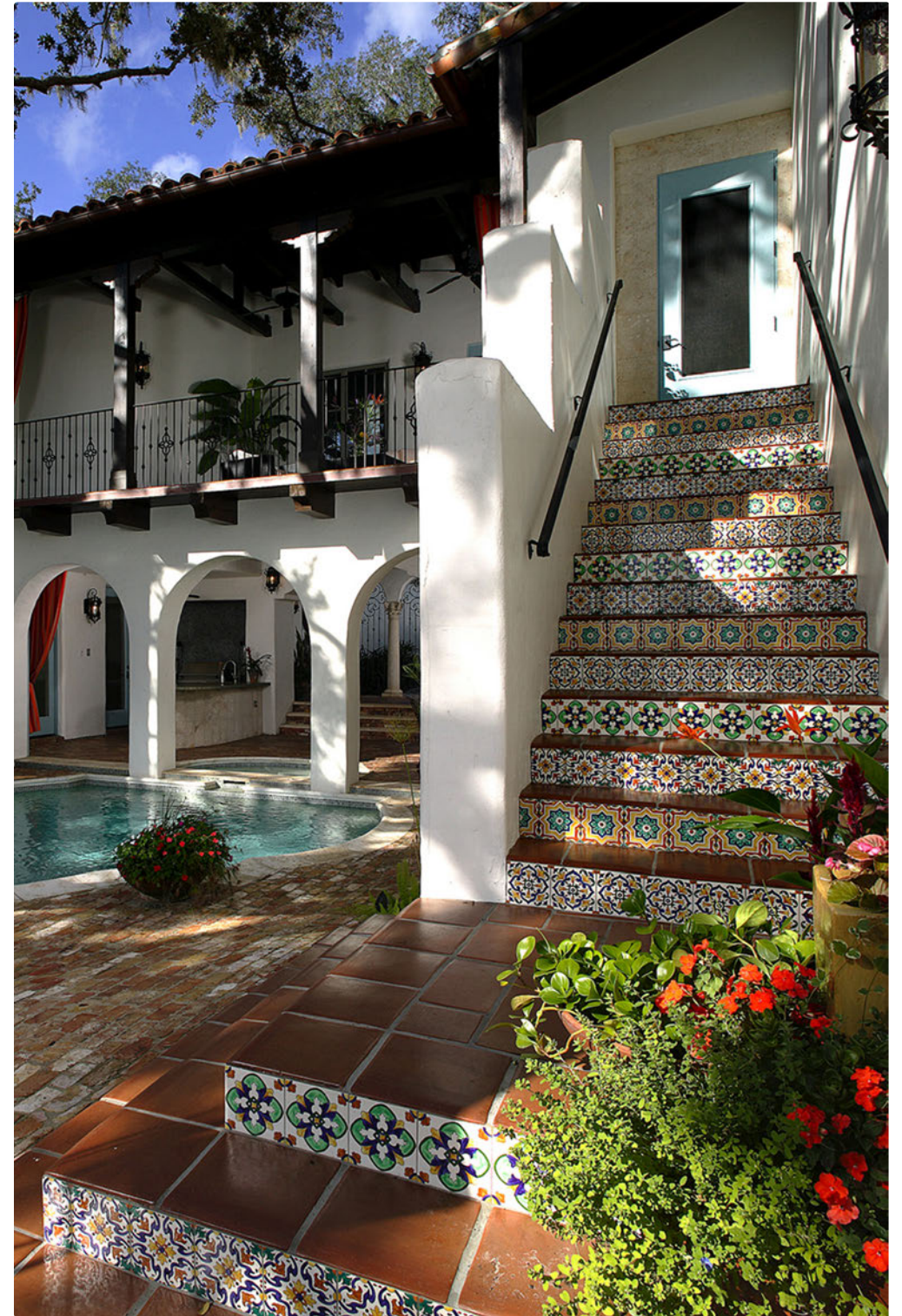


Mizner Tile Studio has quite literally carved out a niche in the custom tile industry, creating unique, high-quality designs inspired by Old World Mediterranean, Turkish, and Moorish craftsmanship. A boutique studio with a passion for personalized service, we collaborate directly with homeowners, interior designers, architects, and builders to create custom backsplashes, pools, fountains, stair risers, fireplaces, and more. Each tile we produce is meticulously handpainted, one by one, in our Winter Park studio.



MiznerTileStudio.com
768 Harold Ave, Suite A
(407) 951-5740

Brenda Lusher,
President





Charlie Clayton III,
Owner



CHARLES CLAYTON CONSTRUCTION

Charles Clayton Construction, Central Florida's premier custom homebuilder, specializes in one-of-a-kind new construction and home remodels while remaining committed to quality craftsmanship, community and family. A Winter Park resident, Charlie Clayton III and his family have been building homes throughout Central Florida and coastal Volusia for nearly 70 years. Please call us at (407) 628-3334 today to schedule a complimentary review of your upcoming project.



CharlesClayton.com
2250 Lee Rd, Suite 120
(407) 628-3334



PASSPORT WINTER PARK



Carlos Forato, Owner

SACCARO DESIGN HABITAT



Tradition is our territory. For almost 70 years we have been creating timeless furniture of the highest quality produced by our most valuable tool: human hands. Our 4,000-square-foot Winter Park showroom features a selection of Saccaro's signature indoor and outdoor collections, including Maori, Virtus, and Diamante, who draw inspiration from the life and landscapes of the Brazilian tropics. Raw materials, cutting-edge technology, and artisanal craftsmanship combine in each piece of Saccaro furniture to create distinctive, exclusive designs.

Saccaro-Orlando.com
499 W Fairbanks Ave
(407) 335-4441

saccaro®



CAPADOCIA SWING CHAIR | ROQUE FRIZZO

Saccaro Orlando
499 W Fairbanks Avenue - Winter Park, FL 32789 | 407 3354441
(Located next to Ravenous Pig)

saccaro®

70 stores around the world • www.saccaro-orlando.com

NEW AMERICAN HOME

IN THE HEART OF WINTER PARK, PHIL KEAN DESIGN GROUP DEBUTS THE 2021 NEW AMERICAN HOME, AN EXQUISITE THREE-LEVEL, SINGLE-FAMILY HOME SHOWCASING THE LATEST IN CONSTRUCTION, DESIGN, AND TECHNOLOGY.



Third-floor highlights include the chef's kitchen, which boasts a 9-foot-tall custom walnut and glass dish hutch, and the lighted floating staircase that connects the home's three levels. Oversize gridded windows blanket the sprawling space in the perfect amount of natural light.

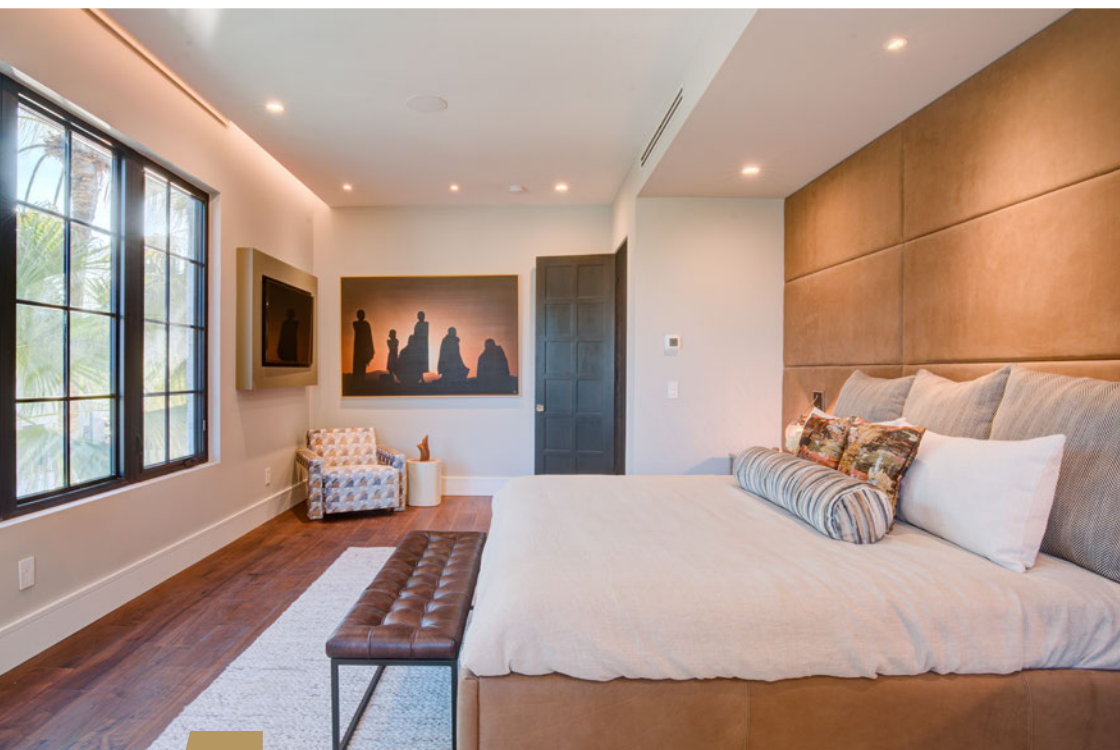


A modern masterpiece set amid towering treetops in downtown Winter Park, the 2021 New American Home offers luxury urban living at its finest. The three-bed, 4½-bath home boasts a unique inverted layout, with the main living areas located on the third floor, which features 14-foot ceilings, oversize gridded windows, and seamless outdoor living spaces.

With numerous ultra-energy-efficient components, this 5,536-square-foot, high-performance home was designed and built to be net zero and achieve emerald-level status from the National Green Building Standard. The home is also Energy Star certified and EPA Indoor airPLUS qualified.

Each of the three levels invites an experience all its own, with bright, colorful interiors intermixed with warm woods, the latest in smart-home technologies, and an assortment of high-end finishes. From the first floor's art gallery entrance and dedicated dog room to the second-floor master suite, complete with a steam room and fully outfitted exercise space, the New American Home stands as a testament to ease and function.

The top floor is quite literally the home's crowning achievement. A great room, music room, treetop terrace, and state-of-the-art chef's kitchen combine to create the ultimate in both relaxation and entertainment. tnah.com



5 FAVORITE FEATURES

Panasonic Cosmos Healthy Home System

This smart fresh-air system uses carefully placed sensors throughout the home to monitor the indoor air, adjusting automatically to ensure the ideal air quality.

Mitsubishi Ducted Mini-Split HVAC

The New American Home has no HVAC air-handler closets, freeing up living space and increasing energy efficiency. The ducted mini-split systems — which work in tandem with the Cosmos system — are located in the ceilings with drywall access panels for easy accessibility.

Smart-Home Status

The fully integrated Control 4 system allows you to control everything from

the lighting and music to climate, shades, and security through touch screens peppered throughout the home or via a smartphone app.

Digital Media and Audio

Ceiling speakers are installed on each floor, and high-definition LG OLED ThinQ televisions provide an unparalleled digital media experience. With an AV closet located in the center of the home, you never have to worry about a mess of cables cluttering up your sleek, inviting space.

Home Elevator

Connecting the home's three levels is a custom Garaventa home elevator that features premium three-speed sliding doors.

→ SEE THE 2021 NEW AMERICAN HOME DURING ORLANDO'S PARADE OF HOMES, JULY 10-11, JULY 17-18



PHIL KEAN DESIGN GROUP

ARCHITECTURE • CONSTRUCTION
INTERIOR DESIGN • KITCHEN REMODELS

Dedicated to service and excellence, our mission is to provide the complete solution for award-winning design and construction of architecturally distinctive spaces integrating the finest quality of products and services. Whether your tastes are modern or traditional, Phil Kean Design Group specializes in creating one-of-a-kind, luxury residences with extraordinary attention to design detail, sustainable construction, and seamless transitions of indoor and outdoor spaces.

Architecture by Phil Kean, LLC AA26002050 Phil Kean Designs, Inc. CRC1327855; PKD Studio, LLC ID6290



PhilKeanDesigns.com
912 W Fairbanks Ave
(407) 599-3922



Winter Park's Real Estate Experts

— FOR OVER 40 YEARS —



WELCOME
home

Founded in 1981 by Fannie Hillman, this independent, full-service residential real estate agency has served the community with integrity and quality customer service for over 40 years. **Fannie Hillman + Associates** is a trusted neighbor whose staff of licensed brokers and sales associates are actively involved in the local community.

Fannie Hillman + ASSOCIATES

205 W Fairbanks Ave • 122 S Park Ave • Winter Park, FL 32789
407.644.1234 • www.fanniehillman.com

Fannie Hillman
+ ASSOCIATES



PSG CONSTRUCTION

Named one of the country's top 50 remodelers, PSG Construction has been delivering masterful custom homes and renovations alongside exceptional customer service since 1987.



PsgConstruction.com
P.O. Box 3386
(407) 628-9660



Paul Gidus, Owner

SMALL MEETINGS

THE ALFOND INN

With large corporate gatherings being replaced by micro-meetings for 20 people or fewer, The Alfond Inn is seizing the opportunity to create spaces for intimate events. From C-suite board meetings to networking with clients, guests can choose from 10,000 square feet of dedicated meeting space and another 10,000 square feet of landscaped grounds and manicured gardens — both of which are perfect for comfortable social distancing while allowing for meaningful human interaction.



TheAlfondInn.com
300 E New England Ave
(407) 998-8090



TOP PRODUCERS REAL ESTATE PROFESSIONALS



JENNI SLOAN & PADGETT MCCORMICK

CLIENT FOCUSED RESULTS DRIVEN

- Over 40 years of combined residential real estate brokerage experience
- “Top-tier customer service, responsiveness, and local market mastery” — client testimonials
- Jenni and Padgett pride themselves on offering relevant and individualized marketing strategies

Jenni Sloan
Jenni@JenniSloanRealEstate.com
(407) 810-8333
www.jennisloanrealestate.com

Padgett McCormick
Padgett@TheResidential.net
(407) 929-5604
www.facebook.com/TheResidential





**AUTUMN
ART
FESTIVAL**

WINTER PARK
CHAMBER OF COMMERCE

kw WINTER PARK
KELLERWILLIAMS, REALTY

WinterPark.org/
Autumn-Art-Festival
October 9 & 10
9 AM – 5 PM
Central Park in
Downtown Winter Park



WINTER PARK AUTUMN ART FESTIVAL

Hosted by the Winter Park Chamber of Commerce, the Winter Park Autumn Art Festival is the only juried fine art festival exclusively featuring Florida artists. From visual arts and musical entertainment to children's art activities and a much-anticipated beer garden, this is outdoor family fun at its best.



KELLER WILLIAMS WINTER PARK LUXURY

Professionalism, experience, and knowledge set Keller Williams Winter Park Luxury agents apart. We are the luxury division of Keller Williams Realty, the largest and most productive real estate company in the world. Award-winning agents provide concierge experience for their clients while bringing them the marketing power of the world's largest real estate company. We are your luxury agents.

KELLERWILLIAMS
Luxury
INTERNATIONAL

kw WINTER PARK
KELLERWILLIAMS, REALTY

LuxuryWinterPark.com
147 W Lyman Ave
(407) 545-6430





A.CLORE INTERIORS



The team at A.Clore Interiors is driven by a deep passion to create a unique story from our clients' point of view. From interior design and styled decor to precise planning and project execution, A.Clore Interiors builds a personalized experience built on the business and principles of design. Founded in 2012 as a residential interior design studio, the Sanford-based company has evolved into a multifaceted lifestyle brand that is leading the interior design conversation with experience in residential, hospitality, and commercial markets. Each project includes a tailored mix of old and new with a focus on timeless over trend.



ACloreInteriors.com
116 S Palmetto Ave, Sanford
(407) 328-0370

Amber Clore, ASID,
CAPS, Owner



1830 Gipson Green Lane, Lake Maitland

THE BAGBY TEAM

YOUR LAKEFRONT
LIFESTYLE BEGINS
WITH US

Named Top Overall Producers at Fannie Hillman for 34 years, The Bagby Team brings integrity, competence, and generations of experience to both sides of the negotiating table. Whether you're moving in, moving out, moving up, or moving down, this family of realtors — whose track record includes over \$897 million in lifetime sales and \$20-plus million in lakefront sales this past year — knows life moves fast and embraces both the business and human sides of real estate.



THE BAGBY TEAM
A Family of Realtors

Fannie Hillman
+ ASSOCIATES

BagbyTeam@FannieHillman.com
122 Park Ave S • 205 W Fairbanks Ave
(407) 620-8868



Julie Bagby Williams,
Nancy Bagby and SueAnn Rand

PASSPORT WINTER PARK



BESPOKE FURNITURE

BY MORRONE INTERIORS

MorroneInteriors.com

784 Orange Ave, Ste 100

(407) 648-9090



Audrey Morrone,
Owner

BESPOKE FURNITURE

MORRONE INTERIORS

Audrey Morrone and her award-winning design firm, Morrone Interiors, believe in building client relationships through exceptional service and offering the finest in both product selection and interior design. Our new showroom on Orange Avenue, Bespoke Furniture, invites you to handpick pieces from a curated collection of furniture, lighting, accessories, and art designed by the likes of Bernhardt, Four Hands, and Regina Andrew as well as a selection of custom Morrone designs. Come shop with us! We know you'll find furnishings and decor as unique as you are.

corcoran

PREMIER REALTY



From L to R: Jenna Gomez, Drew Henner, Debbie Tassell, Jennifer King, Chocky Burks, Julie Bombardo, Wendy Henner, Rhonda Larabee

THE POWER OF A TEAM

WHY WORK WITH ONE AGENT WHEN YOU CAN HAVE THIS TEAM OF TOP AGENTS REPRESENTING YOU

You are important to us. We never send an Assistant to do our job. This Team of Top Selling Realtors is working for you. Team members/professional experienced Real Estate Agents, are always available to personally handle your every need.

Our number one priority is communication and high level negotiation skills to close deals.

Call Chocky today! 407-493-2748 | Chocky@CorcoranGroup.com



330 Spring Forest Drive, New Smyrna Beach

COLLADO REAL ESTATE

LUXURY COUNTRY ESTATES



An equestrian estate pool home professionally designed for Florida luxury living, this showplace is on just over 11 manicured acres within minutes of the beach yet blissfully blanketed in country tranquility and privacy. The porte-cochere entryway leads to a secluded interior courtyard that reveals an elegant formal entry to the 3-bedroom, 3½-bath main home and attached 1-bedroom, 1-bath guest suite. The sprawling master suite features his and hers vanities with hot-towel and refrigerated-beverage drawers, while the gourmet chef's kitchen boasts high-end appliances and a walk-in pantry. Alfresco amenities include a covered outdoor cook shack with brick pizza oven perfect for entertaining in the year-round Florida sunshine. Horse lovers will enjoy the handsome barn, separate pastures, and riding arena, complete with special footing and a large pond. Listed at \$1,750,000.

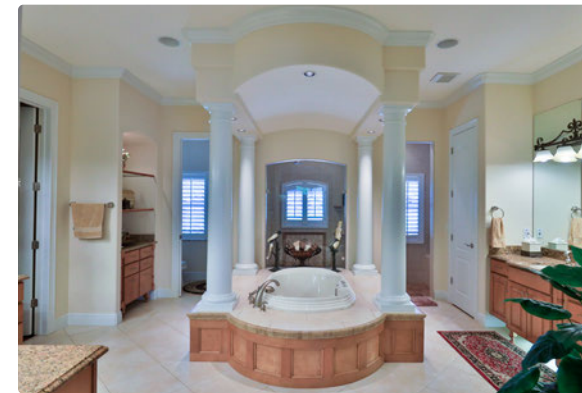
Pat Collado
ColladoRealEstate.com
 402 Flagler Ave
 New Smyrna Beach
 (386) 690-9999 (to buy)
 (386) 451-5564 (to sell)



Pat Collado Team
Collado Real Estate



On over two sprawling acres in DeLand, this luxury country estate offers the ultimate in privacy. In this 4-bedroom, 4-bath custom home with a 3-car garage, you'll find a game room, library, office, and walk-in closets in each bedroom along with an entertainment center featuring built-in lighting and pullout storage. Standout features include a saltwater pool with waterfall custom lighting, an outdoor summer kitchen, a detached RV garage, and beautifully landscaped brick-paver walkups throughout the fenced grounds. Listed at \$1,500,000.



980 Geryl Way, DeLand

At Bell Bank Mortgage, our purpose is to *help others.*

That means putting *your* best interests first – always – with:

- Highly competitive rates
- Wide variety of loan programs
- Award-winning service
- On-time closings

Every step of your financing is handled at Bell Bank Mortgage. Our in-house processes mean faster answers, fewer headaches and peace of mind.

Bell isn't like other mortgage firms – or banks. As an independently owned bank, we're able to do things differently. That means treating our customers how we want to be treated and putting people over profits.

Your loan is not just another deal to us. It's a dream of homeownership or the realization of a refinance.

Let us help guide you *home.*

RICHIE SLOAN

Senior Mortgage Banker
407.810.2475 MOBILE

www.richiesloan.biz
rsloan@bell.bank

243 W. Park Avenue | Suite 200
Winter Park, FL 32789

NMLS: #60032

Bell Bank
Mortgage

bellbankmortgage.com



KELLY PRICE
& COMPANY

KellyPriceand
Company.com
243 W Park Ave
(407) 415-0338



THE ART OF REAL ESTATE

LOU SUPOWITZ • TOP 10 PRODUCER

Living in Winter Park for over 25 years, Lou Supowitz has a distinguished record of public service to Central Florida through his involvement with philanthropic foundations and commitment to arts and culture. Orlando Mayor Glenda Hood honored him as the recipient of the Vision Award for Innovation. Lou's experience on both sides of real estate transactions makes the process seamless for all parties, while his unwavering work ethic and previous career in television and marketing set him apart.



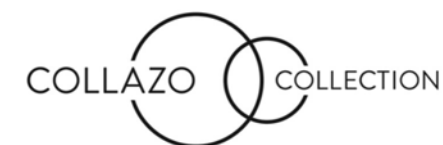
CLUB PILATES WINTER PARK

Recognized as Winter Park's Best Workout, Club Pilates Winter Park offers a core-based, low-impact, full-body workout. Come visit our studio to see all that we have to offer: great community, expert instructors, personal training, and quality athleisure attire. Let Club Pilates Winter Park become your Happy Place!

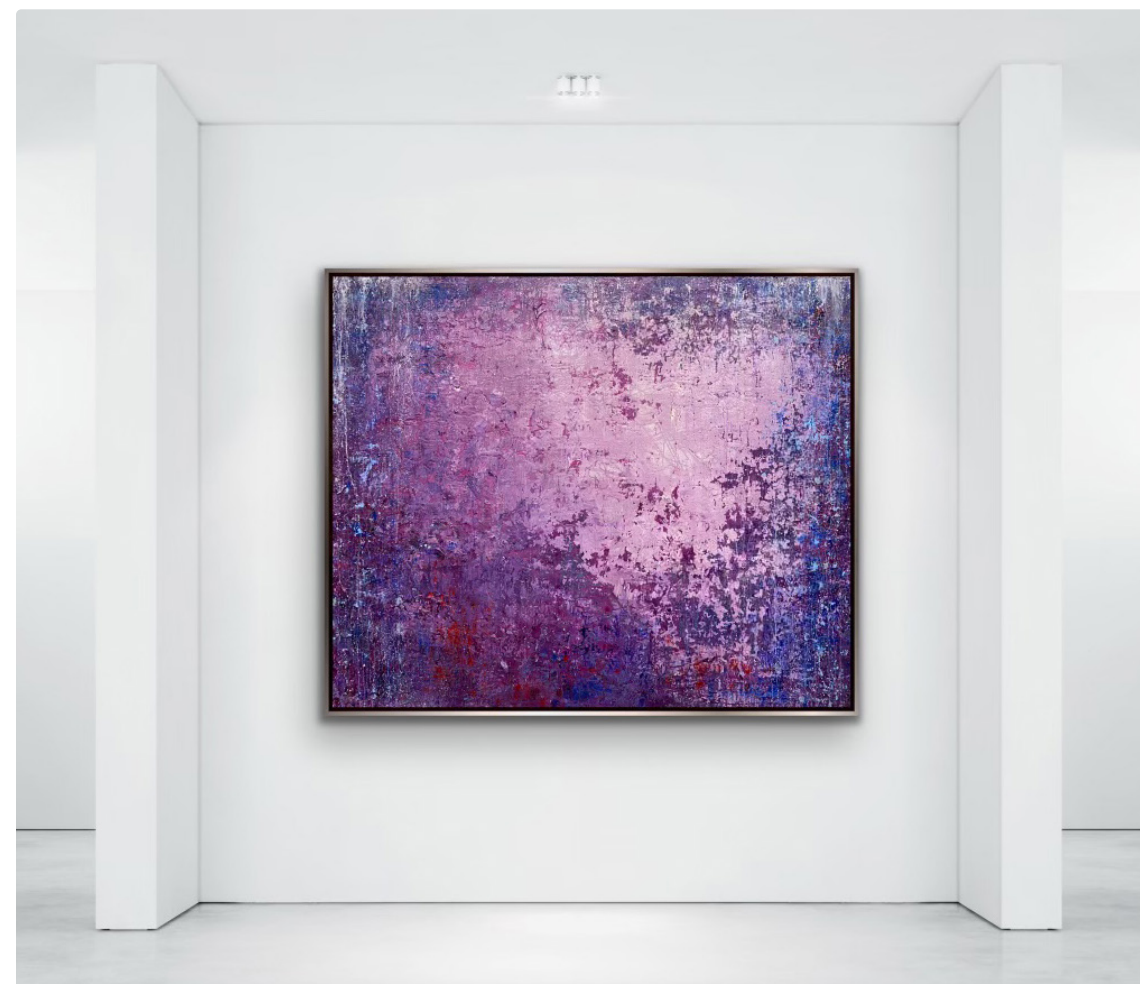


CLUB PILATES
WINTER PARK

ClubPilates.com/WinterPark
1222 N Orange Ave, Suite B
(407) 960-7042



CollazoCollection.com
@collazocollection
(321) 234-2279



Violet Light, 62 x 52 in., mixed media on fiber resin



START TODAY: ONLINE OR ON CAMPUS

Flexible learning options available

■ [Learn more at fullsail.edu](https://fullsail.edu)



CAMPUS & ONLINE DEGREE PROGRAMS



Music &
Recording



Games



Art & Design



Film & Television



Technology



Media &
Communications



Business



Sports



FULL SAIL
UNIVERSITY®

Whether you're attending classes online or on our Florida campus, at Full Sail you'll join a community of people united by the desire to learn through creating. If you've got a dream in entertainment and media, this is the place to make it happen.

3300 University Boulevard • Winter Park, FL

fullsail.edu

82
Financial aid available for those who qualify • Career development assistance • Accredited University, ACCSC
To review consumer disclosures, please visit fullsail.edu/gedt.

© 2020 FULL SAIL, LLC



UMI JAPANESE FUSION
525 Park Ave S
(407) 960-3993
UmiWinterPark.com



BERRI LYNN'S BOUTIQUE
326 Park Ave N
(407) 622-2229
Instagram: @berrilynnns



SHOOOZ
303 Park Ave N
(407) 647-0110
ShoozOnParkAve.com



ORCHID THAI
305 Park Ave N
(407) 331-1400
EnjoyOrchidThai.com



BOOK YOUR WEDDING TODAY!



INQUIRE ABOUT FULL MUSEUM ACCESS

Ample room including
19,000 sq. ft. of gallery space

Wedding party and guests
will delight in world-class art exhibitions

CURRENT EXHIBITIONS

*Florida Prize in Contemporary
Art 2021*
Jun. 4 - Aug. 29, 2021

*Louis Dewis: An Artists Life
in France*
On view through May 2, 2021

Contact us at facilityrentals@omart.org
407.896.4231 ext. 248

*Everyday People: Works by
James E. Ransom*
Aug. 7 - Oct. 31, 2021

*American Journey: Two
Centuries of Arts and Culture*
On view through Jan. 2, 2022

*The
Collection*
BRIDAL



Like us on Face Book. Follow us on Instagram. Explore our website at www.thecollectionbridal.com.
407.740.6003 301 North Park Avenue Winter Park Fl 32789.

RUTH HILL YEILDING, MD

Ruth Hill Yeilding, MD, is a double board certified Facial Plastic Surgeon super specialized in eye and face. Dr. Yeilding focuses exclusively on facial and neck rejuvenation. Her surgical specialties include her signature laser eyelid lift, facelifts, and CO2 laser resurfacing. Dr. Yeilding is known for her natural results and treats patients in an extraordinary caring manner, creating a highly positive patient experience.



YeildingMD.com
328 W Morse Blvd
1 (855) YMD-FACE
(407) 960-1000

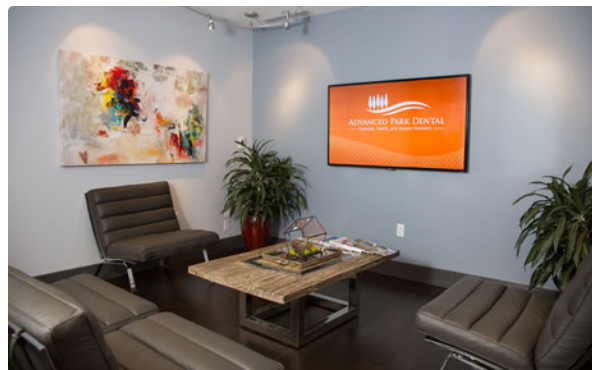




Dr. Mitesh Jivan, DMD, MPH

ADVANCED PARK DENTAL

Dr. Mitesh Jivan is passionate about maximizing your smile's potential. Advanced training allows Dr. Jivan to perform all dental procedures virtually from his boutique Park Avenue office — from cutting-edge dental surgeries (implants/micro-veneers) to routine dental cleanings. The latest modern technology, comfort amenities, and an individualized, patient-focused philosophy create a truly unique experience for the whole family. Dr. Jivan's expertise is in maintaining and constructing natural, untouched-looking smiles.



AdvancedParkDental.com
329 N Park Ave, #360
(Above Panera Bread)
(407) 628-0200



PRIVÉ SALON & SPA



Known for our award-winning team of cut and color specialists, Privé has been delivering a world-class customer service experience through honest communication, teamwork, and accountability for over a decade. You'll leave Privé with newfound confidence because our team of talented stylists executes each haircut, color, and style with personalized precision, unlocking the most beautiful version of yourself. At our brand-new Winter Park location, guests can indulge in Spa Privé, a spa room dedicated to providing the best skin-care treatments using the latest trends in technology.

PRIVÉ
SALON & SPA

PriveSalonOrlando.com
@Privesalon_Orlando
155 E New England Ave, #102
(407) 355-9229



ANTHROS INC.

Headquartered in Downtown Winter Park, Anthros Inc. is a human resources firm with local, national and international clients. Our clients are leaders in their industries. Chef-owners nominated for James Beard Awards. Law firms known for winning landmark cases. Health-care facilities that set the standard for care while operating across multiple states. Our vision is to empower our clients to become the best in their industry and build a legacy by serving as their long-term partner in human resources.



AnthrosInc.com
400 W Morse Blvd, #203
(407) 502-0200

Anurag Dandiya,
Founder





Enjoy specialty stores,
delicious restaurants,
luxurious salons,
the latest movies,
convenient grocery store,
loft apartment homes,
or sit by a sparkling fountain
and watch the world go by.
It's a one-of-a-kind destination.

shop, dine, unwind & live in style!



Winter Park Village



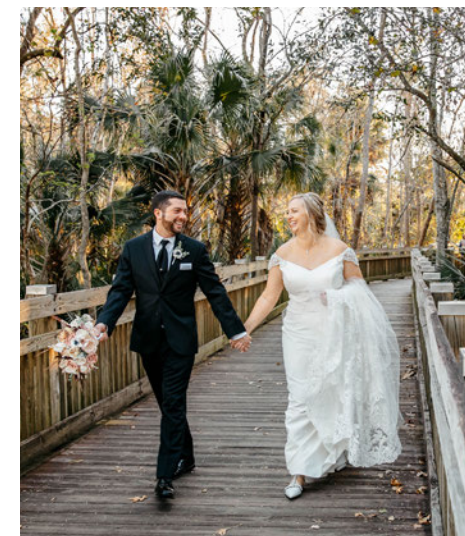
ShopWinterParkVillage.net
f t 407.571.2700 i



**ORLANDO
WATCH COMPANY**
329 Park Ave N, Ste 103
(407) 975-9137
OrlandoWatchCo.com



TUNI
301 Park Ave S
(407) 628-1609
ShopTuni.com



**LORI BARBELY
PHOTOGRAPHY**
(407) 401-9120
LoriBarbely.com



JIM FROST | REALTOR
224 Flagler Ave
New Smyrna Beach
(386) 299-9245
Jim@NSBRealtyTeam.com

● APPAREL

- 1 Bebe's & Liz's
311 S Park Ave
- 2 Berri Lynn's
326 N Park Ave
- 3 Charyl
400 S Park Ave
- 4 Current
128 S Park Ave
- 5 Dear Jane
329 N Park Ave
- 6 Forema Boutique
300 N Park Ave
- 7 John Craig Clothier
132 S Park Ave
- 8 Leonardo 5th Avenue
121 E Welbourne Ave
- 9 Lilly Pulitzer
114 N Park Ave
- 10 Lucky Brand Jeans
323 S Park Ave
- 11 Monkee's of Winter Park
444 W New England Ave, Suite 115
- 12 Sara Campbell Ltd
346 N Park Ave
- 13 Siegel's Winter Park
330 S Park Ave
- 14 Synergy
202 S Park Ave
- 15 The Grove
341 N Pennsylvania Ave
- 16 The Impeccable Pig
337 S Park Ave
- 17 Tugboat & The Bird
318 N Park Ave
- 18 Tuni
301 S Park Ave
- 19 Zingara Souls
208 N Park Ave

● BREWERY

- 1 The Winter Park Distillery
1288 N Orange Ave

● BUSINESS SERVICES

- 1 BKHM CPAs
1560 N Orange Ave
- 2 Felder Agency Farmers Insurance
225 W Canton Ave
- 3 Frog
114 S Park Ave
- 4 Larissa Humiston, LCSW
1414 Gay Rd
- 5 Leading Edge Title
243 W Park Ave
- 6 Moss, Krusick and Associates, LLC
501 S New York Ave
- 7 Swann, Hadley, Stump Dietrich & Spears
200 E New England Ave

● COLLEGES

- 1 Full Sail University
3300 University Blvd
- 2 Rollins College
1000 Holt Ave

● DINING

- 1 310 Park South
310 S Park Ave
- 2 4 Rivers Smokehouse
1600 W Fairbanks Ave
- 3 Barnie's Coffee Kitchen
118 S Park Ave
- 4 Black Bean Deli
1346 N Orange Ave
- 5 blu on the avenue
326 S Park Ave
- 6 Chez Vincent
533 W New England Ave

- 7 Cocina 214
151 E Welbourne Ave
- 8 Financier Bistro Bar à Vin
212 N Park Ave
- 9 Garp and Fuss
348 N Park Ave

- 10 Luma on Park
290 S Park Ave

- 11 Orchid Thai Cuisine
305 N Park Ave

- 12 Panera Bread - Park Ave
329 N Park Ave

- 13 Park Avenue Smoothie Cafe
400 S Park Ave

- 14 Power House Cafe
111 E Lyman Ave

- 15 Prato
124 N Park Ave

- 16 Proper & Wild
155 E Morse Blvd

- 17 San Julian's Coffee
110 S Orlando Ave

- 18 Sushi Pop Winter Park
115 E Lyman Ave

- 19 The COOP
610 W Morse Blvd

- 20 The Glass Knife
276 S Orlando Ave

- 21 The Imperial at Washburn Imports Winter Park
170 E Morse Blvd

- 22 The Parkview
136 S Park Ave

- 23 The Wine Room on Park Avenue
270 S Park Ave

- 24 UMI Japanese Restaurant
525 S Park Ave

- 25 The Grove
341 N Pennsylvania Ave

- 26 The Impeccable Pig
337 S Park Ave

- 27 Tugboat & The Bird
318 N Park Ave

- 28 Tuni
301 S Park Ave

- 29 Zingara Souls
208 N Park Ave

- 30 The Grove
341 N Pennsylvania Ave

- 31 The Impeccable Pig
337 S Park Ave

- 32 Tugboat & The Bird
318 N Park Ave

- 33 Tuni
301 S Park Ave

- 34 Zingara Souls
208 N Park Ave

- 35 The Grove
341 N Pennsylvania Ave

- 36 The Impeccable Pig
337 S Park Ave

- 37 Tugboat & The Bird
318 N Park Ave

- 38 Tuni
301 S Park Ave

- 39 Zingara Souls
208 N Park Ave

- 40 The Grove
341 N Pennsylvania Ave

- 41 The Impeccable Pig
337 S Park Ave

- 42 Tugboat & The Bird
318 N Park Ave

- 43 Tuni
301 S Park Ave

- 44 Zingara Souls
208 N Park Ave

- 45 The Grove
341 N Pennsylvania Ave

- 46 The Impeccable Pig
337 S Park Ave

- 47 Tugboat & The Bird
318 N Park Ave

- 48 Tuni
301 S Park Ave

- 49 Zingara Souls
208 N Park Ave

- 50 The Grove
341 N Pennsylvania Ave

- 51 The Impeccable Pig
337 S Park Ave

- 52 Tugboat & The Bird
318 N Park Ave

- 53 Tuni
301 S Park Ave

- 54 Zingara Souls
208 N Park Ave

- 55 The Grove
341 N Pennsylvania Ave

- 56 The Impeccable Pig
337 S Park Ave

- 57 Tugboat & The Bird
318 N Park Ave

- 58 Tuni
301 S Park Ave

- 59 Zingara Souls
208 N Park Ave

- 60 The Grove
341 N Pennsylvania Ave

- 61 The Impeccable Pig
337 S Park Ave

- 62 Tugboat & The Bird
318 N Park Ave

- 63 Tuni
301 S Park Ave

- 64 Zingara Souls
208 N Park Ave

- 65 The Grove
341 N Pennsylvania Ave

- 66 The Impeccable Pig
337 S Park Ave

- 67 Tugboat & The Bird
318 N Park Ave

- 68 Tuni
301 S Park Ave

- 69 Zingara Souls
208 N Park Ave

- 70 The Grove
341 N Pennsylvania Ave

- 71 The Impeccable Pig
337 S Park Ave

- 72 Tugboat & The Bird
318 N Park Ave

- 73 Tuni
301 S Park Ave

- 74 Zingara Souls
208 N Park Ave

- 3 Lauren Sigman Collection
341 N Pennsylvania Ave
- 4 Orlando Watch Company
329 N Park Ave

● MEDIA

- 1 Winter Park Publishing Company, LLC
201 W Canton Ave

● MUSEUMS & CULTURE

- 1 Albin Polasek Museum & Sculpture Gardens
633 Osceola Ave
- 2 Axiom Fine Art
268 W New England Ave
- 3 Bach Festival Society of Winter Park
124 N Park Ave
- 4 Morse Museum of American Art
445 N Park Ave
- 5 Ocean Blue Galleries
202 N Park Ave
- 6 Passport Fine Art Gallery
307 S Park Ave
- 7 Scenic Boat Tour
312 E Morse Blvd
- 8 The Winter Park Playhouse
711 N Orange Ave
- 9 Winter Park History Museum
200 W New England Ave

● REAL ESTATE

- 1 Beyond Commercial *
175 Lookout Pl
- 2 C Brenner Inc
3586 Aloma Ave
- 3 Fannie Hillman & Associates
122 S Park Ave
- 4 Fannie Hillman + Associates
205 W Fairbanks Ave
- 5 Keller Williams Winter Park
147 W Lyman Ave
- 6 Kelly Price & Company
243 W Park Ave
- 7 Owens Realty Services *
1646 33rd St
- 8 Palmano Group Real Estate Brokerage
444 W New England Ave
- 9 Premier Sotheby's International Realty
233 W Park Ave

● RELIGIOUS

- 1 All Saints Church of Winter Park
338 E Lyman Ave
- 2 San Pedro Spiritual Development Center *
2400 Dike Rd

● SHOES

- 1 Rieker Shoes
108 E Canton Ave
- 2 Shooooz On Park Ave
303 N Park Ave

● SPECIALTY

- 1 Brandywine Square
400 N Park Ave
- 2 Christian Science Reading Room
322 N Park Ave
- 3 e-tennis
2145 W Fairbanks Ave
- 4 Follett Bookstore at Rollins College
200 W Fairbanks Ave

- 5 frank
119 E Morse Blvd
- 6 Fred Astaire Dance Studios *
1400 Howell Branch Rd
- 7 My Urban Lodge
444 W New England Ave
- 8 One Florida Bank
531 W Morse Blvd, Suite 100
- 9 Partridge Tree Gift Shop
316 S Park Ave
- 10 Plante Design
141 Lincoln Ave
- 11 Rifle Paper Co.
558 W New England Ave
- 12 Ten Thousand Villages
329 N Park Ave
- 13 The Seamstress
1143 N Orange Ave
- 14 The Shade Store
204 N Park Ave
- 15 The Spice & Tea Exchange
309 N Park Ave
- 16 The Woman's Club of Winter Park, Inc
419 S Interlachen Ave
- 17 Williams-Sonoma
142 S Park Ave
- 18 Writer's Block Bookstore
316 N Park Ave

● SWEETS

- 1 Gelato-go Orlando
513 S Park Ave
- 2 Kilwins Chocolates & Ice Cream
122 N Park Ave

● TRAVEL

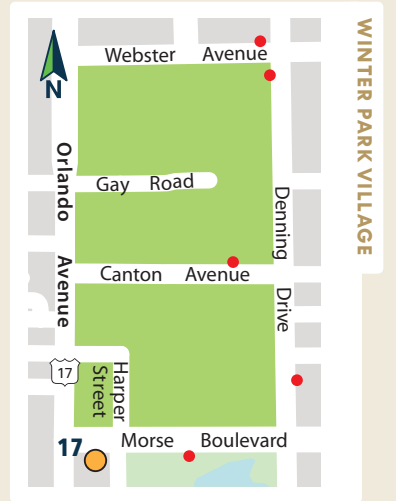
- 1 Luxury Trips
190 E Morse Blvd

● WEDDINGS

- 1 The Collection Bridal
301 N Park Ave

● INSTAGRAMMABLE SPOTS

- 1 AdventHealth
200 N Lakemont Ave
- 2 Casa Feliz
656 N Park Ave
- 3 City Hall
401 S Park Ave
- 4 Cocina 214
151 E Welbourne Ave
- 5 Grenada Court
118 S Park Ave
- 6 Hilton Garden Inn
1275 Lee Road
- 7 Mead Botanical Garden
1300 S Denning Dr
- 8 Morse Museum of American Art
445 N Park Ave
- 9 Rollins College Rose Garden
1000 Holt Ave
- 10 The Alford Inn at Rollins
300 E New England Ave
- 11 The Glass Knife
276 S Orlando Ave
- 12 The Winter Park Distilling Company
1288 N Orange Ave
- 13 Winter Park Chamber of Commerce
151 W Lyman Ave
- 14 Winter Park Farmers' Market
200 W New England Ave
- 15 Winter Park Train Station
148 W Morse Blvd



INDEX

SHOPPING

Be On Park Fine Jewelry	2	Umi Japanese Restaurant	83	Keller Williams Luxury Division	71
Berri Lynn's Boutique	83	Winter Park Village	92	Lou Supowitz, Kelly Price & Co.	79
Bespoke Furniture	74			Phil Kean Design Group	64
Current	34	ART + THINGS TO DO		PSG Construction	68
Dear Jane Boutique	37	Arts on Douglas	42	Saccaro Design Habitat	58
John Craig	35	Collazo Collection	81	Sloan & McCormick, Kelly Price & Co.	69
Mizner Tile Studio	54	Cornell Fine Arts Museum	40	The Bagby Team, Fannie Hillman + Associates	73
Moke America Orlando	39	Martha Jo Mahoney, Artist	38		
Orlando Watch Co.	93	Mennello Museum of American Art	44		
Rieker Shoes	32	Museum of Art DeLand	38	HOTELS	
Saccaro Design Habitat	58	Orlando Museum of Art	84	The Alford Inn	1,68
Shooz	83	Park Avenue Contemporary Art	48	Park Plaza Hotel	36
The Ancient Olive	29	Passport Fine Art Gallery	46		
The Collection Bridal	85	Winter Park Autumn Art Festival	70	HEALTH, SPA + BEAUTY	
The Spice & Tea Exchange	29	Winter Park Sidewalk Art Festival	30	Advanced Park Dental	88
TUNI	93	Winter Park Scenic Boat Tour	31	Club Pilates Winter Park	80
Winter Park Village	92	Winter Park Village	92	Privé Salon & Spa	89
				Dr. Ruth Yeilding	86

DINING + DESSERTS

Cocina 214	6			PROFESSIONAL SERVICES	
Financier Bistro Bar à Vin	20	HOME + REAL ESTATE		Anthros Human Resources	90
Francesco's Ristorante & Pizzeria	15	A.Clore Interiors	72	Bell Bank Mortgage	78
Hamilton's Kitchen	1	Berkshire Hathaway	99	Full Sail University	82
Hillstone	22	Bespoke Furniture	74	Lori Barbely Photography	93
Luke's Kitchen and Bar	27	Charles Clayton Construction	56		
Orchid Thai	83	Collado Real Estate	76		
PRATO	28	Corcoran Premier Realty	75		
The Glass Knife	26	Fannie Hillman + Associates	66		
The Ravenous Pig	16-19	Jim Frost, NSB Realty Team	93		



"I would want to be associated with somebody where the financial strength was unquestioned and where the name stood for integrity. What other quality would you want that Berkshire Hathaway HomeServices does not have; and I don't think you could find one."

- Warren Buffett
Chairman and CEO Berkshire Hathaway Inc.



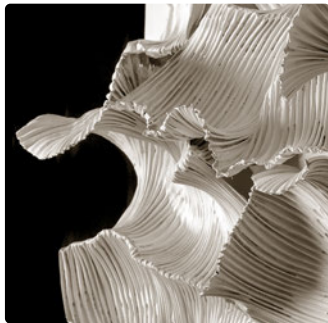
BERKSHIRE HATHAWAY
HomeServices
Florida Realty

LUXURY
COLLECTION

Visit our Winter Park location at
515 W. Morse Blvd. | Winter Park, FL 32789 | 407.406.5300

42 locations throughout Florida | www.BHHSFloridaRealty.com

A member of the franchise system of BHH Affiliates, LLC



Ripples Installation, Barbara Sorensen, 2016, aluminum, wood, and paint, 8½ x 11 x 1 ft.



348 PARK AVE S — WINTER PARK — 407-233-7305

ParkAvenueContemporaryArt.com