

SHOPPING • DINING • ARTS • HOME DESIGN

PASSPORT

WINTER PARK





THE ALFOND INN & HAMILTON'S KITCHEN

Just a short stroll from Park Avenue, The Alfond Inn is Winter Park's premier boutique hotel, blending warm hospitality with local flair. Your furry friends will feel right at home too, as the inn's Very Important Pup (VIP) program welcomes dogs of all sizes. Owned by Rollins College, the hotel donates all net operating income to the school's premier scholarship program. Hamilton's Kitchen delivers Southern fare with a modern twist, fusing locally sourced ingredients with the open-table charm of a bygone era. Elegant guestrooms and superior service round out the one-of-a-kind guest experience.



TheAlfondInn.com
300 E New England Ave
(407) 998-8089



Emily Williams, Owner, and Monkey Williams, Mascot

BE ON PARK

FINE JEWELRY

Be On Park's philosophy is that jewelry should be loved, worn and enjoyed every day. Expecting the extraordinary, the discerning shopper will recognize exclusive collections such as Kwiat, Suzanne Kalan, JB Star, Penny Preville, Roberto Coin, Elizabeth Locke, Monica Rich Kosann, Shy Creation, Pippo Perez, Hulchi Belluni, Mizuki, and Marika Desert Gold. Throughout the store you will find many one-of-a-kind must-have treasures.



Kwiat, Penny Preville, and Suzanne Kalan bangles



THE ART OF FINE DINING

AVA MEDITERRAEGEAN

Chef Michaël
Michaelidis



AVA MediterrAegean has opened to great acclaim as the first Riviera Dining Group venue after welcoming chef Michaël Michaelidis as Head of Culinary. Michaelidis brings a wealth of experience from his 12 years with the celebrated Robuchon Group and has earned a total of 26 Michelin stars for restaurants he led in his career. To execute Riviera Dining Group's culinary vision at the all-new AVA MediterrAegean, Michaelidis has appointed Keith Bombaugh, former sous chef at Alinea in Chicago, as Executive Chef. The two culinary connoisseurs have worked together to craft a menu that artfully captures the cuisine of the Mediterranean and Aegean coasts while creating fine-dining standards that diners have come to expect of Riviera Dining Group. AvaMediterrAegean.com





Mike



Lori



Julio



Audrey



Jenn



Scott

SPRING/SUMMER 2022 • VOL. 19

PASSPORT WINTER PARK

As publisher of PASSPORT WINTER PARK for over eight years and now an art gallery owner on Park Avenue, I'm truly living the Winter Park lifestyle. We live one block off Park Avenue, dine out at least three nights a week, and shop the many retailers and boutiques often. In this issue, we're celebrating local talents like photographer Merrell Builder Thompson, whose *Bird in the Box* photograph is on this issue's cover, and new local businesses like AVA MediterrAegean, which brings a three-star Michelin experience to Winter Park. In addition, you'll find features on art

collecting and art-design home packages, how best to enjoy a rocket launch on the Space Coast, and the top art exhibitions on display this summer in Florida. In the pages of PASSPORT WINTER PARK, you'll discover everything our local community has to offer.



Denise Autorino
Founder/Publisher

Julio Ballesteros
DIGITAL ART DIRECTOR

Lori Barbely
PHOTO EDITOR

Michael Bessire
CREATIVE DIRECTOR

Scott Cook
STAFF PHOTOGRAPHER

Jennifer Pileggi
ART DIRECTOR

Chadd Scott
CONTRIBUTING ARTS WRITER

Audrey St. Clair
EDITOR

PassportLuxuryGuides.com



Téo Lemaire, Sous Chef; Théo Goupil, Executive Chef/General Manager

FINANCIER BISTRO & BAR À VIN

FINANCIER

FinancierBistroBar.com
212 Park Ave N
(321) 972-2284

Park Avenue or Paris? Financier Bistro & Bar à Vin takes you on a unique voyage to France right here in Winter Park. Named the maker of NYC's best croissant, executive chef Théo Goupil and his team bring the finest in French cuisine to the avenue — from delicate bites to multi-course feasts both savory and sweet. Come for lunch, brunch, or dinner ... and stay for dessert, a glass of wine, or one of our signature wine-based cocktails. This chef-driven bistro has one secret ingredient: love. And you can taste it in every bite.



THE ANCIENT OLIVE

Fine, world-class gourmet products highlighted by the best Florida has to offer. Shop our award-winning olive oils, Italian balsamic, huge selection of olives, cheese and charcuterie, luxury candies, serving and cutting boards.



TheAncientOlive.com
324 Park Ave N
(321) 972-1899



THE RAVENOUS PIG

James Beard-nominated chef duo James and Julie Petrakis are at the helm of this critically acclaimed restaurant, serving inspired, sustainable food prepared using ingredients sourced in Florida. The Ravenous Pig offers an extensive menu ranging from traditional pub fare to house-made pastas, fresh seafood and creative desserts. This summer, turn your Tuesdays up a notch with our newly launched Tiki Tuesday bar menu. From the Florida Fling to the Pink Flamingo, your new favorite tropical drink awaits. Lunch, brunch, and dinner available for dine-in and takeout.



Josh Schaeffer,
Beverage Director



TheRavenousPig.com
565 W Fairbanks Ave
(407) 628-2333



THE WINE ROOM



A nine-time *Wine Spectator* "Best of" award winner, The Wine Room offers a unique combination of wine bar and retail shop, where buying and tasting wine is an interactive, memorable experience. Our state-of-the-art Enomatic dispensing system allows you to sample over 140 wines in 1-, 2.5-, or 5-ounce portions. Complement your wine or ice-cold craft beer with a selection of handcrafted meats and cheeses, or choose from one of our signature flatbreads or small plates. The Wine Room on Park Avenue is your guide to the delectable and delightful world of wine, bubbles, and brews — one taste at a time.



TheWineRoomOnline.com
270 Park Ave S
(407) 696-9463



WINDERWEEDLE, HAINES, WARD & WOODMAN, P.A.

History. Experience. Tenacity. Vision. These are the qualities that Winderweedle, Haines, Ward & Woodman, P.A. has brought to its clients in Winter Park and throughout Florida since 1931. Whether you need personalized services such as estate planning, tax advice, or assistance in real estate — or your legal needs relate to business matters, commercial real estate, banking, health care, or litigation — WHWW can deliver you quality advice, just as its attorneys do throughout the community every day. We would be honored to discuss your legal needs with you.

WHWW.com
329 Park Ave N, Second Floor
(407) 423-4246



HILLSTONE

Hillstone.com
215 S Orlando Ave
(407) 740-4005



HILLSTONE

SERVING
WINTER PARK
WITH PRIDE
AND GOOD FOOD
SINCE 1996





Photo: Abby Lige

CURRENT

Current reshapes the typical shopping experience by creating a true lifestyle boutique that is both exciting and comfortable for our visitors. Our devotion to fashion coexists within a selection of luxury men's designer collections; we strive to carry well-constructed fashions from the most prominent and latest designers. We provide our clients the highest level of service in style assessment, alterations, personal shopping, and special ordering.

current
BY JOHN CRAIG

CurrentMen.com
128 Park Ave S
(407) 628-1087



JohnCraigClothier.com
132 Park Ave S
(407) 629-7944

JOHN CRAIG

In 1996, the first John Craig retail location opened on Park Avenue with the goal of offering the best selection of high-end men's clothing, accessories, and footwear. Our mission is to provide timeless menswear for the sophisticated man along with individualized and unparalleled service. The Winter Park store continues to achieve industry-wide recognition on The Esquire Retail 100, a prestigious list recognizing America's finest menswear specialty stores.

The Collection BRIDAL



STYLING FLORIDA'S MOST FASHIONABLE BRIDES FOR 38 YEARS!

Like us on Facebook. Follow us on Instagram. Explore our website at www.thecollectionbridal.com.
407.740.6003 301 North Park Avenue Winter Park FL 32789.



DEAR JANE BOUTIQUE

Winter Park's *dear jane* is here to bring you the ultimate shopping experience. Located on the north end of Park Avenue, this trendy boutique offers the ultimate in feel-good shopping, from high-end exclusives to everyday collections of apparel, jewelry, gifts, loungewear, and bath splurges for you and yours. *dear jane* is more than just a store — it's an unforgettable experience in a chic and trendy space.

dear jane
FOR YOU AND YOURS

DearJaneWinterPark.com
329 Park Ave N, #105
(407) 951-8890





RIEKER SHOES

Rieker Shoes was founded in 1874 in Germany and is proud to open its first U.S. flagship retail boutique in beautiful Winter Park. Rieker, along with Remonte, provides style, quality and comfort right out of the box. We feature women's and men's shoes, boots, sandals, socks, and handbags for those who want both fashion and comfort.

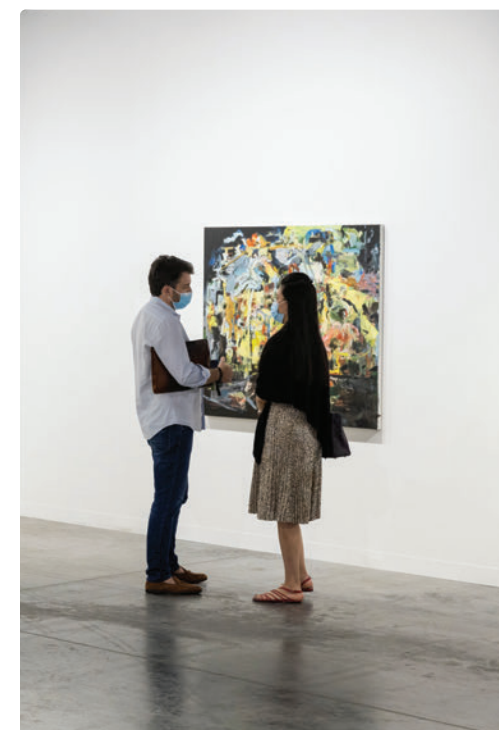
108 E Canton Ave
(407) 539-0425





ART COLLECTING 101

BUILDING A PERSONAL ART COLLECTION CAN PROVE ONE OF LIFE'S MOST ENRICHING PURSUITS, AN OPPORTUNITY TO EXPRESS YOUR PERSONALITY AND VALUES WHILE SUPPORTING CULTURE AND FILLING YOUR LIFE WITH BEAUTY. HERE ARE A FEW TIPS TO GET STARTED.





LOOK

See as much art as possible. Visit galleries and museums where you live and travel. Notice the art in other people's homes. Take it all in to begin training your eye to recognize the difference in mediums as well as the difference between an original work of art and a print.

LEARN

Educate yourself about art via all kinds of channels — from YouTube and podcasts to museum exhibitions and galleries. And learn the lingo: realism, impressionism, abstraction. You don't need to be able

to do a TED Talk on art history, but the deeper your understanding of art, the greater your appreciation and more certain you can be of acquisitions.

LIKE

Buy only what you like. A successful art purchase is one that you live with for decades and enjoy daily. Pursuing art to "flip" it for profit typically leads to disappointment.

FOCUS

The best collections have focus. Living artists. Florida artists. Women artists.

Latinx artists. Sculpture, ceramics, quilts. There's nothing wrong with mixing and matching, but identifying what you're most passionate about will give your collection — and you — greater purpose.

BUDGET

Buy the best you can afford. Fewer choice pieces are always better than more numerous inferior objects. Your collection will take years to build, so don't rush it. Be disciplined. Don't risk your personal financial position stretching to buy art. Losing sleep over credit-card bills takes the joy out of collecting in a hurry.

COUPLES COLLECTING DO'S & DON'TS

Starting an art collection as a couple can be a surprising source of joy in a marriage. Each piece represents a wonderful memory, a moment of discovery, the story of the artist or the gallery where you found it. Even if you don't have similar styles, art collecting can still be an enjoyable shared passion.

DO remember there's no rule that you must share your partner's taste in art.

DON'T attack the other's preferences. Instead, strike up a supportive, spirited dialogue that will deepen your art appreciation by making you consider more carefully what you want to buy.

DO mix and match your personal favorites. Quality recognizes quality, and what seems so different may work interestingly in combination.

DO stay open-minded. If you look long enough, you will find pieces to agree on, and much of the joy in collecting comes from the search and spending time together.

DON'T fret if at the end of the day, you simply can't see eye to eye. You can always divvy up the rooms.





Christina Skinner, Denise Autorino, Isabella Casto, and Tony Tihoni

PARK AVENUE CONTEMPORARY ART

FEATURING OVER
25 LOCAL AND
REGIONAL ARTISTS
AND ROTATING ARTISTS
FROM AROUND
THE COUNTRY



CLOCKWISE FROM ABOVE LEFT *White Ripples*, Barbara Sorensen; *Dancing Dog*, Doug Powell; *Go Gators*, Manon Sander; *Peacock Dances in Red*, Sally C. Evans; Collection of paintings, Victor Bokas; *Magic Time*, Randy Noble; *Mustang Dreams*, Mindy Z. Colton **OPPOSITE** Featuring artists Sandro Pelicić, Aurelio Posada and Alma Ramirez.



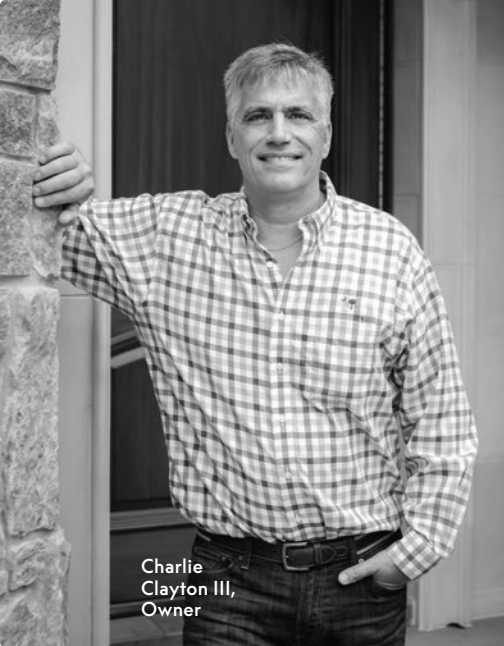
Park Avenue Contemporary Art offers locals and visitors alike the opportunity to purchase original artwork year-round. Contemporary art is especially important, as it is produced by the artists living in our time, allowing us to reflect on society and spark cultural dialogues.

Step into the gallery and experience color pops in all shapes and sizes in a range of mediums — from sculpture and watercolor to tactile, interactive pieces. Adorning the space are pop icons like Marilyn Monroe and Elon Musk along with Barbara Sorensen's *Goddess* series and unique wall sculptures *White Ripples* and *Billows*, which will be on view in September at the Rollins Museum of Art. Pieces from these collections are exclusively available at the gallery for purchase.

Open every day, Park Avenue Contemporary Art offers a team of art consultants and professional installers who make it fun and easy to add to your art collection and start a new one.



ParkAvenueContemporaryArt.com
348 Park Ave S
(407) 233-7305



Charlie Clayton III, Owner



CHARLES CLAYTON CONSTRUCTION

Charles Clayton Construction, Central Florida's premier custom homebuilder, specializes in one-of-a-kind new construction and home remodels while remaining committed to quality craftsmanship, community and family. A Winter Park resident, Charlie Clayton III and his family have been building homes throughout Winter Park, Central Florida, and coastal Volusia for nearly 70 years. Please call us at (407) 628-3334 today to schedule a complimentary review of your upcoming project.



CharlesClayton.com
2250 Lee Rd, Suite 120
(407) 628-3334



PASSPORT WINTER PARK

ROLLINS MUSEUM OF ART

The area's premier teaching museum features rotating exhibitions, ongoing programs, and an extensive permanent collection with works also on view at The Alford Inn at Rollins. Free admission for 2022 courtesy of the museum's RMA Members.



EXHIBITIONS

SUMMER 2022

MAY 21 – SEPT 4, 2022

**Boundaries & Frontiers
Pathways 2022: The
Carlos Malamud Prize**

**What's New? Recent
Acquisitions**

**Trauma to Triumphs:
Perceptions of the
Human Body**

Subject: Artist

FALL 2022

SEPT 17 – DEC 31, 2022

**Modernisms: Iranian, Turkish,
and Indian Art, 1960s-1970s**

Barbara Sorensen: Billows

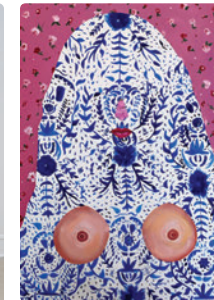
**What's New? Recent
Acquisitions**



UCF ART GALLERY
UNIVERSITY OF CENTRAL FLORIDA



@rollinsmuseum
1000 Holt Ave, Box 2765
(on Rollins campus)
(407) 646-2526



OPPOSITE TOP LEFT Nevzat Akoral (Turkish), *Porters*, n.d., woodcut on paper, 27¾ x 19½ in. Grey Art Gallery, New York University Art Collection, Gift of Abby Weed Grey, G1975.271 **OPPOSITE TOP RIGHT** Raphael Soyer (American, b. Russia, 1899-1987), *Self Portrait*, 1980, color lithograph, 22 x 16 in. Gift of Mr. Eugene Ivan Schuster. 1991.23.18 Reproduced with permission of Estate of Raphael Soyer. **OPPOSITE BOTTOM** Robert Freeman (American, b. 1946), *Marco Polo*, 2021, oil on canvas, 88½ x 70½ in. The Alford Collection of Contemporary Art at Rollins College, Gift of Barbara '68 and Theodore '68 Alford. 2021.112 © Robert Freeman **ABOVE TOP** Barbara Sorensen (American, b. 1945), *Billows* (detail), 2022, aluminum, 28 x 17½ x 4 ft. Collection of the Artist **ABOVE FROM BOTTOM LEFT** Eugene Ofori Agyei (Ghanaian, b. 1993), *Adornment*, 2021, clay, fabrics, paint, 15 x 7 in., Courtesy of the artist. Aimee Jones (American, b. 1992), *Virgin Whore*, 2021, oil on canvas, 30 x 24 in. Courtesy of the artist. Eric Ondina (American, b. 1988), *Mr. Cagnos Guest Speaker 1*, 2021, egg tempera emulsion on canvas, 30 x 24 in. Courtesy of the artist. Channing Gray (American, b. 1994), *Finding Atlas*, 2021, color pencil, watercolor, and ink on sanded plywood, 17 x 12 in. Courtesy of the artist. April Webb (American, b. 1988), *Fe Mini Start*, 2021, dryer lint, wax, spool organizer, embroidery floss, 12 x 12 x 12 in. Courtesy of the artist. Ivan Riascos (American, b. 1966), *The Odd I See #4*, 2020, collage, 23¾ x 49 1/16 in. Courtesy of the artist.



TOP ART SHOWS AROUND FLORIDA

Often overlooked among the beaches and theme parks are Florida's rich arts and cultural offerings. Miami is a global contemporary-art hot spot while Orlando and Tampa-St. Pete are making huge strides toward becoming national destinations for art lovers. Across the state this summer, a variety of exceptional exhibitions in every taste and style are on view waiting to be enjoyed.

Jean-Michel Basquiat's most celebrated cohort in the 1980s New York street art scene was Keith Haring, who, like Basquiat, died tragically young. The **NSU Art Museum Fort Lauderdale** provides an unusual look at Haring's output and influences. *Through October 2, 2022*

The **Museum of Fine Arts St. Petersburg** welcomes Bahamian artist Gio Swaby for her first solo exhibition. Swaby's work explores the intersections of Blackness and womanhood through portraiture and a range of textile-based techniques. *May 28–Oct 9, 2022*

If photography is your thing, **James Museum of Western & Wildlife Art** pairs stunningly beautiful landscapes from Ansel Adams and Florida artist Clyde Butcher. *Apr 9–July 31, 2022*

Exemplifying the diversity of arts experiences in Florida is Jacksonville's **Cummer Museum of Art & Gardens**, where an exhibition of masterpieces from across Asia collected by John D. Rockefeller III and his wife, Blanchette, is sure to impress. *Jun 25–Sept 18, 2022*



FROM OPPOSITE *New Growth 2*, Gio Swaby; *Sand Dunes*, Ansel Adams; *Sand Dunes I*, Clyde Butcher; *Poids Plume*, Pierre Alechinsky; *Gyalavantin'*, Gio Swaby; *Untitled*, Keith Haring; *Head of Buddha*, Rockefeller Collection.



MENNELLO MUSEUM
OF AMERICAN ART



Loch Haven Cultural Park
900 E Princeton St
(407) 246-4278

EXHIBITIONS

Contemporary Expressions
from Flying Horse Editions
THROUGH MAY 30, 2022

An Irresistible Urge
to Create: The Monroe
Family Collection of
Florida Outsider Artists
JUN 10–OCT 16, 2022

Earl Cunningham
ONGOING

American Impressionism
ONGOING

MENNELLO MUSEUM OF AMERICAN ART

The Mennello Museum of American Art enriches the public through exhibitions, education, programs, and publications that celebrate the diversity of American art. Through May 30, the museum presents contemporary artist prints from UCF's Flying Horse Editions. Opening June 10 is *An Irresistible Urge to Create: The Monroe Family Collection of Florida Outsider Art*. On view from the permanent collection is the work of folk artist Earl Cunningham and American Impressionism paintings.



ABOVE Jack "Mr. B" Beverland, *Untitled*, n.d., paints on board. Courtesy of the Monroe Family Collection ABOVE TOP Earl Cunningham, *View from the Widow's Walk*, c. 1955, oil on fiberboard. Collection of the Mennello Museum of American Art. Gift of the Honorable Marilyn Logsdon Mennello and Michael A. Mennello TOP LEFT Lilla Cabot Perry, *The Japanese Children*, 1900, oil on canvas. Courtesy of the Michael A. and the Honorable Marilyn Logsdon Mennello Foundation BOTTOM LEFT Inka Essenhigh, *Dark Pine*, 2017, five-color screenprint on Lana Lanaquarelle satine, edition: 29/40. City of Orlando Public Art Collection. ©Inka Essenhigh.



PHIL KEAN DESIGN GROUP

ARCHITECTURE • CONSTRUCTION
INTERIOR DESIGN • KITCHEN REMODELS

Dedicated to service and excellence, our mission is to provide the complete solution for award-winning design and construction of architecturally distinctive spaces integrating the finest quality of products and services. Whether your tastes are modern or traditional, Phil Kean Design Group specializes in creating one-of-a-kind, luxury residences with extraordinary attention to design detail, sustainable construction, and seamless transitions of indoor and outdoor spaces.

Architecture by Phil Kean, LLC AA26002050 Phil Kean Designs, Inc. CRC1327855; PKD Studio, LLC ID6290



PhilKeanDesigns.com
912 W Fairbanks Ave
(407) 599-3922

IN FOCUS

PHOTOGRAPHER
MERRELL BUILDER
THOMPSON'S
FASCINATION WITH
NATURE STARTED AS A
CHILD GROWING UP IN
WINTER PARK. NOW
HER BREATHTAKING
PHOTOS ARE CAPTURING
MOMENTS FROM EVERY
CORNER OF THE WORLD.



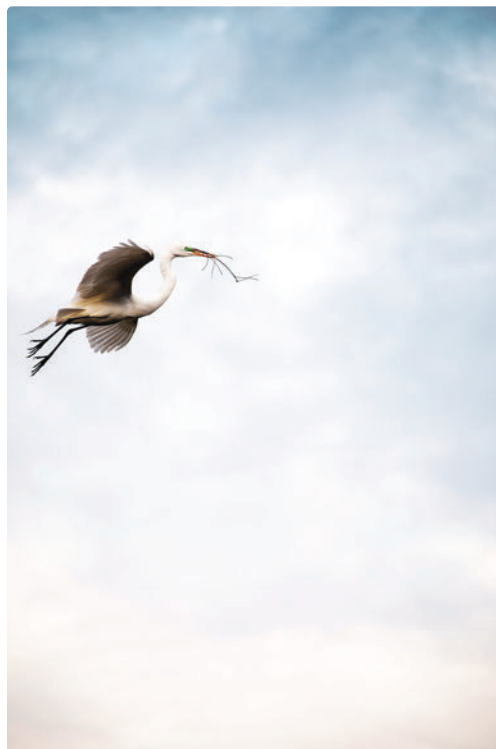
ABOVE *Blue Ridge Mountains, Franklin, NC, 2020* LEFT *Harris Hawk, Sylva, NC, 2020*

Whether it's an Icelandic sheep in a field of grass or a sleeping vampire bird in the Galapagos Islands, Merrell Builder Thompson looks through her lens not as a person or a photographer but as one with the species that has caught her eye. It's this uncanny ability to connect with wildlife and with nature in general that has propelled this Winter Park native into a class all her own. With a camera in hand or a drone overhead, Builder Thompson brings new meaning to the phrase "stolen moment" as she captures the contours of our planet's

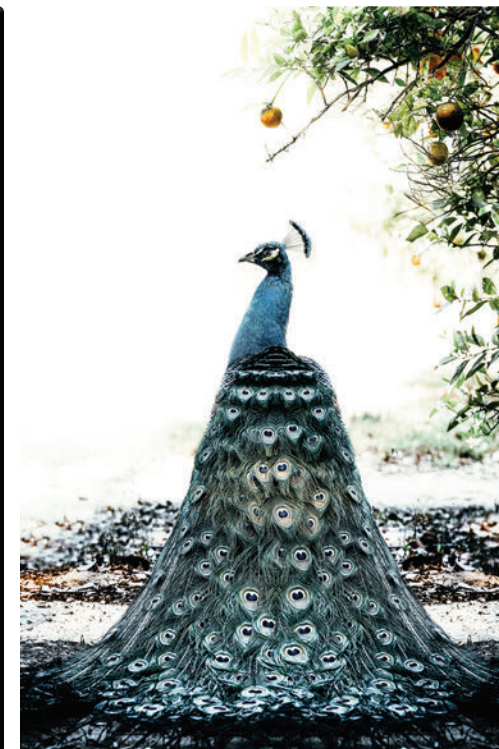
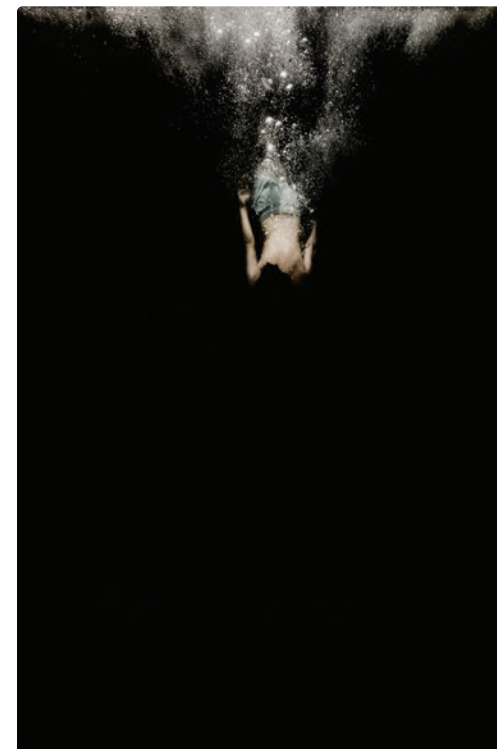
most captivating sights and scenes. We recently sat down with this spirited talent to talk about her skill behind the camera, the inspiration she found growing up in Winter Park, and what's in store for the future.

Q How did you get interested in photography?

A "I've always loved traveling. On family vacations over the last several years, I started experimenting with technology like the drone and the Adobe Suite and realized that the technical stuff comes really naturally to me. If you know what you're doing with the drone, it really becomes a trip in the sky."



FROM LEFT Egret Nesting, Winter Park, FL, 2022; Huckleberry, Franklin, NC, 2020
BELOW Missed Bouy, Lake Virginia, Winter Park, 1987



FROM LEFT Deep Dive, Atlanta, GA, 2021; Peacock Paper, Winter Park, FL, 2022

Q What makes you and your work different?

A "I'm an outdoor person and super into fitness and hiking, so oftentimes I can get to places a lot of other people can't with my professional gear. On a trip to Switzerland, I hiked five hours up The Matterhorn in the Alps and flew the first edition of the DJI drone. It was one of the most beautiful things I've ever seen."



Q It sounds like that was a pivotal moment. What came next?

A "I really started getting into the different technical capabilities of the camera and different types of photography. I started shooting wildlife in Cashiers, North Carolina, and honing my focus. I want the viewer to see one thing — whether it's an owl or a church. I want you to see exactly what I saw at that moment. I use a lot of negative space to eliminate distractions so that what's left is the striking purity of that single subject."

Q How did growing up in Winter Park and spending summers in Cashiers like so many other locals influence you?

A "I lived on Lake Osceola and was always surrounded by water and wildlife. I loved swimming and sailing

and exploring Kraft Azalea Park, and growing up hiking in Cashiers gave me such a comfort level with being outdoors. I'm sure that's where my passion for nature comes from."

Q When you visit Winter Park now, how is it different?

A "Now I bring my photographer's eye. I'm so excited to shoot a SpaceX launch in a way that doesn't look like a postcard and fly my drone over Lake Maitland at sunrise. I also want to photograph the roseate spoonbill, a bright-pink wading bird that's common on the coast."

Q Speaking of the coast, you're getting more into underwater photography. Tell us a little more about that.

A "I love mixing up my vantage point.

Recently, I've taken a few abstract portraits of children jumping in the pool where I focus just on the child and the bubbles of the water — it's like they're floating. I'm excited to try a similar approach at one of the canals on the Winter Park Chain of Lakes."

Q You do a lot of commission work. What's the process?

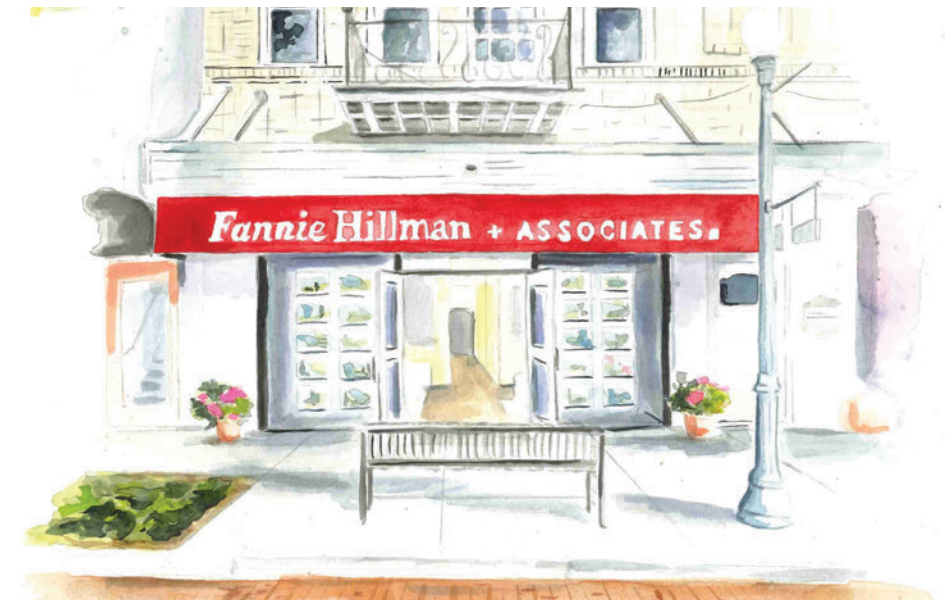
A "I really nestle in and listen to people. I look at their home, their color palette, how they dress. I marinate in all of that and then create something poignant and personal that both reflects who they are and who I am as an artist."

PHOTOGRAPHS NOW AVAILABLE FOR PURCHASE
AT PARK AVENUE CONTEMPORARY ART.



Winter Park's Real Estate Experts

— FOR OVER 41 YEARS —



WELCOME
home

Founded in 1981 by Fannie Hillman, this independent, full-service residential real estate agency has served the community with integrity and quality customer service for over 41 years. **Fannie Hillman + Associates** is a trusted neighbor whose staff of licensed brokers and sales associates are actively involved in the local community.

Fannie Hillman + ASSOCIATES

205 W Fairbanks Ave • 122 S Park Ave • Winter Park, FL 32789
407.644.1234 • www.fanniehillman.com

Fannie Hillman
+ ASSOCIATES

CURATED CREATIONS

THE TEAM AT STEELE STREET STUDIOS IN DOWNTOWN ORLANDO CURATES CUSTOMIZED ART PACKAGES TO SUIT EVERY TASTE AND STYLE.

In addition to a full suite of home design services, Blair Kersenbrock, principal at Steele Street Studios in downtown Orlando, and her team offer customizable art packages for the home that will transform your space. We recently caught up with the design guru to learn more about what's involved in the process and how she can make all your interior dreams come true.

Q What inspired the idea to offer art packages?

A "We create homes from a full design standpoint. We create the look from the very beginning stages to the last layer of the accessories. We like to look at the entire space and make sure that an art collection is curated to reflect the client's personality."



"We look at the entire space and make sure that an art collection is curated to reflect the client's personality."

Q What kind of art do you typically source?

A "We like to make sure there is a variety of mediums like paintings, sculptures, photography, and mixed media. When we look at the entire space as a whole, we can make sure that the artwork really feels like a collection rather than the acquisition of one piece at a time. That said, we can provide one piece at a time, but we will also consider the other pieces a client may have to find the perfect piece for a room or space."

Q What are the benefits to the client?

A "Clients often have a hard time visualizing how things will come together. They trust our professional opinion to design the space in a way that they might not have thought of. When you put a modern painting in a traditional space or a color-block painting in a saturated room, something special happens. Art is a wonderful way to make sure the client's personality shines through while being a very important part of the design."

Q Why sets Steele Street apart?

A "We are a boutique high-end design firm. We take the time to make sure that each project is different and special for our clients. No two projects are alike. We also specialize in interior architectural details that really layer a home and make it feel elevated." SteeleStreetStudios.com

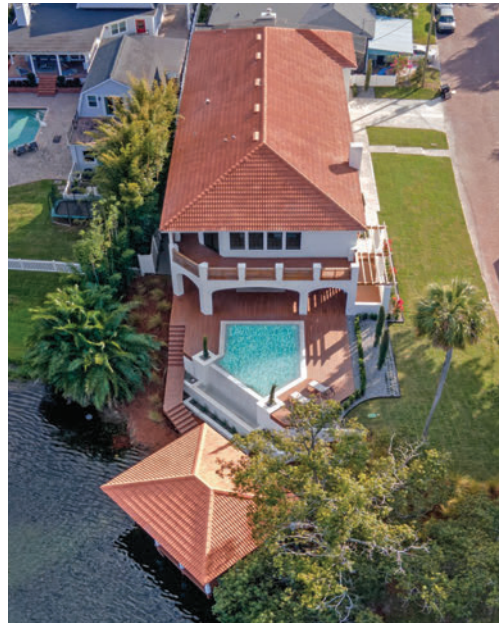


COMPASS

High demand for
High-end homes.

Leverage interest in properties like yours,
with the #1 Brokerage in the US.

(sales by volume)



Brian Rotenberger, Broker Associate

Direct Cell: 407-948-8478

Email: brian.rotenberger@compass.com

Steven Luppert, Real Estate Advisor

Direct Cell: 407-484-9178

Email: steven.luppert@compass.com

Visit our webpage by scanning the QR code below:



OrlandoWatchCo.com

329 Park Ave N, Ste 103

(407) 975-9137

**HOURS OF
OPERATION**

TUESDAY - SATURDAY

10 AM - 5:30 PM



Scott D. Heisler, Owner/Watchmaker;
Carissa Dixon, VP Operations

ORLANDO WATCH COMPANY



Orlando Watch Company is a family-owned-and-operated store located along beautiful Park Avenue, offering the finest selection of luxury timepieces and expert watch repair by certified trained watchmakers. We are authorized retailers for fine brands such as Grand Seiko, Bell & Ross, Oris, Longines and more. We also offer a large collection of curated luxury pre-owned and vintage timepieces like Rolex, Patek Philippe, Audemars Piguet, Cartier, Omega and other fine Swiss watch brands. Welcome to our world of horology.

Compass is a licensed real estate broker, licensed to do business as Compass RE in Delaware, Idaho, New Jersey, Pennsylvania and Tennessee, Compass Realty Group in Kansas and Missouri, Compass South Carolina, LLC in South Carolina, and Compass Real Estate in Washington, DC, Idaho and Wyoming and abides by Equal Housing Opportunity laws.

COMPASS



THE BAGBY TEAM

YOUR LAKEFRONT
LIFESTYLE BEGINS
WITH US

Named Top Producing Team at Fannie Hillman for 35 years, The Bagby Team brings integrity, competence, and generations of experience to both sides of the negotiating table. Whether you're moving in, moving out, moving up, or moving down, this family of realtors — whose track record includes over \$917 million in lifetime sales and \$22-plus million in lakefront sales since 2020 — knows life moves fast and embraces both the business and human sides of real estate.



THE BAGBY TEAM
A Family of Realtors

Fannie Hillman
+ ASSOCIATES

BagbyTeam@FannieHillman.com
122 Park Ave S • 205 W Fairbanks Ave
(407) 620-8868



Julie Bagby Williams,
Nancy Bagby and SueAnn Rand



KBFDesignGallery.com
1295 S Orlando Ave
Maitland
(407) 830-7703



KBF DESIGN GALLERY

Brother-and-sister duo Adam Vellequette and Ashley Sheaffer lead the professional design-to-build team at KBF Design Gallery. Recently named the Best Remodeling Firm and Best General Contractor in Central Florida, KBF is committed to the highest standards in design, craftsmanship and client care. Visit their award-winning showroom in the heart of Maitland, where you'll find over 4,500 square feet of home design inspiration and where your initial consultation is always complimentary.



Adam Vellequette and Ashley Sheaffer



Carlos Forato, Owner



FURNITURE-KITCHEN-CLOSET CUSTOM MILLWORK



SACCARO DESIGN HABITAT



saccaro®

Tradition is our territory. For almost 70 years we have been creating timeless furniture of the highest quality produced by our most valuable tool: human hands. Our 4,000-square-foot Winter Park showroom features a selection of Saccaro's signature indoor and outdoor collections. Raw materials, cutting-edge technology, and artisanal craftsmanship combine in each piece of Saccaro furniture to create distinctive, exclusive designs. Our partnership with Appenin has given our clients the opportunity to combine a vast selection of furniture with custom millwork for their homes.



Saccaro-Orlando.com
@saccaroorlando
@appeninwinterpark
499 W Fairbanks Ave
(407) 335-4441





PARK PLAZA HOTEL

The Park Plaza Hotel is an intimate boutique hotel built in 1922 and famous for its romantic atmosphere, personal service and genuine hospitality. The hotel lobby oozes vintage elegance, and cozy, one-of-a-kind rooms offer views overlooking historic Park Avenue and the Central Park Rose Garden. Many of the rooms feature elegant balcony gardens where guests can enjoy their complimentary continental breakfast. Whether you're visiting for a few days or settling in for a longer stay, our full-service hotel promises you a friendly and relaxing home away from home.



Park Plaza
HOTEL

ParkPlazaHotel.com
307 Park Ave S
(407) 647-1072



KELLER WILLIAMS LUXURY WINTER PARK

Professionalism, experience, and knowledge set Keller Williams Luxury Winter Park agents apart. We are the luxury division of Keller Williams Realty, the largest and most productive real estate company in the world. Award-winning agents provide concierge experience for their clients while bringing them the marketing power of the world's largest real estate company. We are your luxury agents.



KELLERWILLIAMS
Luxury
WINTER PARK
kw WINTER PARK
KELLERWILLIAMS, REALTY

LuxuryWinterPark.com
147 W Lyman Ave
(407) 545-6430

PASSPORT WINTER PARK



Dr. Mitesh Jivan, DMD, MPH

ADVANCED PARK DENTAL

Dr. Mitesh Jivan is passionate about maximizing your smile's potential. Advanced training allows Dr. Jivan to perform all dental procedures virtually from his boutique Park Avenue office — from cutting-edge dental surgeries (implants/micro-veneers) to routine dental cleanings. The latest modern technology, comfort amenities, and an individualized, patient-focused philosophy create a truly unique experience for the whole family. Dr. Jivan's expertise is in maintaining and constructing natural, untouched-looking smiles.



AdvancedParkDental.com
329 N Park Ave, #360
(Above Panera Bread)
(407) 628-0200



WINTER PARK SCENIC BOAT TOUR



ScenicBoatTours.com
312 E Morse Blvd
(407) 644-4056

Discover Winter Park by water. Board a comfortable pontoon boat for a narrated tour of the city's waterfront, cruising through scenic canals lush with local flora and fauna and lakes graced by grand estates and historic landmarks such as Rollins College, Kraft Azalea Gardens, and the Isle of Sicily. Boats depart each hour from 10 a.m. to 4 p.m. daily.



CARPET SOURCE SHOWROOM



Started as a family business over 40 years ago, Carpet Source has grown into a world-class supplier of the finest rugs, hardwood floors, and carpets to top interior designers, architects, and discerning clients across the United States and around the world. What makes us proudest, however, are the principles and high standards that we bring to each and every project: honesty, integrity, and service. These are our family values and our business values — we look forward to earning your trust. Call the showroom to schedule an appointment.



CarpetSource.com
505 N Virginia Ave
(407) 539-2982

At Bell Bank Mortgage, our purpose is to *help others.*

That means putting *your* best interests first – always – with:

- Highly competitive rates
- Wide variety of loan programs
- Award-winning service
- On-time closings

Every step of your financing is handled at Bell Bank Mortgage. Our in-house processes mean faster answers, fewer headaches and peace of mind.

Bell isn't like other mortgage firms – or banks. As an independently owned bank, we're able to do things differently. That means treating our customers how we want to be treated and putting people over profits.

Your loan is not just another deal to us. It's a dream of homeownership or the realization of a refinance.

Let us help guide you *home.*



RICHIE SLOAN

Senior Mortgage Banker
407.810.2475 MOBILE

www.richiesloan.biz
rsloan@bell.bank

243 W. Park Avenue | Suite 200
Winter Park, FL 32789

NMLS: #60032

**Bell Bank
Mortgage**

bellbankmortgage.com



**KELLY PRICE
& COMPANY**

KellyPriceand
Company.com
243 W Park Ave
(407) 415-0338



THE ART OF REAL ESTATE

LOU SUPOWITZ • TOP 10 PRODUCER

Living in Winter Park for over 25 years, Lou Supowitz has a distinguished record of public service to Central Florida through his involvement with philanthropic foundations and commitment to arts and culture. Orlando Mayor Glenda Hood honored him as the recipient of the Vision Award for Innovation. Lou's experience on both sides of real estate transactions makes the process seamless for all parties, while his unwavering work ethic and previous career in television and marketing set him apart.



PRIVÉ SALON & SPA



Known for our award-winning team of cut and color specialists, Privé has been delivering a world-class customer service experience through honest communication, teamwork, and accountability for more than a decade. You'll leave Privé with newfound confidence because our team of talented stylists executes each haircut, color, and style with personalized precision, unlocking the most beautiful version of yourself. At our Winter Park location, guests can indulge in Spa Privé, a spa room dedicated to providing the best skin-care treatments using the latest trends in technology.

PRIVÉ
SALON & SPA

PriveSalonOrlando.com
 @Privesalon_Orlando
 155 E New England Ave, #102
 (407) 355-9229



UPCOMING SIGNATURE EVENTS

Legislative Update
MAY 18, 2022

Political Mingle
JUN 28, 2022

**Soirée: A Summer
Happening**
JUL 21, 2022

Winter Park Outlook
SEPT 23, 2022

**Winter Park Autumn
Art Festival**
OCT 8-9, 2022

Best of Winter Park
NOV 3, 2022

WINTER PARK CHAMBER OF COMMERCE

The mission of the Winter Park Chamber of Commerce is to convene people and ideas for the benefit of our businesses and community. Consider the perks of membership, which include digital marketing support and networking opportunities. Plan to attend one or all of our more than 100 programs and events each year, from *Soirée: A Summer Happening* to the *Autumn Art Festival* to the *Best of Winter Park*. Our recurring monthly programs include *Winter Park Professional Women*, *Good Morning Winter Park*, and *Connections*.



WINTER PARK
CHAMBER OF COMMERCE

WinterPark.org
 151 W Lyman Ave
 (407) 644-8281



ANTHROS INC.

Headquartered in Downtown Winter Park, Anthros Inc. is a human resources firm with local, national and international clients. Our clients are leaders in their industries. Chef-owners nominated for James Beard Awards. Law firms known for winning landmark cases. Health-care facilities that set the standard for care while operating across multiple states. Our vision is to empower our clients to become the best in their industry and build a legacy by serving as their long-term partner in human resources.



AnthrosInc.com
400 W Morse Blvd, #203
(407) 502-0200



Anurag Dandiya, Founder

AN INSIDER'S GUIDE TO WATCHING A ROCKET LAUNCH



From countdown to liftoff, watching a rocket launch is perhaps one of the most otherworldly experiences you can have on Earth. And from Winter Park, this riveting experience is just an hour's drive away. Here are a few insider tips on how to make the most of your launch-viewing experience and ensure that it's one you'll not soon forget.

There's more than one spot to watch a launch. While the Kennedy Space Center Visitor Complex is the obvious choice, several other lesser-known locations offer equally spectacular sightlines. Check out Playalinda Beach, just six miles north of the launch pad, Rotary Riverfront Park on the Indian River Lagoon, or the Exploration Tower in Port Canaveral, where an outdoor observation deck is outfitted with telescopes. For a more adrenaline-pumping experience, hop in a helicopter, kayak, or boat.

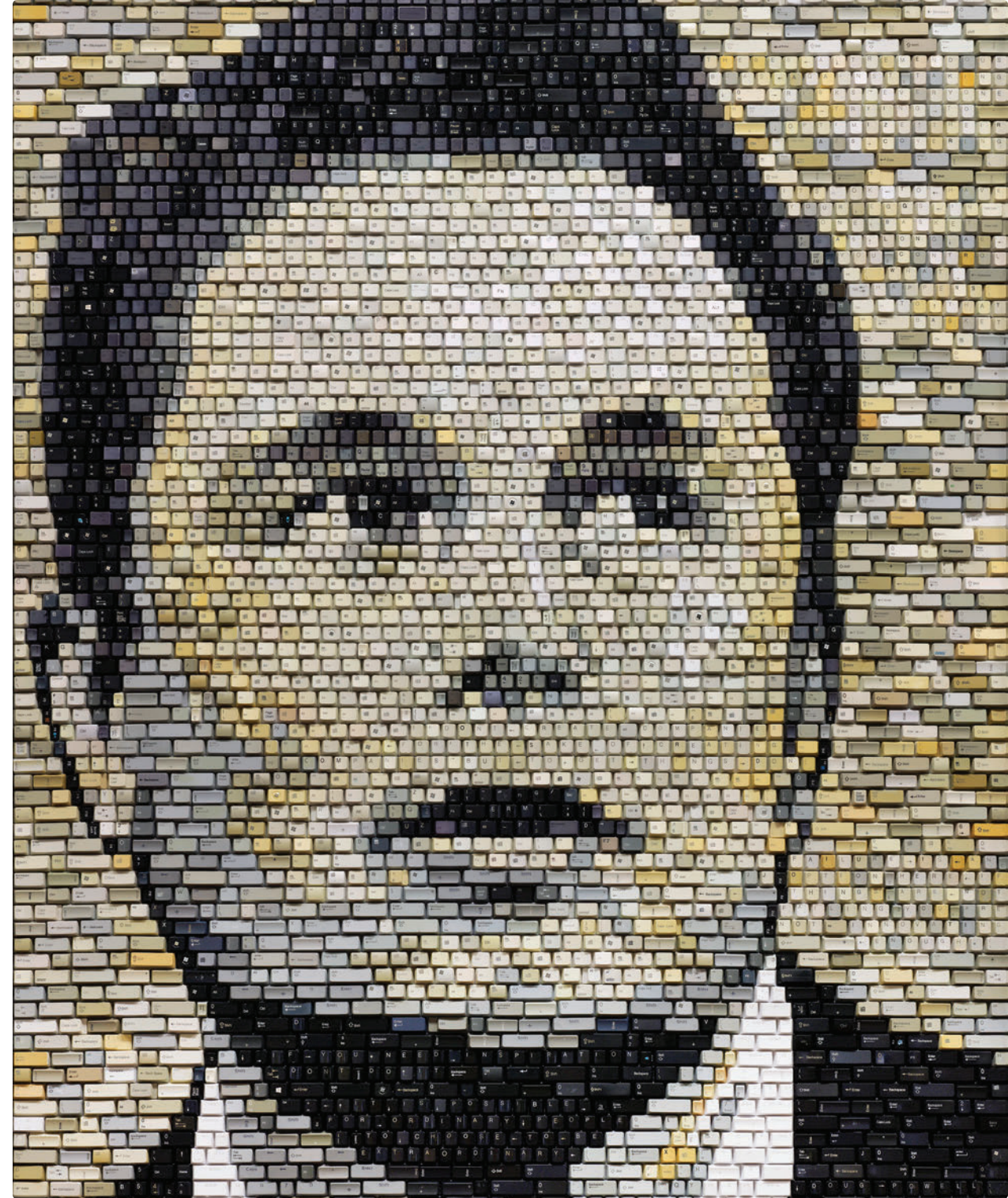
Always check the weather. What seems like a perfect day for a launch can turn into a 75 percent chance of scattered showers in a matter of an hour. Get updates through the launch provider, like SpaceX, as they monitor nuances like upper-level winds that can scrub or delay the launch, which takes us to our next tip.

Prepare for a delayed or scrubbed launch. Many factors go into safe launches, so when a launch is cancelled, don't be disappointed. If you choose a location that charges a fee, you'll typically get a refund. If you're visiting from out of town, be sure to schedule a few extra days on the Space Coast to allow for potential reschedules.

There's no such thing as arriving too early, especially if you're planning to use one of the most popular locations. Allow time for parking, entering the complex, and security bag searches. Some die-hard devotees even camp out the night before if the launch is early enough.

Plan your meals. At Kennedy Space Center, you can bring snacks in a soft-sided cooler and water in plastic containers. For Playalinda, pack a picnic and a few outdoor games. Don't feel like bringing food? Restaurants like Shiloh's Steak & Seafood and Dogs R Us offer prime launch-viewing spots.

Stay up to date. Sign up for email notifications at **KennedySpaceCenter.com** to get exclusive info on special offers, launches, news, and events.



BEYOND THE HORIZON Creator of SpaceX. Co-founder of PayPal. CEO of Tesla. Elon Musk is a once-in-a-generation visionary who's revolutionizing transportation technology almost as quickly as his *Falcon Heavy* can launch into space. Artists the world over have captured his likeness, but perhaps none as creatively as Doug Powell, who used the keys of recycled computer keyboards to fashion a portrait of Musk as he gazes confidently into the future. Sold exclusively at **Park Avenue Contemporary Art**, *Elon Musk Visionary* will launch any space in your home or office into a new dimension.

NEXT-LEVEL LUXURY

ON THE PRECIPICE OF BIG CHANGE AND EVEN BIGGER IMPACT, THE ALFOND INN AT ROLLINS IS ENTERING A NEW PHASE OF GROWTH AS IT BREAKS GROUND ON A LONG-AWAITED EXPANSION.



Since opening in 2013, The Alfond Inn at Rollins has been much more than a hotel. It quickly became a community centerpiece and popular destination for dining, celebrating, socializing, and networking while funding millions in scholarships for Rollins College's best and brightest students. To meet the needs of its ever-growing clientele, the inn recently broke ground on a two-year expansion that will solidify its spot as one of the country's best luxury boutique hotels.

"This is an exciting time for The Alfond Inn and for Winter Park as we embark on the much-anticipated next phase of the hotel's evolution," says General Manager Jesse Martinez. "This will allow us to deliver an unprecedented contemporary experience — from our new guest rooms to the additional event space to the new spa — and serve our guests even better as we fulfill our philanthropic goals, which are always at the heart of our mission."

NEW DIGS

With large windows to welcome an abundance of natural light, 71 new guest rooms and suites will feature bright and colorful hues, hardwood floors, and carved white headboards flanked by hanging lights over the sideboard.

ELEVATED EATS

A light-filled lobby cafe will serve coffee, crepes, and light bites and transition to a high-end beer, wine, and dessert bar in the evenings. The

Among the most anticipated amenities will be a new cafe, spa and fitness area, and a second swimming pool.



cafe is designed to be a welcoming open space, adorned with warm wood, midcentury-modern furnishings, high-top communal tables, and inviting private seating areas.

RELAX, RESTORE, REPEAT

Wellness is at the forefront of the expanded hotel, with a new spa that will feature seven treatment rooms, steam and sauna, a new fitness area, and luxury locker rooms. The design is clean and minimalist tempered by a palette of soothing, understated tones.

PARADISE FOUND

The spa will open onto a new amenity deck with a second swimming pool surrounded by private cabanas and a shaded canopy covering an extensive outside living room.

COMMUNITY CONNECTION

The expansion will further cement The Alfond Inn as a prime social hub and top choice for weddings and C-level meetings. A new meeting room and boardroom will provide an additional 2,400 square feet of customizable meeting and event space to accommodate Orlando's ever-growing culture of innovation and growth.

MIND-EXPANDING ART

The public spaces in the new wing will provide blank canvases to display additional artworks from the robust Alfond Collection of Contemporary Art. This collection was born as a visual syllabus for the liberal arts education received by Ted and Barbara Alfond at Rollins College, where they learned values that shaped their lives. TheAlfondInn.com



"THIS EXPANSION WILL ALLOW US TO SERVE OUR GUESTS EVEN BETTER AS WE FULFILL OUR PHILANTHROPIC GOALS, WHICH ARE AT THE HEART OF OUR MISSION."



RUTH HILL YEILDING, MD

Ruth Hill Yeilding, MD, is a double board certified Facial Plastic Surgeon super specialized in eye and face. Dr. Yeilding focuses exclusively on facial and neck rejuvenation. Her surgical specialties include her signature laser eyelid lift, facelifts, and CO2 laser resurfacing. Dr. Yeilding is known for her natural results and treats patients in an extraordinary caring manner, creating a highly positive patient experience.



YeildingMD.com
328 W Morse Blvd
(407) 960-1000





Guiding you Home in Winter Park

Helping my clients achieve their real estate goals – whether through buying, selling or renting – is my top priority. No matter the price range, I work tirelessly to ensure that my clients' dreams come true, one home at a time!

If you're looking for a seamless real estate experience, reach out today to start the process.



Emily Bearden
emily.bearden@compass.com
231.638.1974

COMPASS

Clementine
FINE CHINA • EVERYDAY • GIFTING

271 N Pennsylvania Avenue, Winter Park
(407) 637-5162 ClementineWP.com
@ShopClementineWP
Our Sister Stores: The Grove, Be On Park



BLINK YOUR LASHES
201 W Canton Ave, Suite C
(321) 356-6657
BlinkYourLashes.com

"Orlando is where I got my start! It was an honor to sing at Dr. Phillips Center's new Steinmetz Hall with The Royal Philharmonic Orchestra."

- GRAMMY® AWARD-WINNER **JENNIFER HUDSON**

amazing acoustics are only the beginning

STEINMETZ HALL—THE WORLD'S GREATEST NEW CONCERT HALL.
NOW IN ORLANDO.

JENNIFER HUDSON & THE ROYAL PHILHARMONIC ORCHESTRA
ORLANDO, FLORIDA | DRPHILLIPSCENTER.ORG





SUZANNE NICHOLS DESIGN GROUP

Our award-winning, full-service firm designs luxury residential and commercial projects located nationally and internationally. We transform and create beautiful environments while exceeding our clients' expectations and delivering extraordinary results.



SuzanneNicholsDesignGroup.com
631 W Fairbanks Ave, Suite A & B
(407) 678-9651



RANDY NOBLE FINE ART

After a 22-year career producing character art for Disney, Randy now enjoys working on his fine art paintings. His originals can be found at Park Avenue Contemporary Art Gallery. Please stop in today to view his latest work.



RSNobleFineArts.com
(407) 233-7305



SHOOOZ
303 Park Ave N
(407) 647-0110
ShooozOnParkAve.com



ORCHID THAI
305 Park Ave N
(407) 331-1400
EnjoyOrchidThai.com

TEN THOUSAND VILLAGES

As a pioneer of the global Fair Trade movement, we create opportunities for artisans in developing countries to earn income by bringing their products and stories to market.



TenThousandVillages.com
329 Park Ave N, #102
(407) 644-8464





THE SPICE & TEA EXCHANGE

Over 65 of the world's finest loose-leaf teas. Hundreds of spices and herbs. 85-plus custom spice blends made in-store.



SpiceandTea.com
309 Park Ave N
(407) 647-7423



Linda and Bill Files, Owners



PORTER MCEVER REALTOR

Growing up surfing and fishing in New Smyrna Beach, Porter McEver has turned his love of Florida's natural landscape and beachfront living into a passion for real estate. A local market expert, McEver is ready to put you in your dream home.

Premier | Sotheby's
INTERNATIONAL REALTY
PremierSothebys
Realty.com
114 Canal St
(407) 921-3803



Celebrating 36 years



TUNI
301 Park Ave S
(407) 628-1609
ShopTuni.com



PETERBROOKE
CHOCOLATIER
300 Park Ave S
(407) 644-3200
PeterbrookeWP.com

COCINA 214

Cocina 214 is an award-winning contemporary Mexican and Tex-Mex restaurant featuring authentic, fresh, high-quality fare. The menu combines bold flavors with the freshest local ingredients to create exceptional Tex-Mex served in a vibrant, elegant setting.

COCINA 214
Mexican Kitchen & Bar

Cocina214.com
151 E Welbourne Ave
(407) 790-7997



● APPAREL

- 1 Bebe's & Liz's
311 S Park Ave
- 2 Berri Lynn's
326 N Park Ave
- 3 Charyl
400 S Park Ave
- 4 Current
128 S Park Ave
- 5 Dear Jane
329 N Park Ave
- 6 Forema Boutique
300 N Park Ave
- 7 John Craig Clothier
132 S Park Ave
- 8 Leonardo 5th Avenue
121 E Welbourne Ave
- 9 Lilly Pulitzer
114 N Park Ave
- 10 Lucky Brand Jeans
323 S Park Ave
- 11 Monkee's of Winter Park
444 W New England Ave, Suite 115
- 12 Sara Campbell Ltd
346 N Park Ave
- 13 Siegel's Winter Park
330 S Park Ave
- 14 Synergy
202 S Park Ave
- 15 The Grove
341 N Pennsylvania Ave
- 16 The Impeccable Pig
337 S Park Ave
- 17 Tugboat & The Bird
318 N Park Ave
- 18 Tuni
301 S Park Ave
- 19 Zingara Souls
202 S Park Ave

● BREWERY

- 1 The Winter Park Distillery
1288 N Orange Ave

● BUSINESS SERVICES

- 1 BKHM CPAs
1560 N Orange Ave
- 2 Felder Agency Farmers Insurance
225 W Canton Ave
- 3 Frog
114 S Park Ave
- 4 Larissa Humiston, LCSW
1414 Gay Rd
- 5 Leading Edge Title
243 W Park Ave
- 6 Moss, Krusick and Associates, LLC
501 S New York Ave
- 7 Swann, Hadley, Stump Dietrich & Spears
200 E New England Ave

● COLLEGES

- 1 Full Sail University
3300 University Blvd
- 2 Rollins College
1000 Holt Ave

● DINING

- 1 310 Park South
310 S Park Ave
- 2 4 Rivers Smokehouse
1600 W Fairbanks Ave
- 3 Bernie's CoffeeKitchen
118 S Park Ave
- 4 Black Bean Deli
1346 N Orange Ave
- 5 blu on the avenue
326 S Park Ave
- 6 Chez Vincent
533 W New England Ave

- 7 Cocina 214
151 E Welbourne Ave
- 8 Financier Patisserie
212 N Park Ave
- 9 Garp and Fuss
348 N Park Ave
- 10 Luma on Park
290 S Park Ave
- 11 Orchid Thai Cuisine
305 N Park Ave
- 12 Panera Bread - Park Ave
329 N Park Ave
- 13 Park Avenue Smoothie Cafe
400 S Park Ave
- 14 Power House Cafe
111 E Lyman Ave
- 15 Prato
124 N Park Ave
- 16 Proper & Wild
155 E Morse Blvd
- 17 San Julian's Coffee
110 S Orlando Ave
- 18 Sushi Pop Winter Park
115 E Lyman Ave
- 19 The COOP
610 W Morse Blvd
- 20 The Glass Knife
276 S Orlando Ave
- 21 The Imperial at Washburn Imports Winter Park
170 E Morse Blvd
- 22 The Parkview
136 S Park Ave
- 23 The Wine Room on Park Avenue
270 S Park Ave
- 24 UMI Japanese Restaurant
525 S Park Ave

● HEALTH & BEAUTY

- 1 Advanced Park Dental
329 N Park Ave
- 2 Club Pilates Winter Park
1222 N Orange Ave
- 3 Elevation
214 N Park Ave
- 4 Eyes & Optics
312 N Park Ave
- 5 MassageLuXe Winter Park
2217 Aloma Ave
- 6 Orlando Skin Solutions
470 W New England Ave
- 7 Pristine Nail & Day Spa
327 S Park Ave
- 8 See Eyewear
342 S Park Ave
- 9 Thomas Family & Cosmetic Dentistry
201 N Lakemont Ave

● HOSPITALS

- 1 AdventHealth Winter Park
200 N Lakemont Ave

● HOTELS

- 1 Comfort Suites Downtown
2416 N Orange Ave
- 2 Hilton Garden Inn Winter Park
1345 Lee Rd
- 3 Park Plaza Hotel
307 S Park Ave
- 4 The Alford Inn
300 E New England Ave

● INTERIOR DESIGN

- 1 Ethan Allen
329 N Park Ave

● JEWELRY

- 1 Be On Park
152 S Park Ave
- 2 Jewelers on the Park
116 S Park Ave

- 3 Lauren Sigman Collection
341 N Pennsylvania Ave
- 4 Orlando Watch Company
329 N Park Ave

● MEDIA

- 1 Winter Park Publishing Company, LLC
201 W Canton Ave

● MUSEUMS & CULTURE

- 1 Albin Polasek Museum & Sculpture Gardens
633 Osceola Ave
- 2 Axiom Fine Art
268 W New England Ave
- 3 Bach Festival Society of Winter Park
231 N Interlachen Ave
- 4 Morse Museum of American Art
445 N Park Ave
- 5 Ocean Blue Galleries
202 N Park Ave
- 6 Passport Fine Art Gallery
307 S Park Ave
- 7 Scenic Boat Tour
312 E Morse Blvd
- 8 The Winter Park Playhouse
711 N Orange Ave
- 9 Winter Park History Museum
200 W New England Ave

● REAL ESTATE

- 1 Beyond Commercial *
175 Lookout Pl
- 2 C Brenner Inc
3586 Aloma Ave
- 3 Fannie Hillman & Associates
122 S Park Ave
- 4 Fannie Hillman + Associates
205 W Fairbanks Ave
- 5 Keller Williams Winter Park
147 W Lyman Ave
- 6 Kelly Price & Company
243 W Park Ave
- 7 Owens Realty Services *
1646 33rd St
- 8 Palmano Group Real Estate Brokerage
444 W New England Ave
- 9 Premier Sotheby's International Realty
233 W Park Ave

● RELIGIOUS

- 1 All Saints Church of Winter Park
342 S Park Ave
- 2 San Pedro Spiritual Development Center *
2400 Dike Rd

● SHOES

- 1 Rieker Shoes
108 E Canton Ave
- 2 Shooz On Park Ave
303 N Park Ave

● SPECIALTY

- 1 Brandywine Square
400 N Park Ave
- 2 Christian Science Reading Room
322 N Park Ave
- 3 e-tennis
2145 W Fairbanks Ave
- 4 Follett Bookstore at Rollins College
200 W Fairbanks Ave

- 5 frank
119 E Morse Blvd
- 6 Fred Astaire Dance Studios *
1400 Howell Branch Rd
- 7 My Urban Lodge
444 W New England Ave
- 8 One Florida Bank
531 W Morse Blvd, Suite 100
- 9 Partridge Tree Gift Shop
316 S Park Ave
- 10 Pianta Design
141 Lincoln Ave
- 11 Rifle Paper Co.
558 W New England Ave
- 12 Ten Thousand Villages
329 N Park Ave
- 13 The Seamstress
1143 N Orange Ave
- 14 The Shade Store
204 N Park Ave
- 15 The Spice & Tea Exchange
309 N Park Ave
- 16 The Woman's Club of Winter Park, Inc
419 S Interlachen Ave
- 17 Williams-Sonoma
142 S Park Ave
- 18 Writer's Block Bookstore
316 N Park Ave

● SWEETS

- 1 Gelato-go Orlando
513 S Park Ave
- 2 Kilwins Chocolates & Ice Cream
122 N Park Ave

● TRAVEL

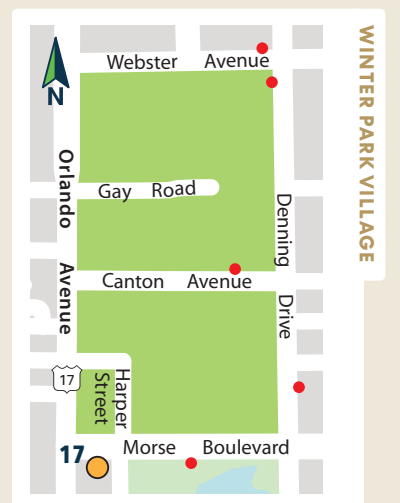
- 1 Luxury Trips
190 E Morse Blvd

● WEDDINGS

- 1 The Collection Bridal
301 N Park Ave

● INSTAGRAMMABLE SPOTS

- 1 AdventHealth
200 N Lakemont Ave
- 2 Casa Feliz
656 N Park Ave
- 3 City Hall
401 S Park Ave
- 4 Cocina 214
151 E Welbourne Ave
- 5 Grenada Court
118 S Park Ave
- 6 Hilton Garden Inn
1275 Lee Road
- 7 Mead Botanical Garden
1300 S Denning Dr
- 8 Morse Museum of American Art
445 N Park Ave
- 9 Rollins College Rose Garden
1000 Holt Ave
- 10 The Alford Inn at Rollins
300 E New England Ave
- 11 The Glass Knife
276 S Orlando Ave
- 12 The Winter Park Distilling Company
1288 N Orange Ave
- 13 Winter Park Chamber of Commerce
151 W Lyman Ave
- 14 Winter Park Farmers' Market
200 W New England Ave
- 15 Winter Park Train Station
148 W Morse Blvd



INDEX

SHOPPING

Be On Park Fine Jewelry	02
Carpet Source	56
Current	14
Dear Jane Boutique	17
John Craig Clothiers	15
Orlando Watch Co.	47
Rieker Shoes	18
Shoooz	74
Ten Thousand Villages	75
The Ancient Olive	08
The Collection Bridal	16
The Spice & Tea Exchange	76
The Wine Room	10
TUNI	76

DINING + DESSERTS

Cocina 214	77
Financier Bistro & Bar à Vin	07
Hillstone	12
Orchid Thai	74
Peterbrooke Chocolatier	76
The Ravenous Pig	09

ART + THINGS TO DO

Dr. Phillips Center for the Performing Arts	73
Park Avenue Contemporary Art	24
Randy Noble, Artist	75
Rollins Museum of Art	30
The Mennello Museum of American Art	34
Winter Park Scenic Boat Tour	55

HOME + REAL ESTATE

Carpet Source	56
Charles Clayton Construction	28
Clementine Fine China	72
Emily Bearden, Compass Realty	72
Fannie Hillman + Associates	42
KBF Design Gallery	49
Keller Williams Luxury Winter Park	53
Lou Supowitz, Kelly Price & Co.	59
Phil Kean Design Group	36
Porter McEver, Premier Sotheby's International Realty	77
Rotenberger and Luppert, Compass Realty	46
Saccaro Design Habitat	50
Suzanne Nichols Design Group	74
The Bagby Team, Fannie Hillman + Associates	48

HOTELS

The Alford Inn	01, 66
Park Plaza Hotel	52

HEALTH, SPA + BEAUTY

Advanced Park Dental	54
Blink Your Lashes	72
Privé Salon	60
Dr. Ruth Yeilding	70

PROFESSIONAL SERVICES

Anthros Inc.	62
Bell Bank Mortgage	58
Full Sail University	81
Winderweedle, Haines, Ward & Woodman, P.A.	11
Winter Park Chamber of Commerce	61

START TODAY: ONLINE OR ON CAMPUS

Flexible learning options available

■ [Learn more at fullsail.edu](https://fullsail.edu)



CAMPUS & ONLINE DEGREE PROGRAMS



Music & Recording



Games



Art & Design



Film & Television



Technology



Media & Communications



Business



Sports



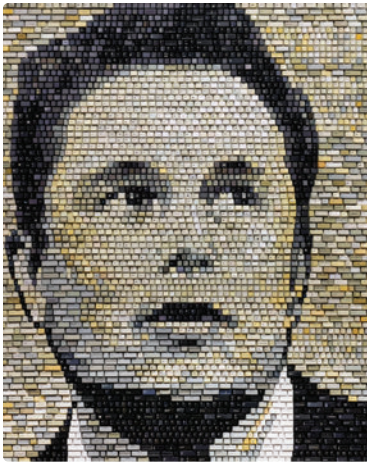
FULL SAIL
UNIVERSITY®

Whether you're attending classes online or on our Florida campus, at Full Sail you'll join a community of people united by the desire to learn through creating. If you've got a dream in entertainment and media, this is the place to make it happen.

3300 University Boulevard • Winter Park, FL

fullsail.edu

Financial aid available for those who qualify • Career development assistance Accredited University, ACCSC
To review consumer disclosures, please visit fullsail.edu/gedt.



Clockwise from top: *Meadow Flowers*, Maria Reyes Jones; *Audrey Bubble Gum*, Oriana Gerez; *Elon Musk Visionary*, Doug Powell

ART GALLERY OPEN DAILY



348 PARK AVE S — WINTER PARK — 407-233-7305

ParkAvenueContemporaryArt.com